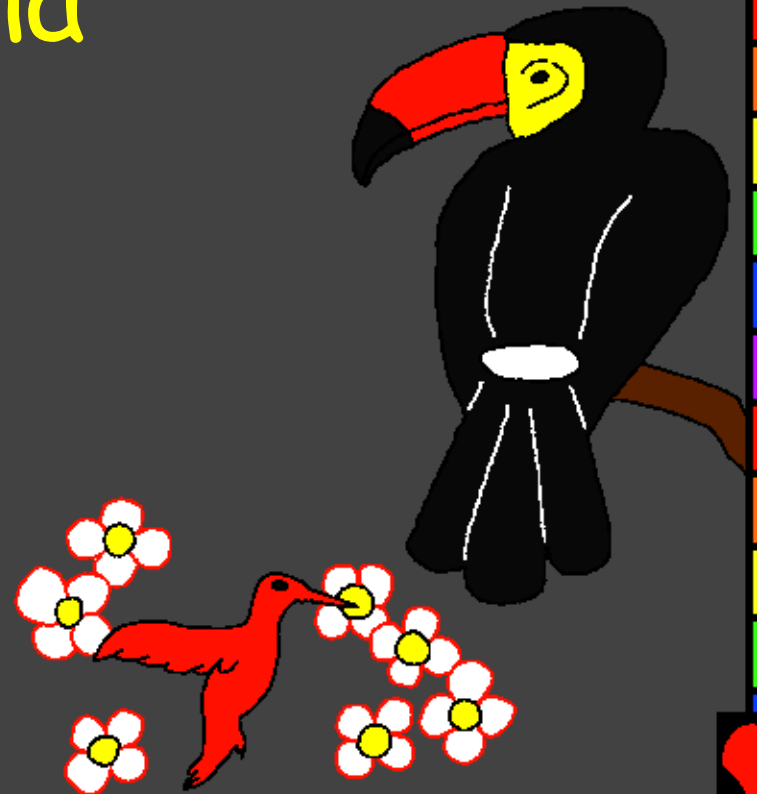


Embibilia pala
Okaliye

Suku etchi
apanga ovina
viosi



Tchasonehiwa la: Edward Hughes

Tchasesamiswã la: Byron Unger; Lazarus
Alastair Paterson

Tchapangiwa la: Bob Davies; Tammy S.

Tchapitulwiwa la: www.christian-translation.com

Tchapangiwa la: Bible for Children
www.M1914.org

©2021 Bible for Children, Inc.

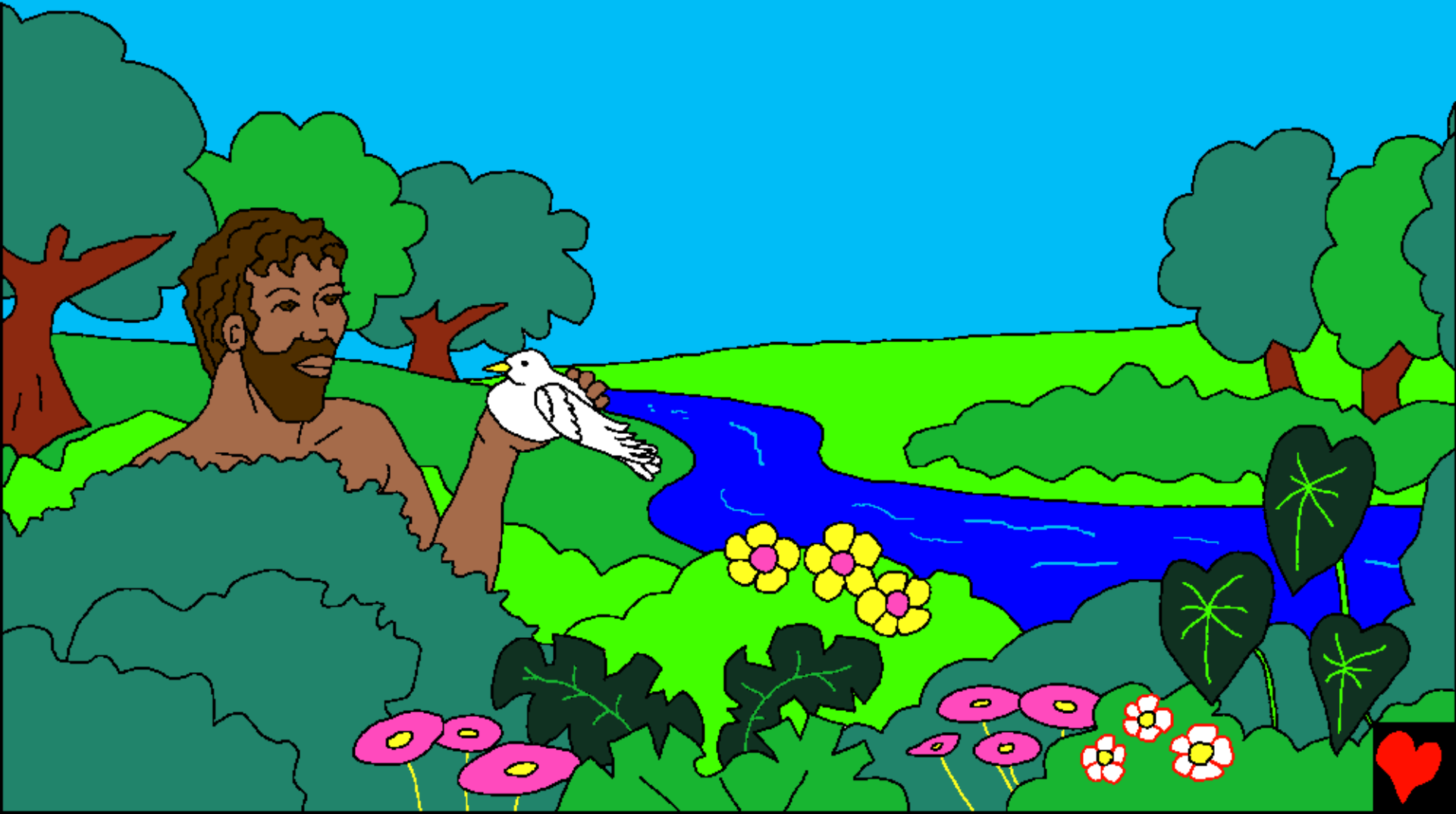
Okwetchelela: Ove okwete okusetekela ale okusonehã
alusapo, seti kutchilandisa.



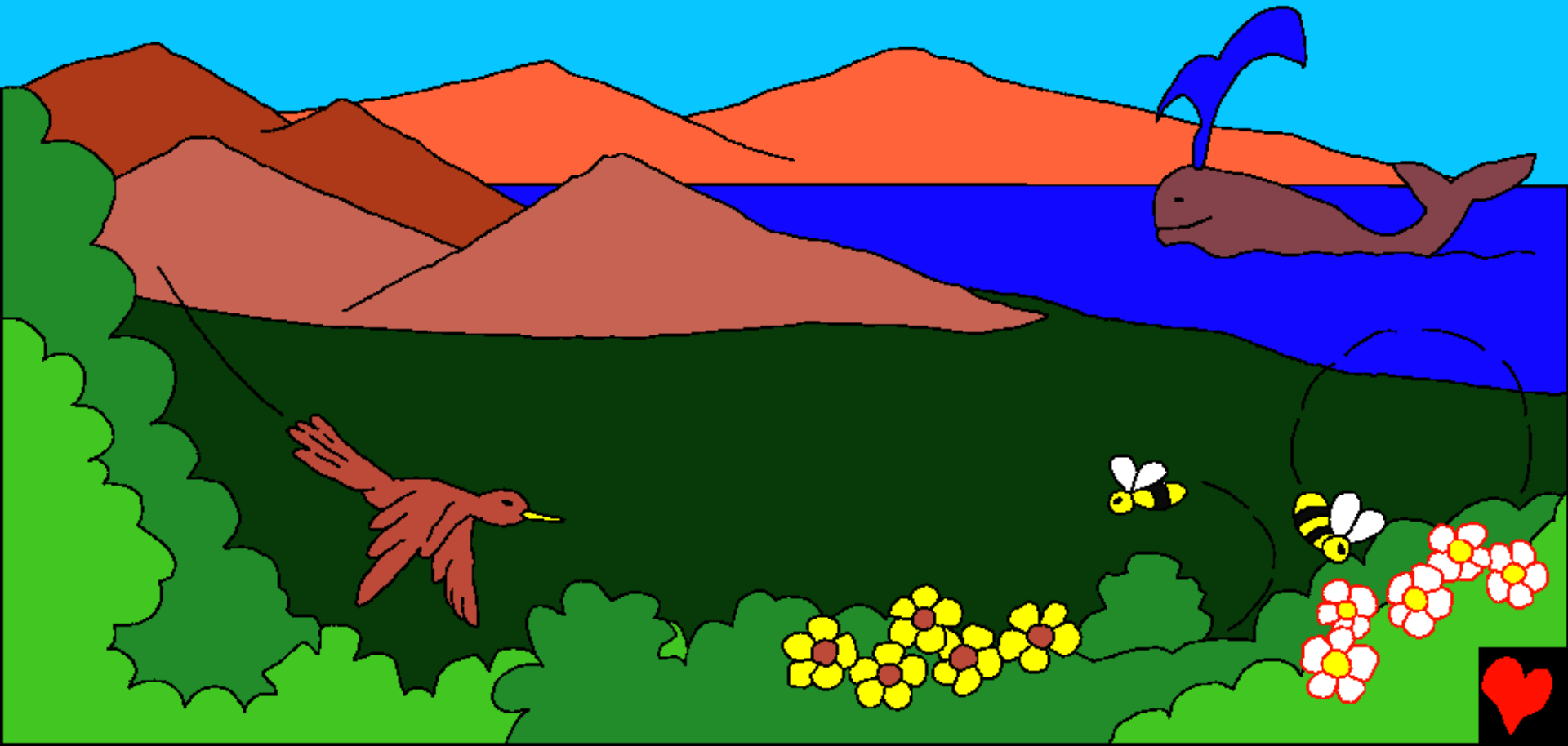
Elhe watupanga? Embibiliya, ondaka
ya suku, lipopia ndomo omanu vafetika.
Alima atete, Suku wapanga Andama
loneketela yoposi.



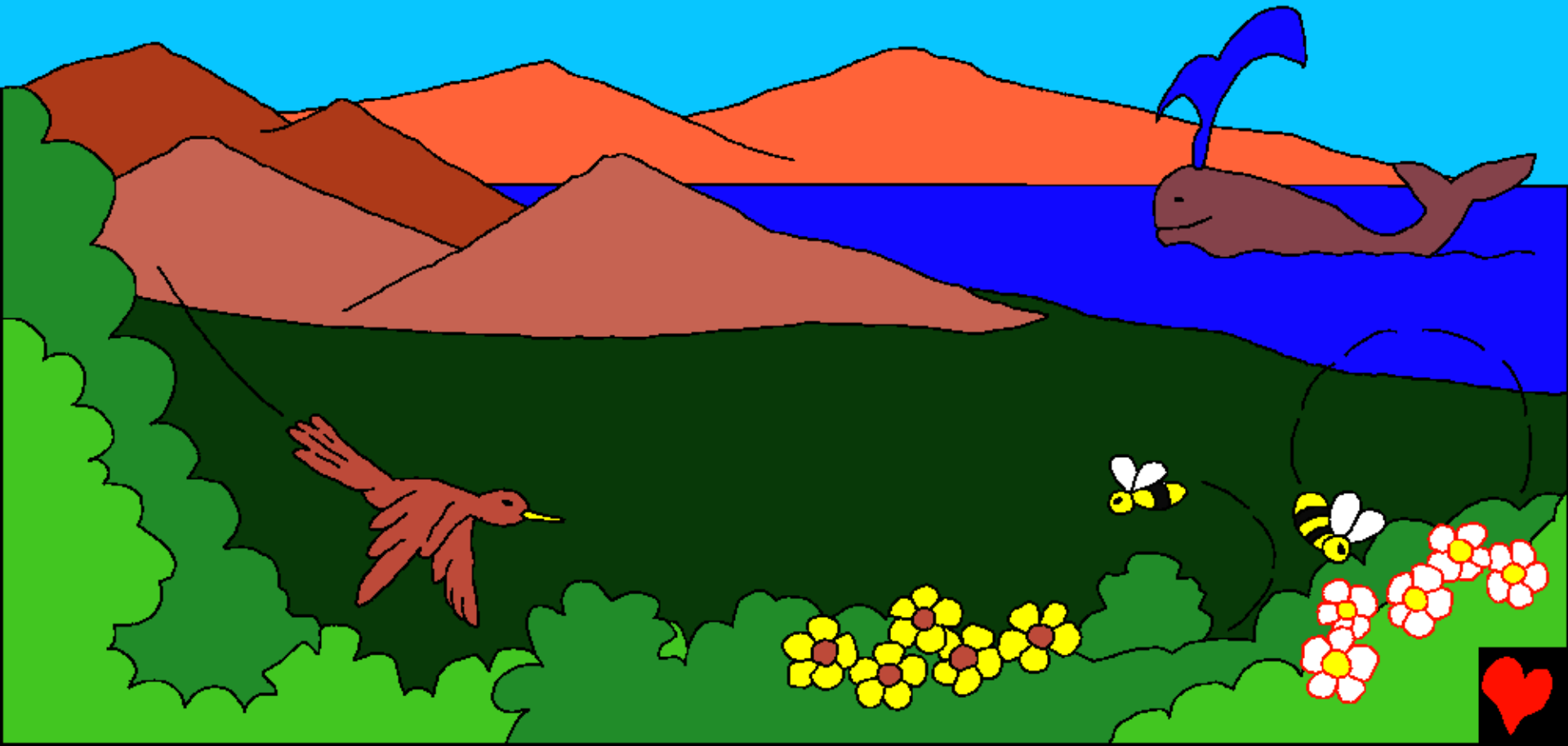
Etchi suku apepelela ofela yomwenho mo
Andam, eye weya omwenho. Eye wasaŋga
otchumbo tchafina watchitukula Eden.



Osimbu andi Suku kapangele Andama,
Eye wapanga olwali Iwaposoka
waluyukisa lovina wyiafina.



Kamwe kamwe Suku wapanga olukalu
lwolomunda, ikulã viwa lo viti visõvi,
olondjila lolonhi, olombisi kwenda
olohale. Suku wapanga tchosi.

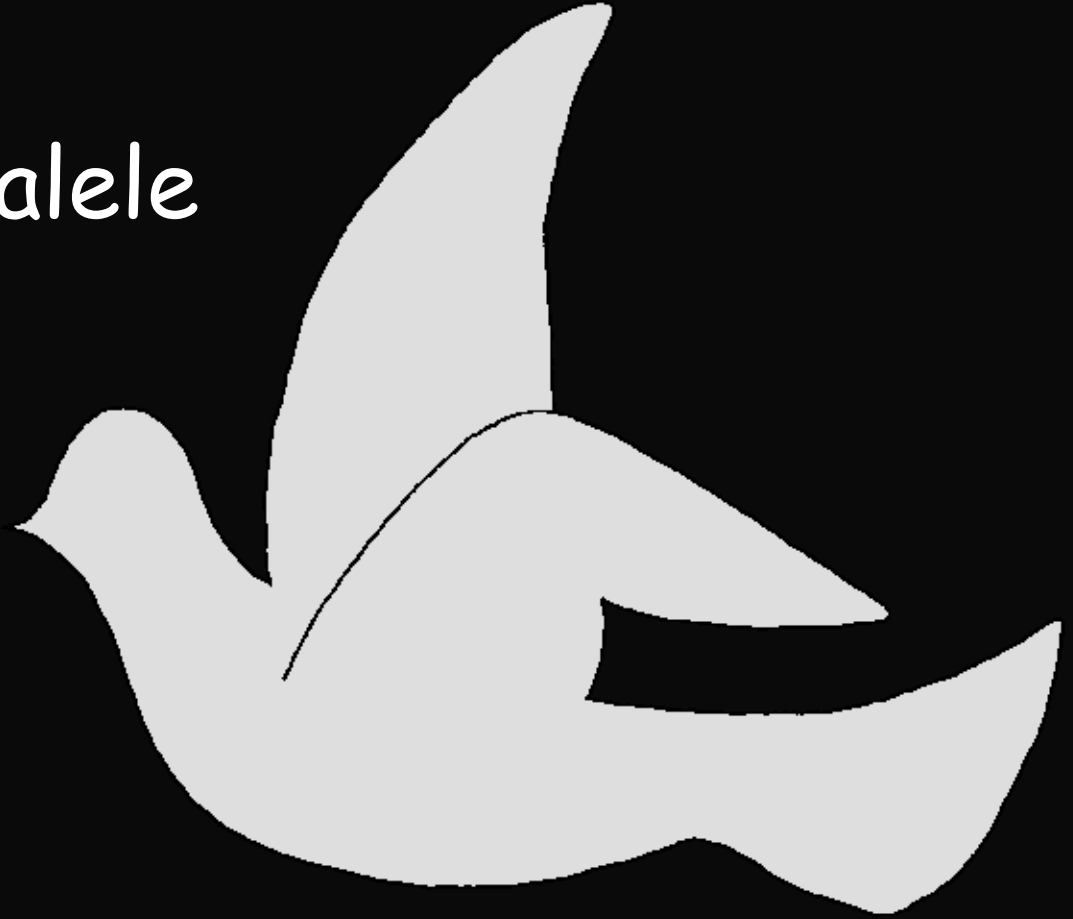


Kefetikilo, Suku
kapangelele latchimwe,
latchimwe tchakalako
isuku ñgo lika.

Kakwakele
omanu ale
alukalu ale ovina.
Latchimwe.



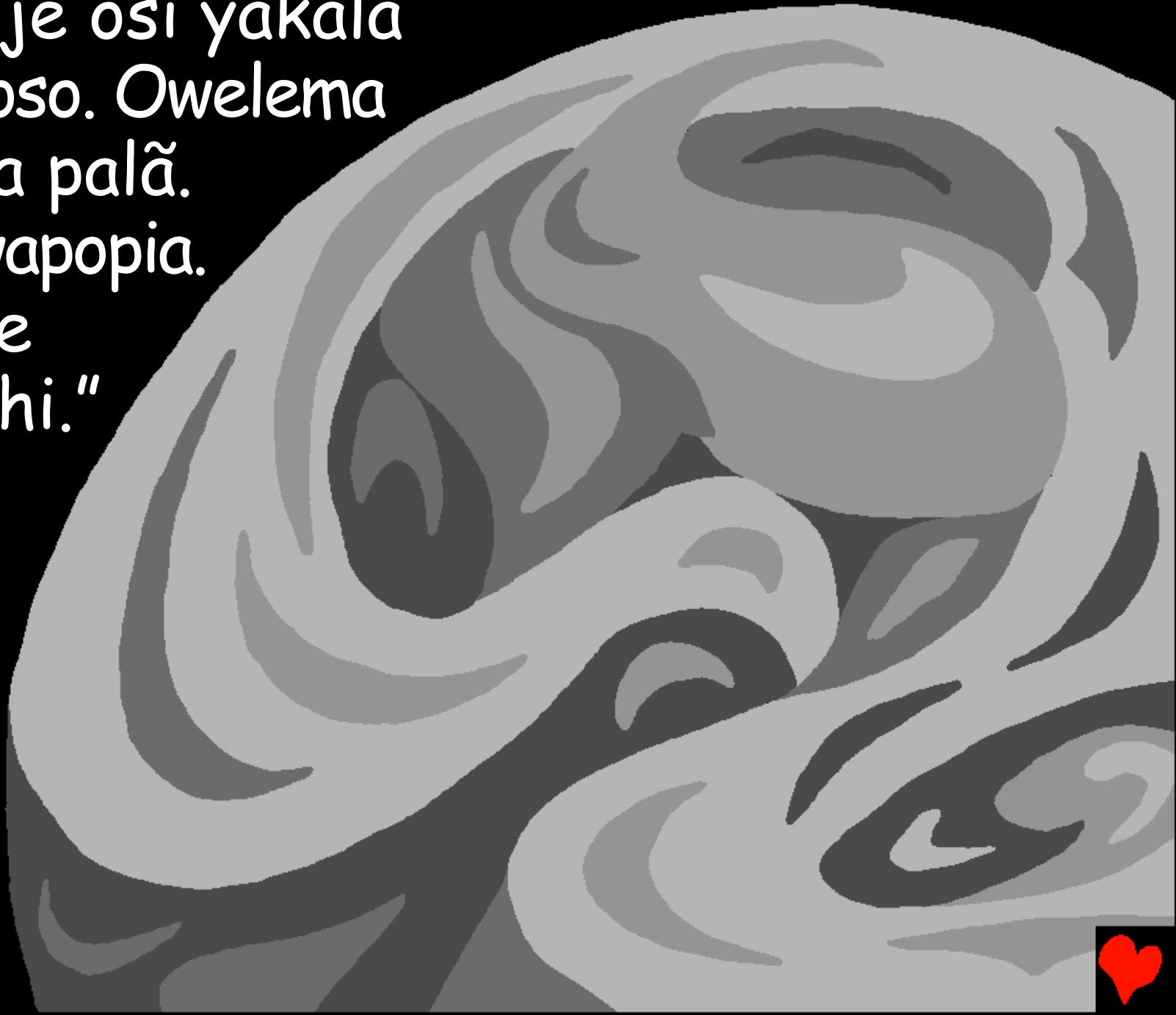
Kakwakalele otchinhi
ivo kakwakalele
owelema. Kakwakalele
kilu lokombwelo.
Kakwakalele ete
lyapita leteke
liya. Kwakala
ñgo Suku.



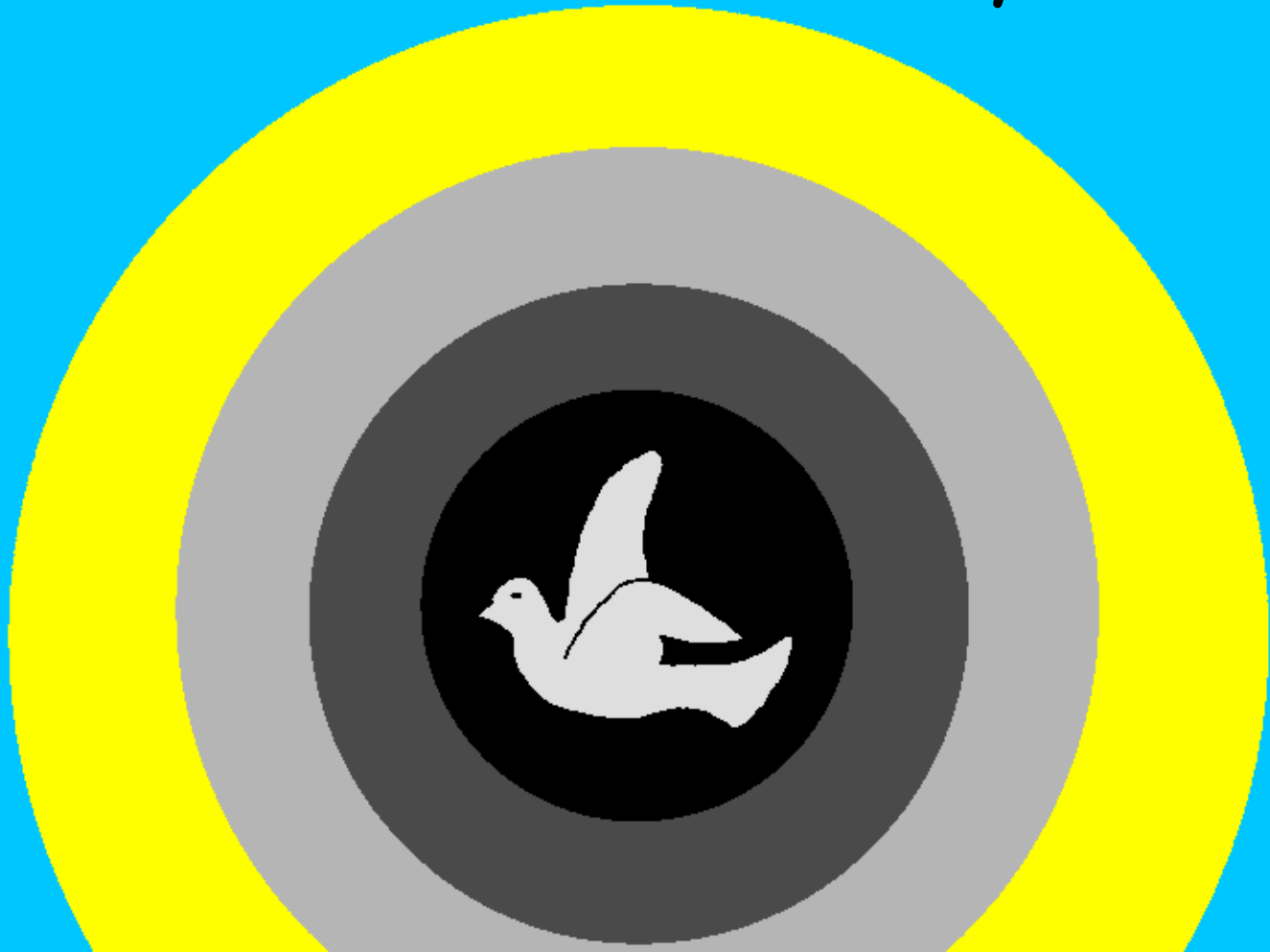
Kefetikilo, Suku walulika
ilu losi.



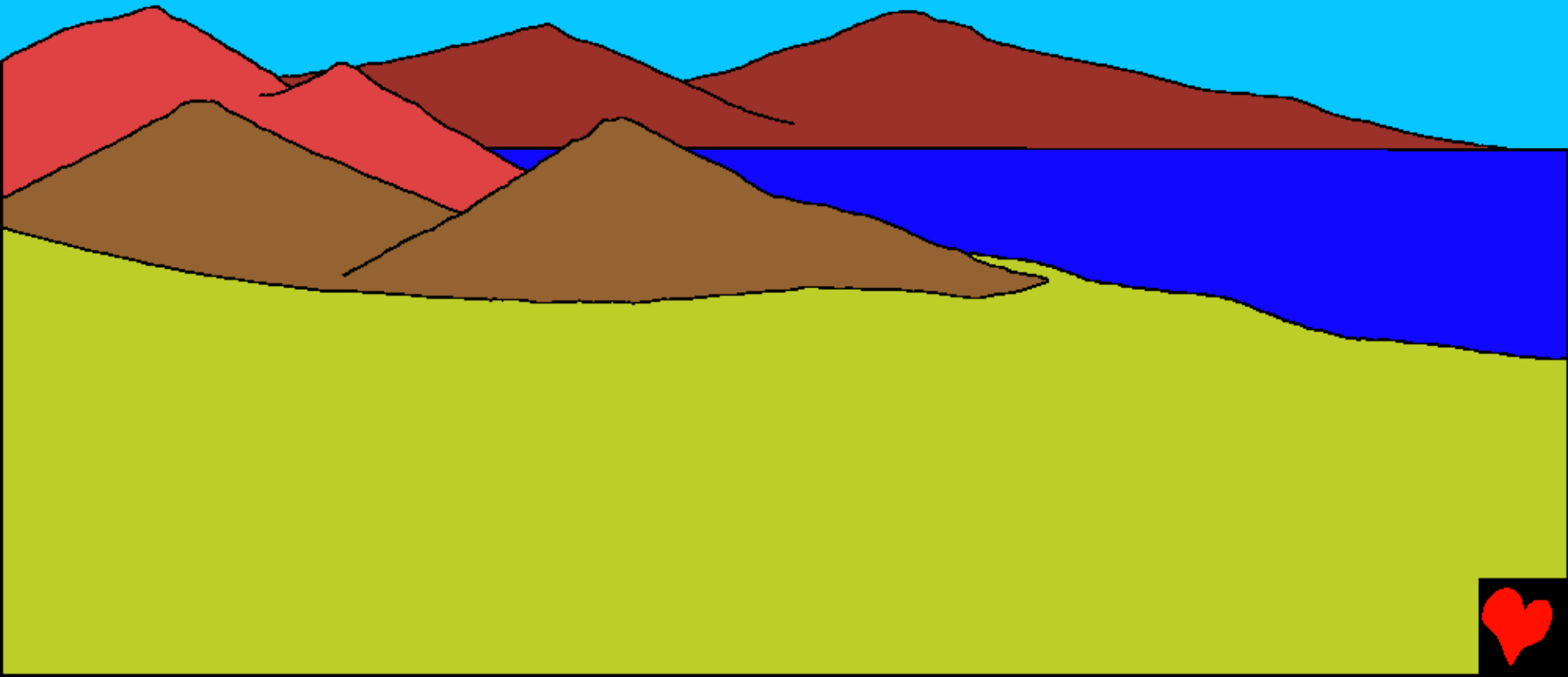
Kwendje osi yakala
upolokoso. Owelema
lwakala palã.
Suku wapopia.
"Kokale
otchinhi."



Otchinhi tchapangiwa. Suku otchinhi
watchitukula eteke noke owelema
walutukula uteke. Kweya uteke noke
omenle tchakala eteke lyatete.



Keteke lyavali, Suku watepa ovava
akalunga, ovava wakapa meñhi lilu. Eteke
lyatatu, Suku, "Onenle yakukuta wakapa
osi." Suku wamõla okuti tchosi tchiwa.



Suku wapangavo ikunla atumba loviti.
Ivo vamõlehã. Kweya uteke noke
omenle tchakala
eteke lyatatu.



Pwãĩ Suku wapanga utanha, lowi, kwenda
olombungunlunlu laumwe
opondola okuvitenda.
Kweya uteke noke omenle
tchakala eteke lyakwãlã.



Mo kalunga mwakala
inhamã lolonsi
kwenda olondjila
ponenle ya Suku.
Keteke lyatãlõ Eye
wapanga.



Noke etchi Suku apopyia vale. Eye, mosi wakapamo inhama vyiosi... Okufetikila kwevi vitito toke vinene. Olondjamba, Olohima, olomalanga, lo longandu. Inhama vyiosi vyiapangiwa la Suku.

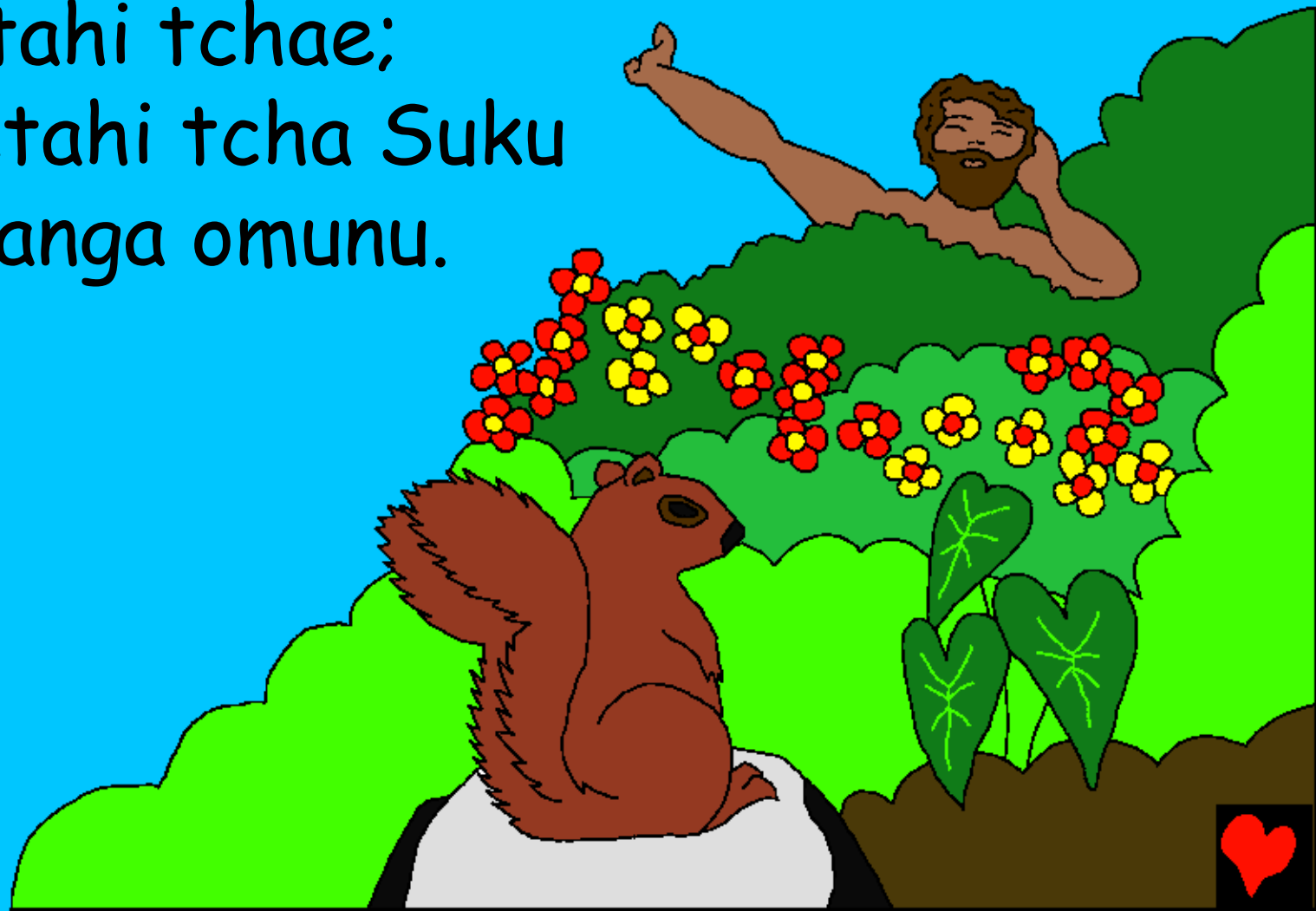
Kweya uteteke noke omenle tchakala eteke lyepandu.



Suku wapanga tchosi mwateke epandu-
ovina vyiosi viwa. Tchosi watchipangila
pala ulume. Okulya ovapaya linhama
tchosi pala eye.



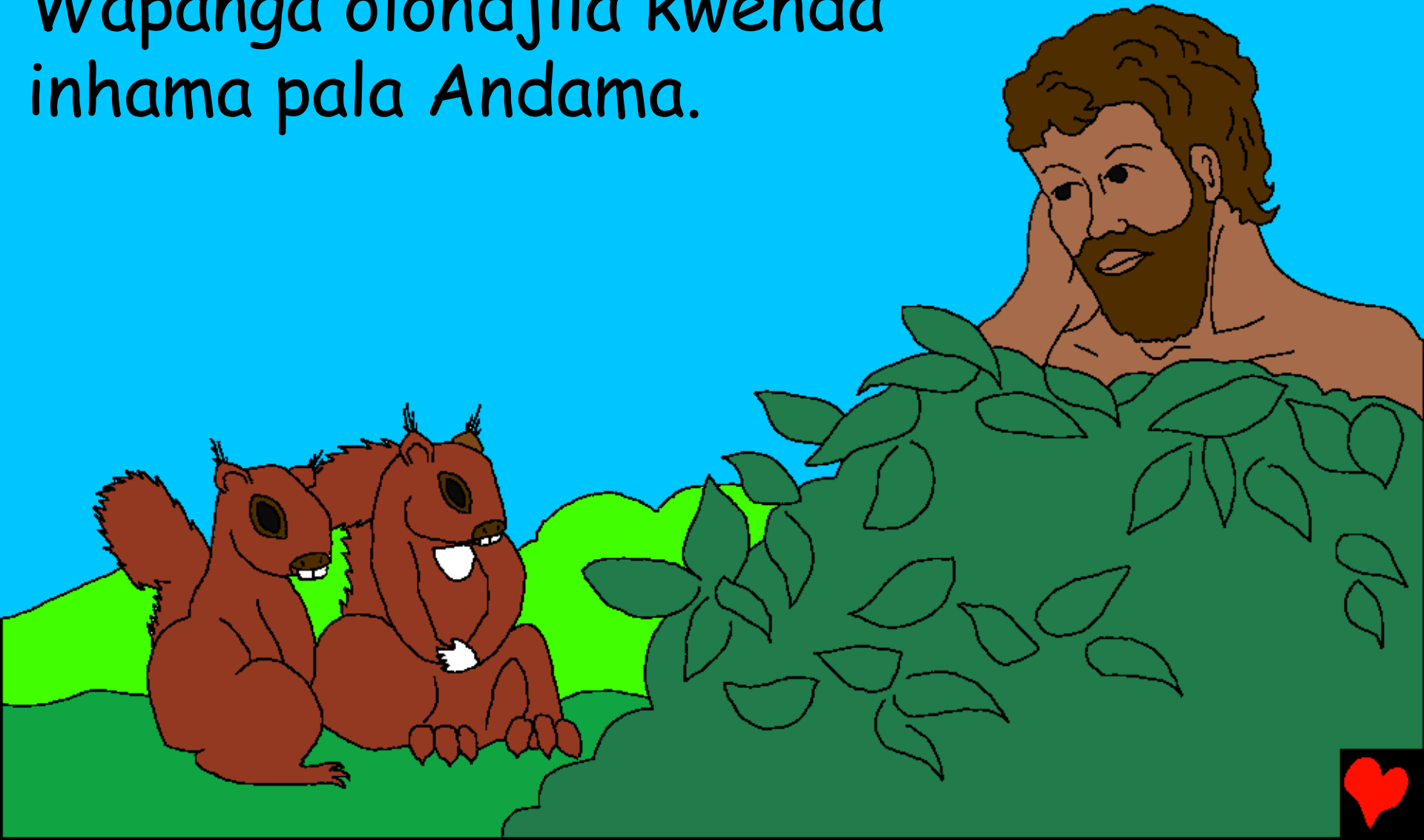
Suku ati tupangi omunu otchisetahi
tchetu. Otcho akale mwele vyiovia
vyiosi posi. Suku wapanga omunu
otchisetahi tchae;
Otchisetahi tcha Suku
watchipanga omunu.



Suku wokapa onduko
ya Andama. Wowihã
otcumbo otcho
alye tchosi asea.
Mãsi kapondola
okulya apako uti
wekulihinso tchetchi
tchiwa letchi tchivi.
Nda walya epako
lyuti uhu okafa.



Kwendje Ñgala Suku, wamõlä tchakuty
katchiwako ulume okukala lika.
Wapanga olondjila kwenda
inhama pala Andama.



Andama waluka inhama vyiosi. Pwãï eye wakala ulika. Mãsi pokati kolondjila linhama eye kasañgele ukwavo.



Suku wapekelisa Andama. Wopa ulumati
ponenle yae, kwendje Suku wapanga ukāi
lolumati wa Andama.

Ukāi Suku wopanga
otcho akale la Andama.



Suku wapanga ovina vyiosi
mwateke epandu. Suku
wasandelela eteke epandu
vali eteke epandu vali
walipangela pala okupuluyuka.



Mo tchumbo tcha Eden, Andama
la Eva vakala ndulume lukāi
vasatchukila mu Suku. Suku
wavalinga ñgala, kwenda
olondavi kwenda akamba.



Suku etchi apanga ovina viosi
Alusapo londaka ya suku, Embibilia,
Okusañga etchi
Efetikilo mosi-vali

"Otchiñgililõ lolondaka nhihe otchinhi."
Osamo 119:130



Esulilo



Olusapo embimbilia atusapuila ngãla yetu
yehova wayututunga e o yongola
ndakutio ukulinhã.

Yehova wakulinha o kuli tupanga evi vivi,
eye ovitukula hati ekandu. Kuenge ofeto
yekandu olofa pole omo suku o tusole,
watuma omolã hiaye ocho afile akandu
etu. Kuenge chilo wapindunka o kasi kilo
nda otava ku yesu e upinga hati netele
akandu angue eiye o chilinga kuenge
ekaka la liaye oloneke viose.



Nda otava ndakuti echi ochili,
sapuila yehova:

Hati a ñgula yesu ndatava ko kuove o mo
wagila a kandu angue chilo wa pinduka,
netele a kandu hangue o cho ndikuate o
muenho wokalie ñgatice pala acho
ndukuvu mbile.

yehova tanga embimbilia vangula la yeova
oloneke viose youno 3:16

