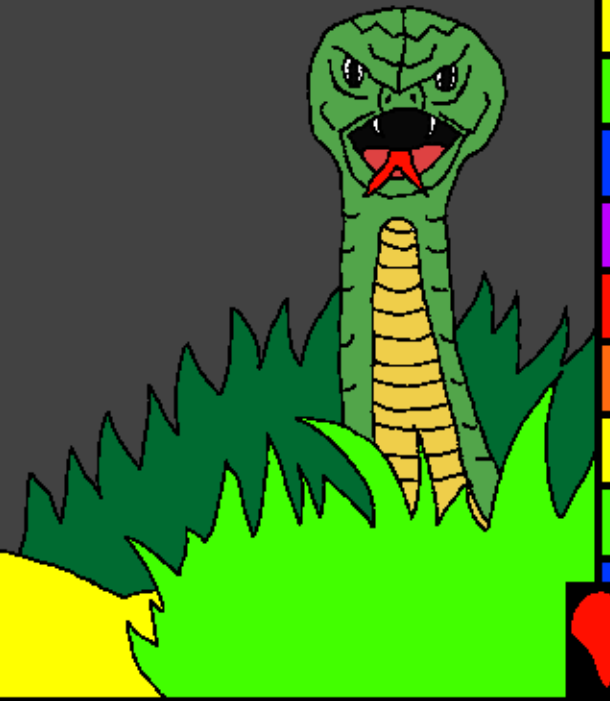


Embibilia pala
Okaliye

Ukufeti kulume
wowelema ka



Tchasonehiwa la: Edward Hughes

Tchasesamiswã la: Byron Unger; Lazarus
Alastair Paterson

Tchapangiwa la: M. Maillot; Tammy S.

Tchapitulwiwa la: www.christian-translation.com

Tchapangiwa la: Bible for Children
www.M1914.org

©2021 Bible for Children, Inc.

Okwetchelela: Ove okwete okusetekela ale okusonehã
alusapo, seti kutchilandisa.



Suku wapanga ovina vyiosi!
Etchi Suku apanga ulume
watete, Andama, eye wokapa
mo tchumbo tcha Eden lukãï,
Eva. Ovo vakala tchiwa
la Suku vasatchukile
teke le teke ...



Suku eti
kahukali ipako
Iyo viti vyiosi?
Onhohã yapula Eva.
Etu tupondola tulya
apako õsi mãsi, eye
wotambulula.



Etu nda twalya
apakoatcho,
tukafa. Ene ka
ukafa, onhoha yatambulula.
Ene ukakala nda Suku. Eva
wamõla kuty epako
lyatcho liwa. Eye
wayeva onhoha noke
walya epako.



Noke Eva walueyela Suku
eye watcha epako otcho
Andama alye vo. Andama
ati cho, ame silueyela
ondaka ya Suku.





Etchi Andama
kwenda Eva valueya, ovo
valimbuka okuty vakala atako.
Noke yactho vavandja amenla
otcho valisiteke, Suku wapiti.



Etchi ovina vyiosi viatula Suku weya mo
tchumbo. Eye wakulihinle ale etchi
Andama la Eva vapanga. Anda
ati y Eva wandilueyisa.
Eva ati onhoha ya ndilueyisa.



Suku ati, onhoha isiñgaliwe. Ukāi
okayeva olongembyia kokusanga
amālā. Andama, meconda lye
kandu, osi yasiñgaliwa. Ove
okalya kesalamihō lyove.



Suku wakapa Andama
la Eva otchipālā lo
tchumbo. Mekonda
lyekandu lyavo, ovo
valitepa momwenho
Suku avāhā!





Suku wapanga
olomunga otcho vilave
otchumbo. Suku wapanga
iwalo vyio vipa otcho
Andama la Eva vawale.
Suku wopa
py ovipa?



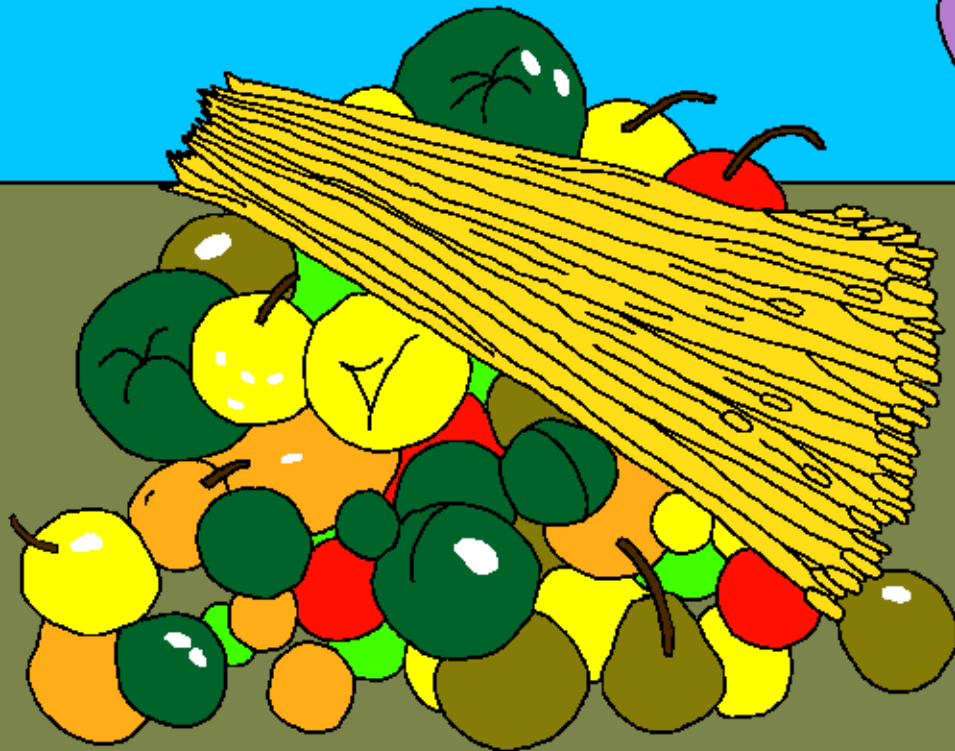
Otembo, epata lyakitiwa la Andama
la Eva. Omõla watete, y Cain, wakala
ongundja. Omõlã wavali, y
Ambele, wakala ungombo.



Eteke limwe Cain watcha ikunlã vimwe
ndilumba. Ambele walumba okameme
kalenla mwelw tchiwa ku Suku.
Suku wasolaotchilumba
tcha Ambele.



Suku kasolele otchilumba Cain
atcha. Cain tchoteminsa. Mãsi
Suku ati, nda ove wapangele
etchi tchiwa, ove nda
kwatavele?



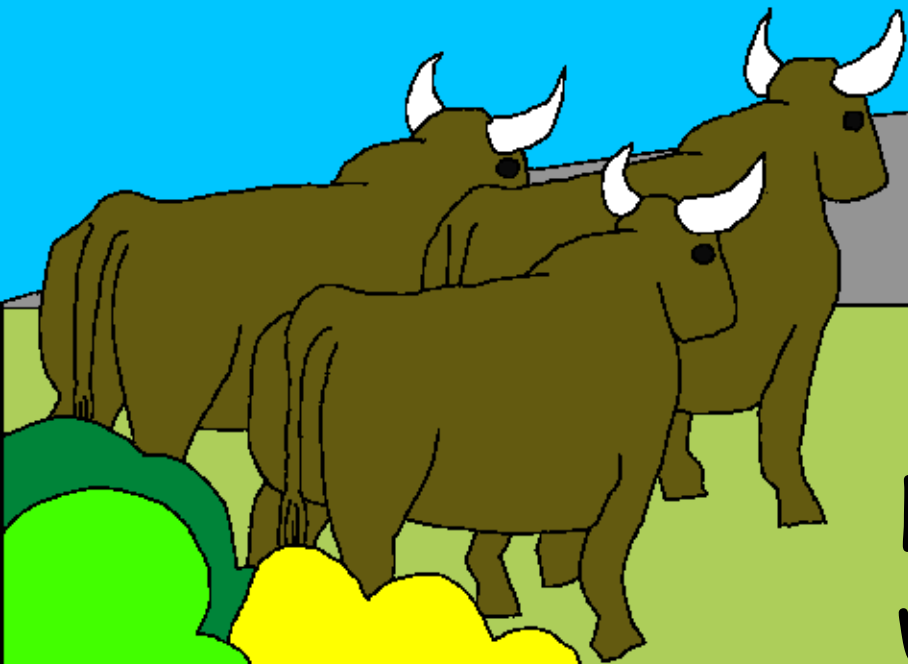
Cain pwāi le nheñgo lyatcho.
Koka kumbi wakonga Ambele
otcho oponde.



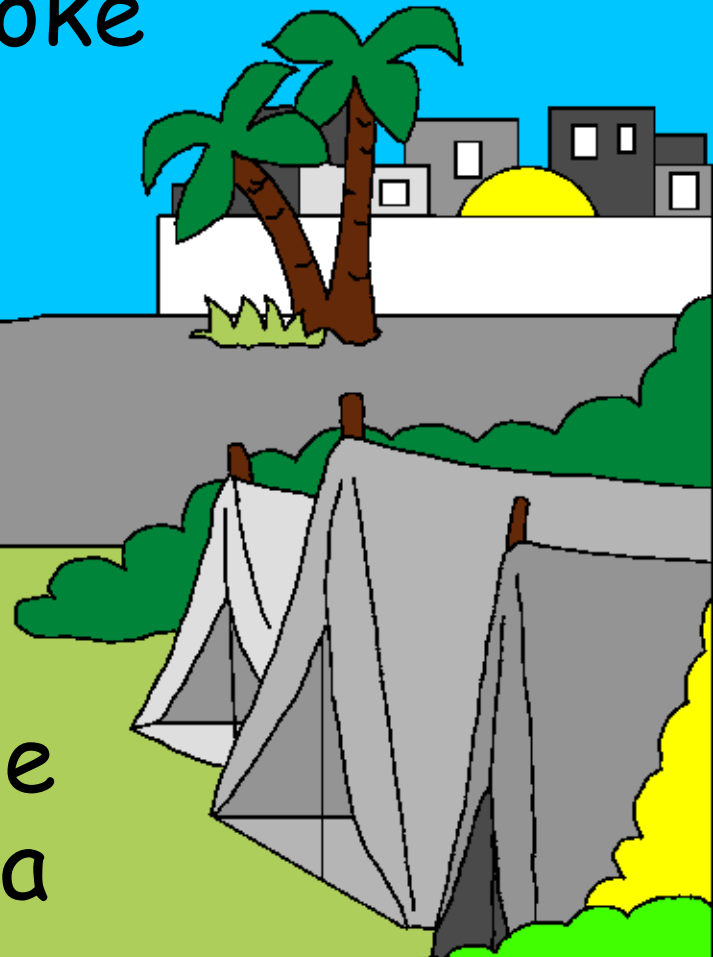
Suku wapopya ku Cain. Mandjove olipy?
Ame sitchi, Cain wakemba. Ame ndu
ndavi ya mandjange? Suku wasiñgala
Cain lo lohali wyapyiälã.



Cain watunda ponenle ya Ñgala.
Eye wakwela omõlã a Andama la
Eva. Ovo vapanga epata. Noke
Cain wakwata olonekulu



kwendje
wasañga
olupale.



Epata Iya Andama la Eva Iya kula
lo ndjanga. Ateke ana, omanu
vapita añamõ la ñamo toke etali.



Etchi omōlāvo akitiwa, Eva eti, Suku
wanhihā Sete otcho apiñgale po
lukalu wa Ambele. Sete wakala
ulume wa Suku mwañamō 912
wakwata omālā valwa.



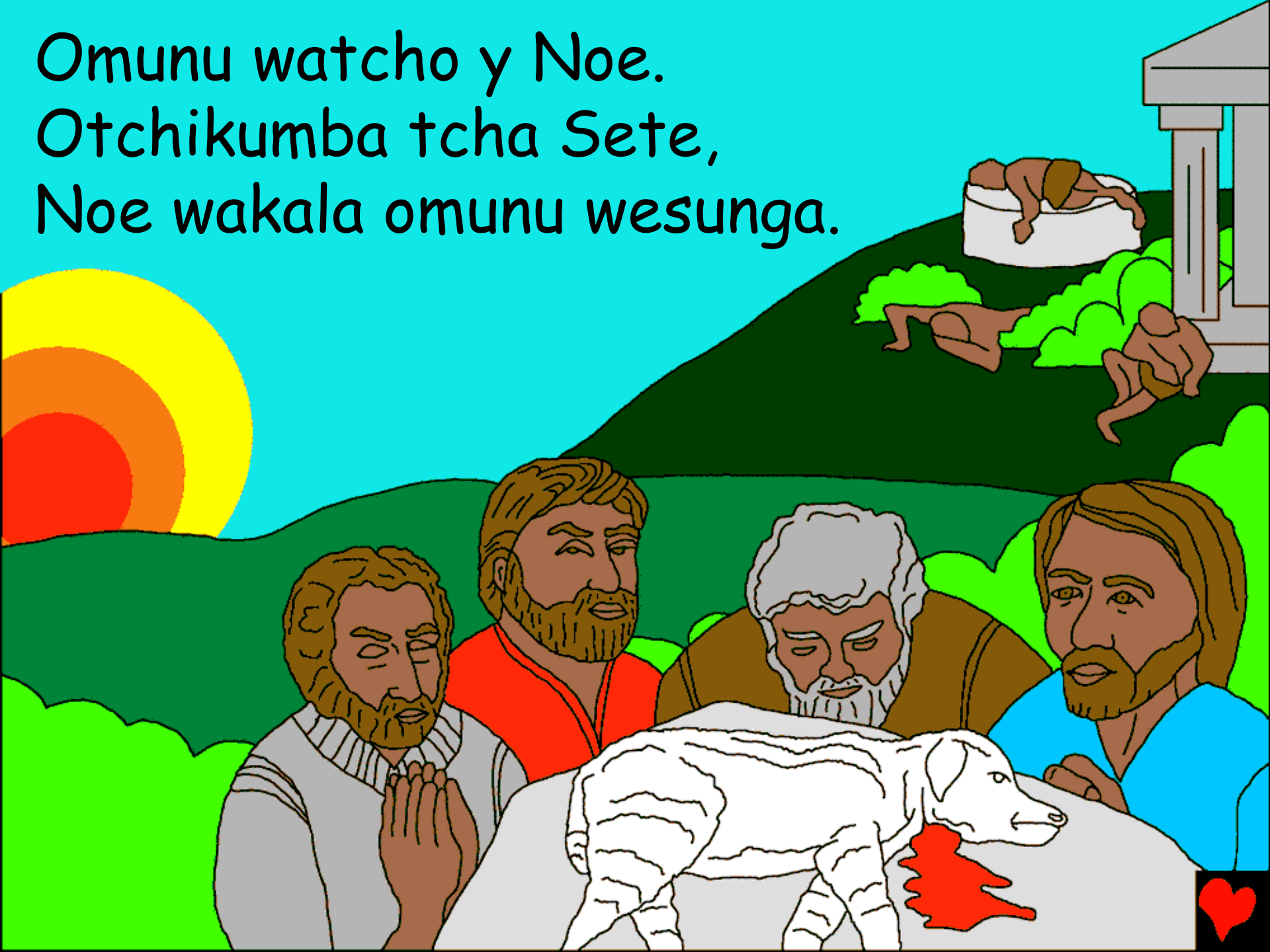
Mo lwali, omanu vafetika
okukala imbinde. Suku
okutchimõlã, wasima
okukundula olwali.



Inhama vyiosi lo londjila.
Suku walivela okupanga
omunu. Māsi Suku
wasandjukila omunu
umōsi ...



Omunu watcho y Noe.
Otchikumba tcha Sete,
Noe wakala omunu wesunga.



Eye wandela mo Suku. Eye vo wakala
lo mālā vatatu olonāve nave
wyia Suku. Kalye Suku
oyongola okutunga
epata limwe
la Noe.



Ukufeti kulume wowelema ka

Alusapo londaka ya suku,
Embibilia,

Okusañga etchi

Efetikilo 3-6

"Otchiñgililõ lolondaka nhihe otchinhi."

Osamo 119:130



Esulilo



Olusapo embimbilia atusapuila ngãla yetu
yehova wayututunga e o yongola ndakutio
ukulinhã.

Yehova wakulinha o kuli tupanga evi vivi,
eye ovitukula hati ekandu. Kuenge ofeto
yekandu olofa pole omo suku o tusole,
watuma omolã hiaye ocho afile akandu
etu. Kuenge chilo wapindunka o kasi kilo
nda otava ku yesu e upinga hati netele
akandu angue eiye o chilinga kuenge
ekaka la liaye oloneke viose.



Nda otava ndakuti echi ochili,
sapuila yehova:

Hati a ñgula yesu ndatava ko kuove o mo
wagila a kandu angue chilo wa pinduka,
netele a kandu hangue o cho ndikuate o
muenho wokalie ñgatice pala acho
ndukuvu mbile.

yehova tanga embimbilia vangula la yeova
oloneke viose youno 3:16

