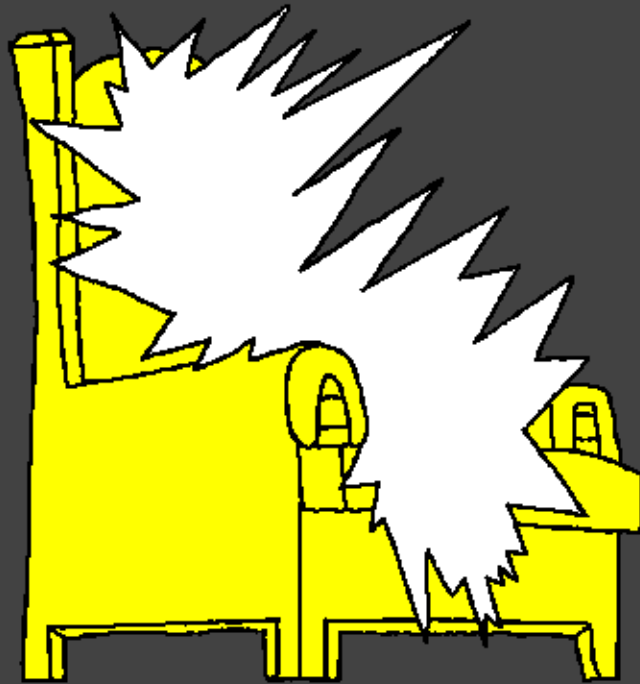


Mukanda wa Nzabi bua bana batekete



Diulu,  
lubanza  
lulengele lua  
Nzambi



Mufunde Kudi: Edward Hughes

Muleja Kudi: Lazarus  
Alastair Paterson

Mulonda kudi: Sarah S.

Mukudimuna kudi: [www.christian-translation.com](http://www.christian-translation.com)

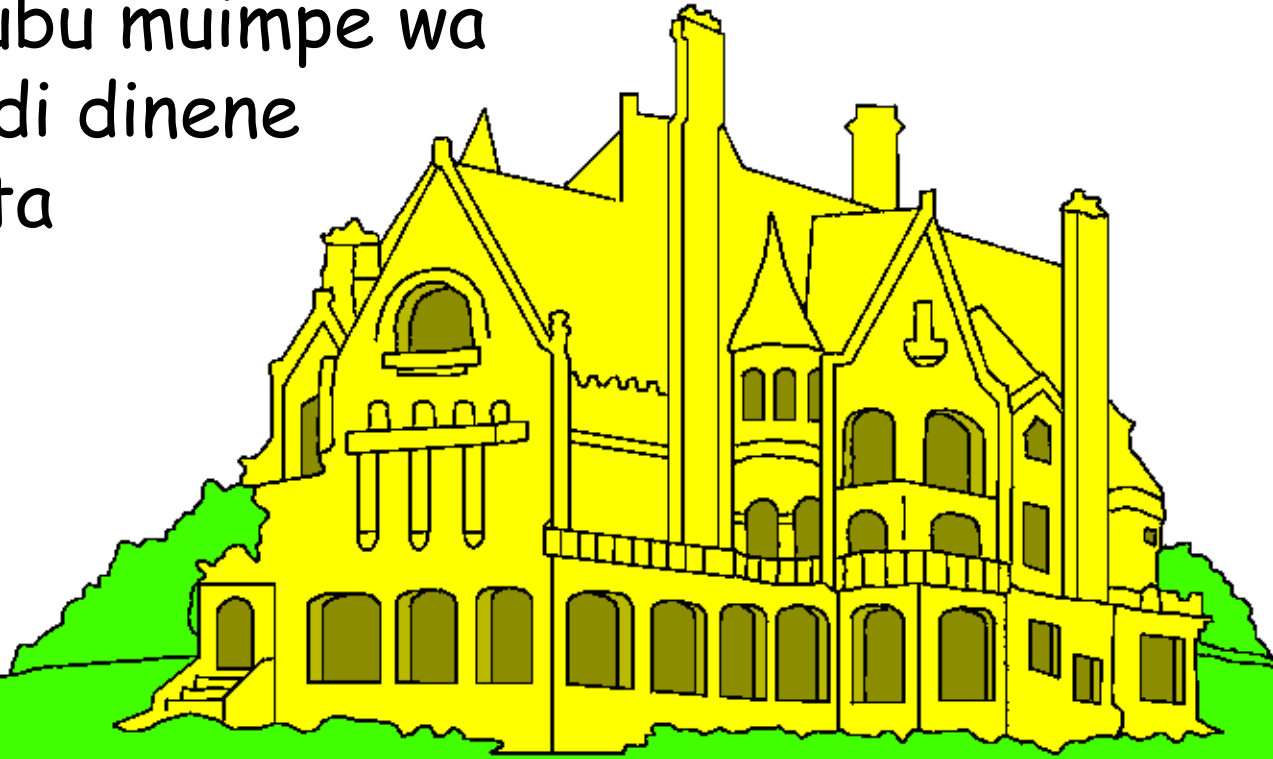
Mupatuisha kudi: Bible for Children  
[www.M1914.org](http://www.M1914.org)

©2021 Bible for Children, Inc.

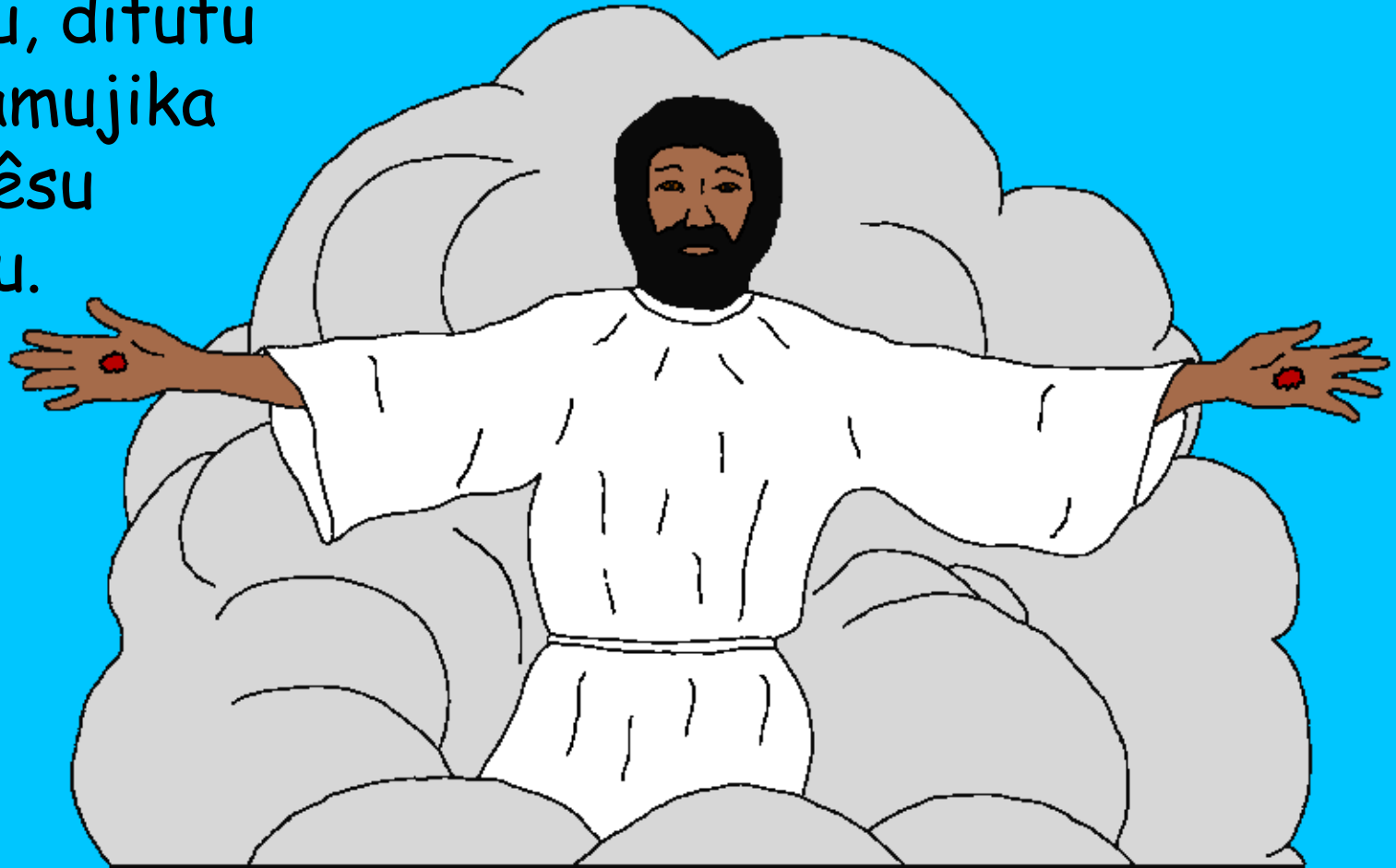
Licence: Vous avez le droit de copier ou d'imprimer cette  
histoire, tant que vous ne la vendez pas.



Patshivua Yezu pa buloba wakambila bayidi bende  
bua diulu. Yeye kudibikila ne "Nzubu wa Tatu wanyi",  
yeye kuamba kabidi ne mbalasa ya bungi.  
Dibalasa didi Nzubu muimpe wa  
munene. Diulu didi dinene  
ne dilengele kupita  
nzumbu ya pa  
buloba.



Yezu wakamba ne, "Ndi nya bua kunulongoluela muaba. Meme muye, munulongoluele muaba, nempingane kabidi ne nennuakidile kuanyi." Yezu uvua muye mu diulu, panyima pavua ye mubika ku lufu. Patshivuabu bayidi bende bamuntangila, Yesu wakabandishibua muulu, ditutu diakamujika ku m̂esu kuabu.



Kubangila ku tshine tshikondo atshi, Bena Kristo bavua bavuluka milayi ya Yezu' kupingana ne kubanganta. Yesu wakamba ne uvua upingane diakamue, dituvua katuyi belela meji to. Kadi bua bena Kristo bavua bufue kumpala kua yeye kulua? Mukanda wa Nzambi udi wamba ne bakuya buludiludi kudi Yezu. Ke kuikala mu mubidi idi

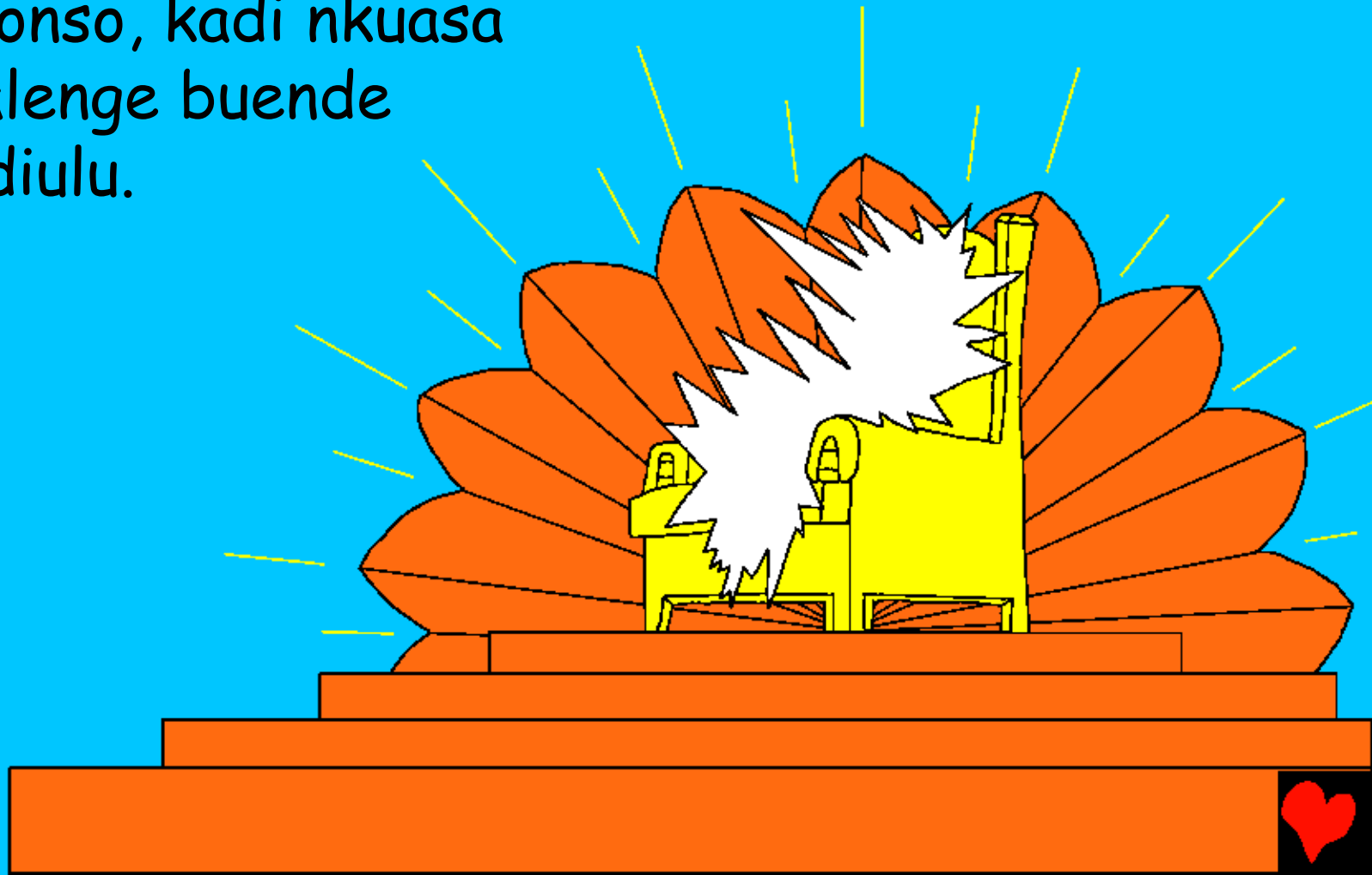
kuikala kumpala  
kua mukalenge.



Pabuipi ne  
Mukalenge



Buakabuluibua, mukanda wa ndekelu wa mu Bible,  
udi utuleja mushindu kayi diulu didi dilenga. Tshintu  
tshitambe ku buimpe tshidi ne mushindu wa pa  
buawu, diulu didi nzubu wa Nzambi. Nzambi udi  
miaba yonso, kadi nkuasa  
wa bukalenge buende  
udi mu diulu.



Banjelu ne binga bifukibua bia mujulu bidi  
bitendelela Nzambi mu diulu. Nunku bantu  
ba Nzambi bavua bafue ne kuya  
mu diulu. Bimba misambu ya  
pa buau ne kutumbisha Nzambi.

Mona mamue meyi yamu musambu  
umue bavua bimba: UDI

MUKUMBANE

BUA

KUANGATA

MUVUNGU

NE

KUKANGULA

BITAMPI

BIAWU, ...



... BUALU WAKASHIPIBUA NE KU MASHI  
EBE WAKASUMBILA NZAMBI+ BANTU BA  
MU TSHISA TSHIONSO NE MU  
MUAKULU WONSO NE MU  
TSHISAMBA TSHIONSO NE  
MU DITUNGA DIONSO.

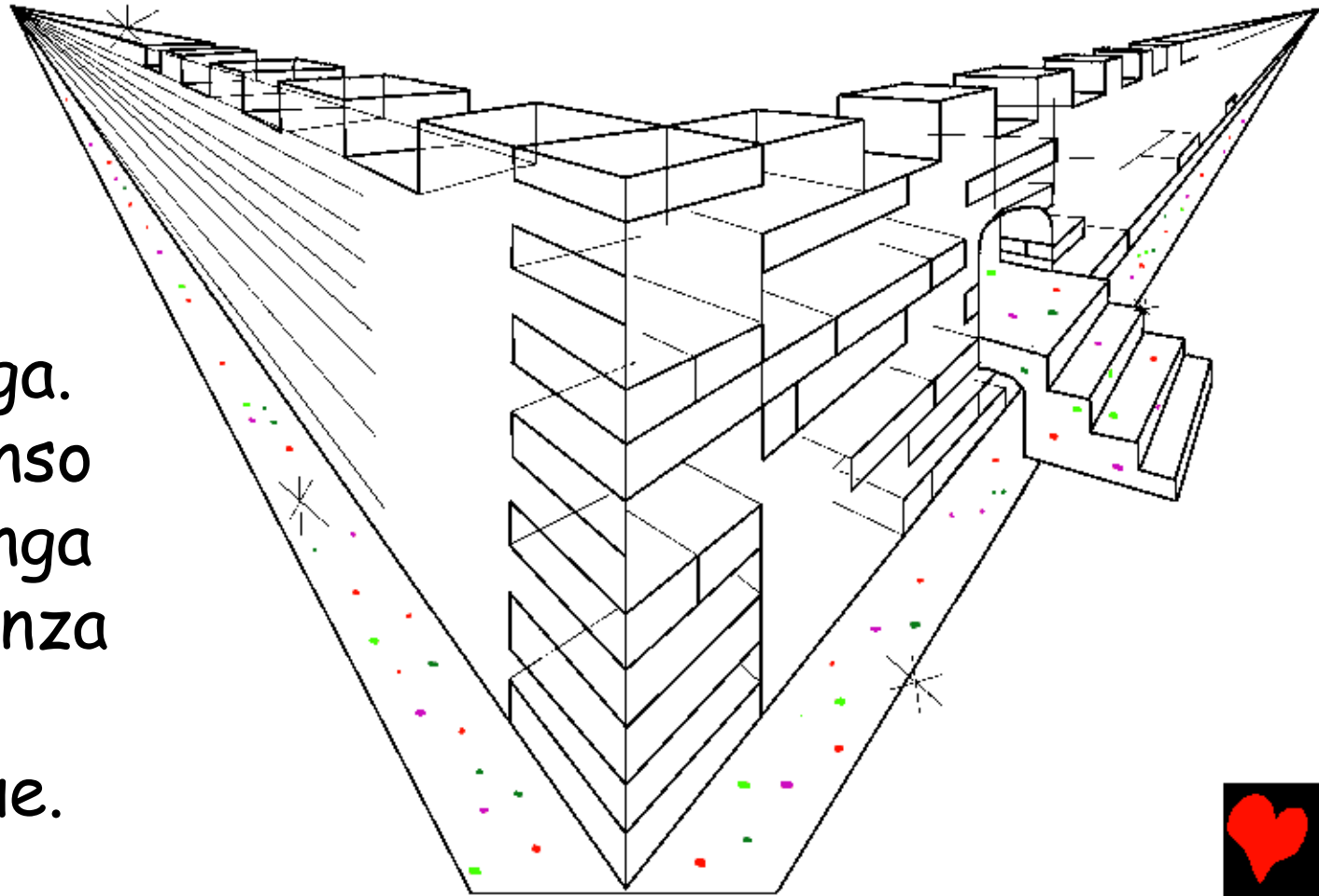
(buakabuluibua  
5:9)





Dipeji dia kundekelu kua bible didi dileja diulu ne  
"Yelushalema Mupiamupia" Idi munene, munene wa  
dikema, ne bimanu bile bile bia pambelu. Tshimanu  
tshivua tshibaka ne mabue a jaspe, matoke t<sup>ô</sup> bu  
ntalatala. Bishimikidi biakalengejibua

ne mabue a  
mushinga  
mukole,  
abalakana ne  
bilongo bilenga.  
Tshiibi tshionso  
tshia tshimenga  
tshivua tshienza  
ne dibue dia  
busanga dimue.



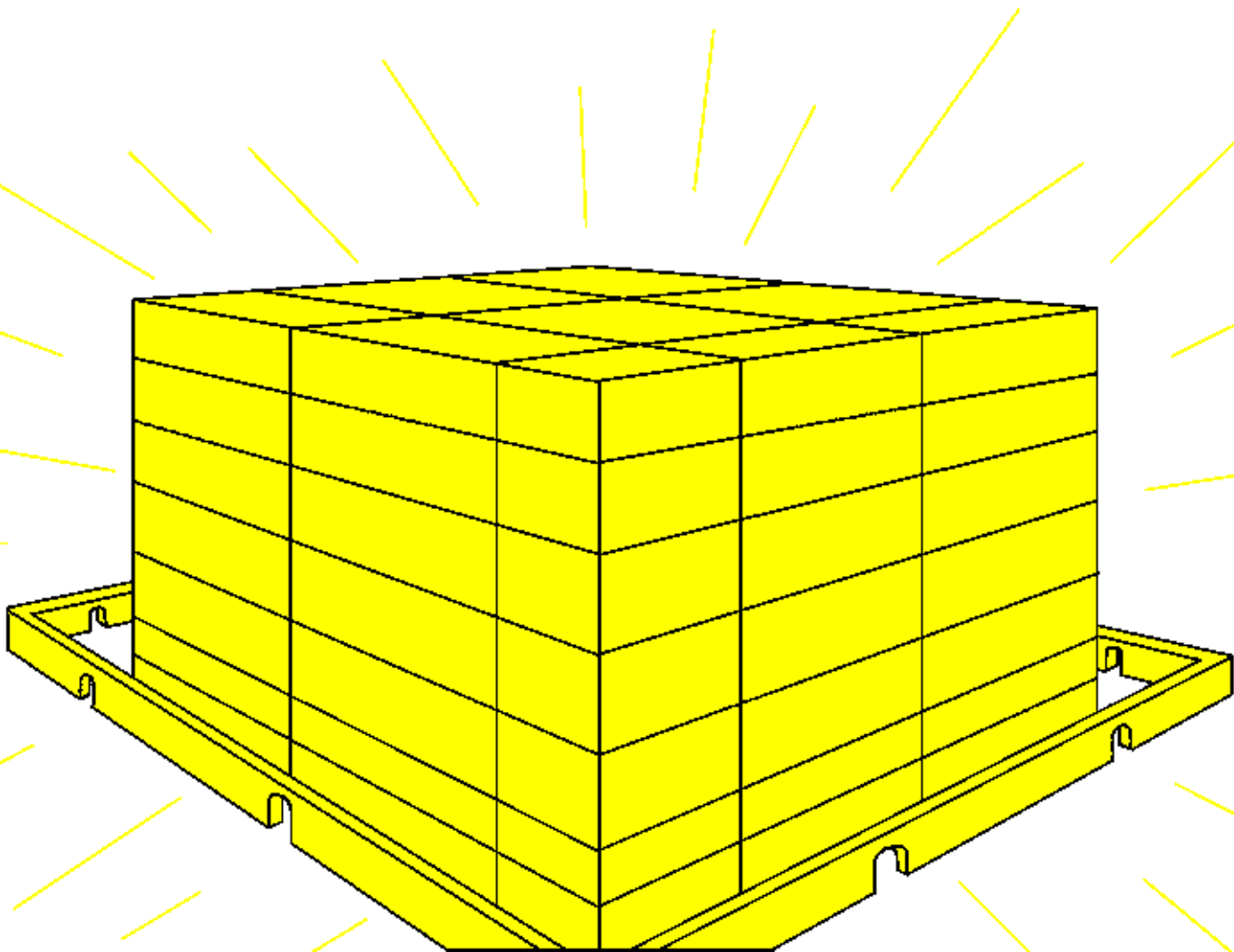
Biibi abi binene bia ke bivua bia kunganga. Tubuelayi ne tutangilayi amu ... Woo! Diulu didi mene dilenga pambelu. Tshimenga tshivua tshia or mukezuke bu lumuenu lutoke zezeze.



Musulu mulengele wa mâyi a muoyo matoke tòò bu ntalatala, apatuka mu nkuasa wa butumbi wa Nzambi. Mutshi wa muoyo, bu uvua kabidi kumpala mu budimi bua Edene. Mutshi eu uvua wapabuau. Uvua uluama mishindu mishilangane ya bimuma, mushindu mukuabu ku ngondo yonso. Ne mabeji a mitshi ayi avua bua kuondopa nawu bisamba.



Diulu kadiena ne bualu ne dickenkesha dia diba ne ngondo. Butumbi bua Nzambi budibu bukenkesha. Kakuena butuku nansha.



Nansha nyama idi mishilangana mu diulu. Bonso badi batu musangelu. Mbua wa ditu ne muana wa mukoko nebadie pamue Nansha nyama wa ntambue udi udia mashinde bu ngombe. Mukalenge wakamba, "Kabiena bienzela bintu bibi ne kabiena bibishipa mu mukuna."



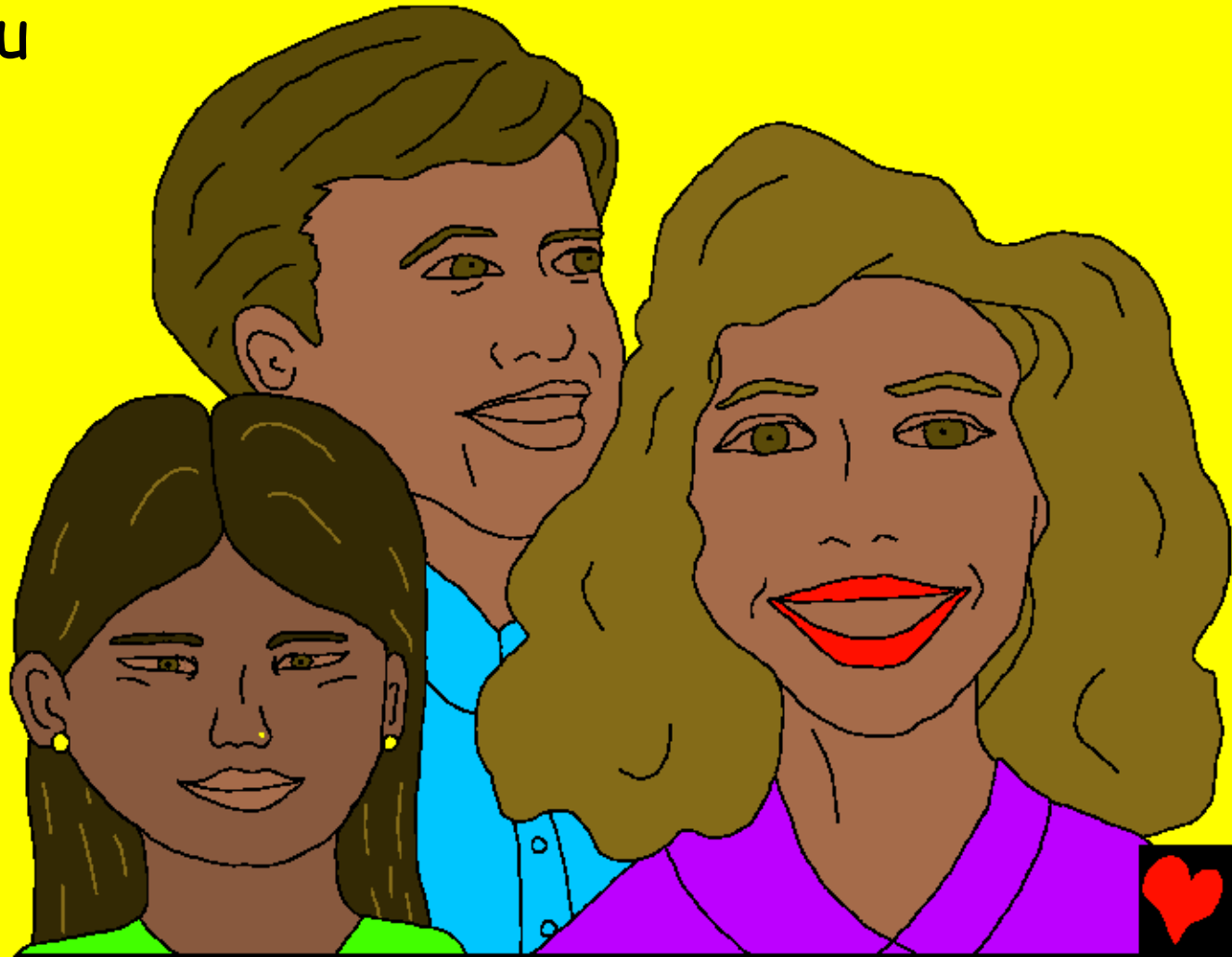
Patuakatangila pa muaba, tuvua ne kumone ne kudi bintu bidi kabidi mu diulu. Kakuvua meyi ya tshiji kunvuijika. Kakuena muntu ne buiminyi anyi nvita. Kakuena biibi bikanga ne bikuvu, bualu kakuena bivi mu diulu. Kakuena bena mashimi, badi ne bua kushipa, baloji, anyi binga mbatu babi.



Mu diulu mua Nzambi kakuena  
binsonji kabidi. Imue misangu,  
bantu ba nzambi bavua badila  
bua kanyinganyinga pa buloba.  
Mudiulu, Nzambi neakupule  
binsonji bionso.



Kakuena lufu mu diulu, nansha. Bantu ba Nzambi  
ne bakala tshiendelela ne mukalenge. Kakuyi  
tunyinganyinga, ne masama, ne makenga.  
Muntu onsu udi ne  
disanka mu diulu  
tshiendelele.



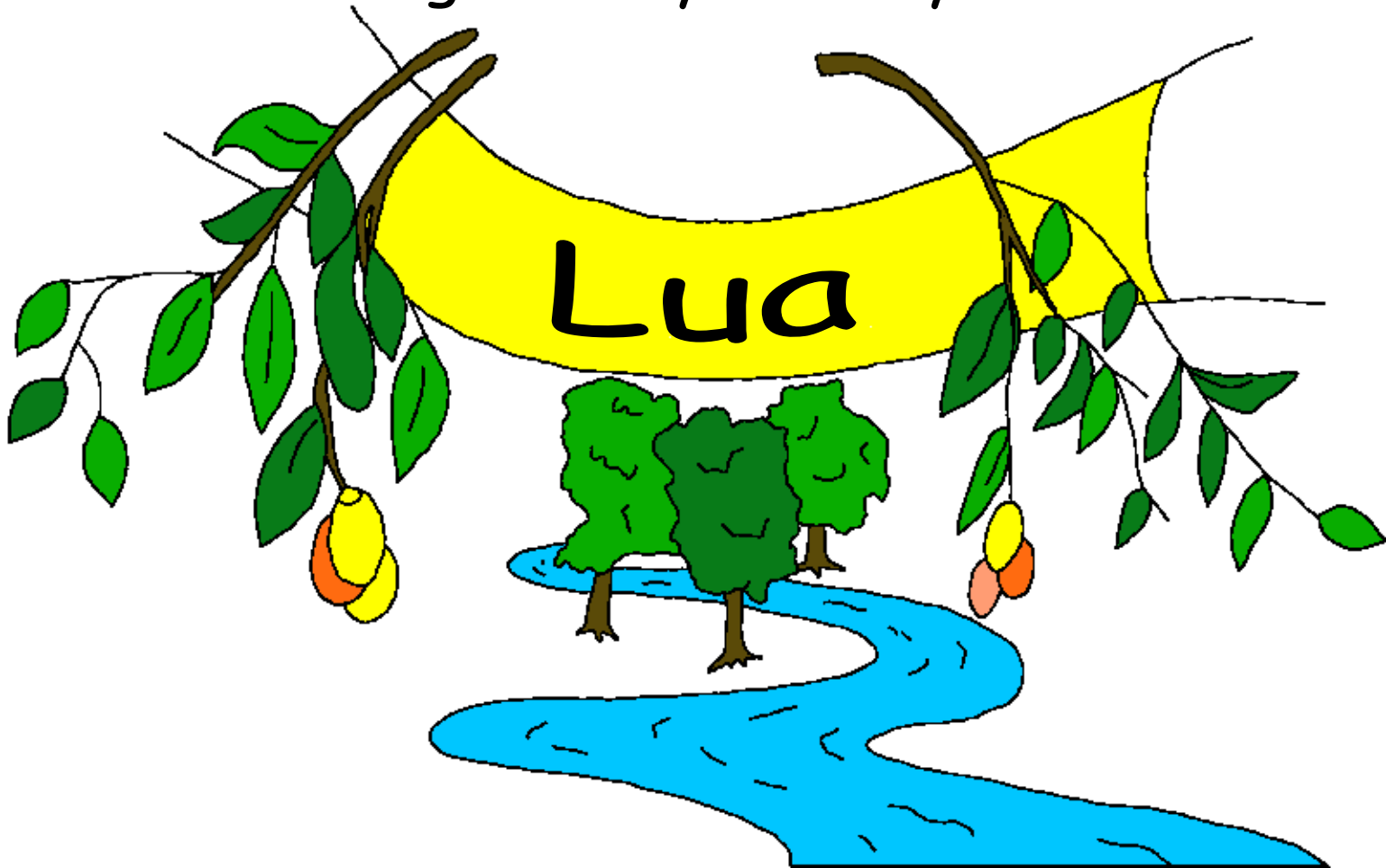


Tshivua tshipite bionso, Diulu didi bua bansongalume ne bansongakaji, (ne bakulakaja papu) bavua mua kutekemena mu Yezu Kristo musungidi wabu ne kumutumikila yeye mukalenge wabu. Mudiulu mudi mukanda ne dina mukanda wa muoyo wa nuana wa mukoko. Idi mutule ne mena ya bantu. Udi mumanya mena ya banganyi idi bafundemu? Bantu bonso badi beyemena Yezu.

Dina diebe didimu anyi?



Meyi ya ndekelu ya mu bible bua diulu idi ne dibikila dilenga. Nyuma ne mukaji musela badi bamba ne, 'Lua' lekela udi unvua wamba 'Lua' ne muntu yonso udi ne nyota alue. Muntu yonso udi musue angate mâyi a muoyo tshianana.



Diulu, lubanza lulengele lua Nzambi

Muyuki wa mu diyi dia Nzambi, bible

bidi mu

Yone 14; 2 Kolinto 5;  
Buakabuluibua 4, 21, 22

"Kubuela kua meyi yeba ne kukupesha bukenka."  
Misambu 119:130



Ndekelu



Muyuki wa mu mukanda wa  
Nzabi ewu uji utwambila malu ya Nzambi wetu  
mulengele uvua mutufuka udi musue bua wewa umumanya.

Nzambi udi mumanye ne tuakuenza malu mabi, ubikila ne bubi (mpekatu). Dinyoka bua mpekatu didi lufu. Kadi Nzambi udi mukunanga bikole yeye kutumaye muanende, Yezu, afue ku nkuluse ne kunyokibua bua bubi bueba. Nunku Yezu kubika ku lufu ne kubandaye mu diulu! Bu udi ne ditabuja mu Yezu ne kumulomba yeye bua akufuila lusa bua bubi bueba, yeye ne akufuila lusa. Yeye ne alue ne kuikala ni wewe, ne wikale nende tshiendelele.

biwitabuja bulelela ebu, ambila Nzambi ne:  
Yezu wetu, Ndi ne ditabuja ne udi Nzambi, ne kulua muntu uvua mufue bua mabi yanyi, udi ne muoyo mpindieu kabidi. Bualuse luaku mu nsombelu wanyi ne fuila koku lusa bubi buanyi, bua mpete nsombelu mupiamupia mpindieu, palua dituku dimue kuikala nebe tshiendelele. Ngambuluisha koku bua kukutumikila ne kuikala ne muoyi bu muaneba, Amina.

Bala mukanda wa Nzambi dituku dionso! Yone 3:16

