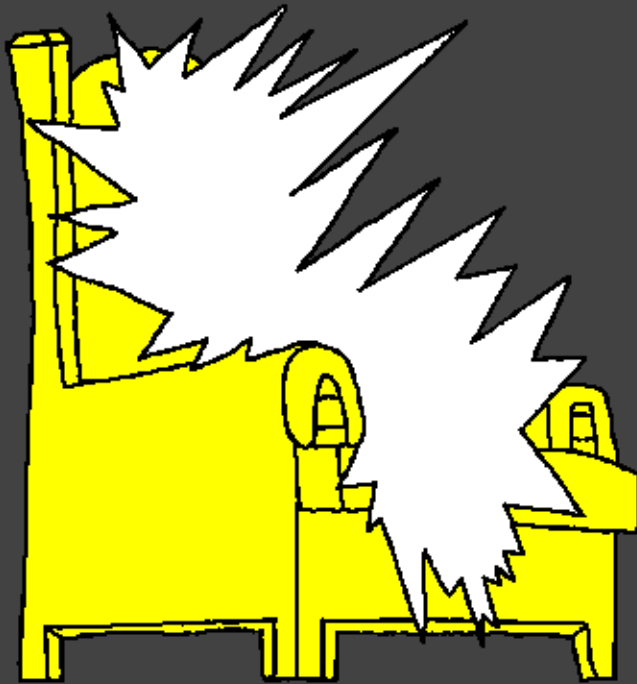


Gidra@ko la@git^ Baibel  
Sasapr@aocic^



Sermare,  
Isorak^  
monj#  
or@ak^



Olok<sup>^</sup> ic<sup>^</sup>: Edward Hughes

Phen kathako hudisic<sup>^</sup>: Lazarus; Alastair Paterson

Atan\$ic<sup>^</sup>: Sarah S.

Torjomayic<sup>^</sup>: Samuel Hasda

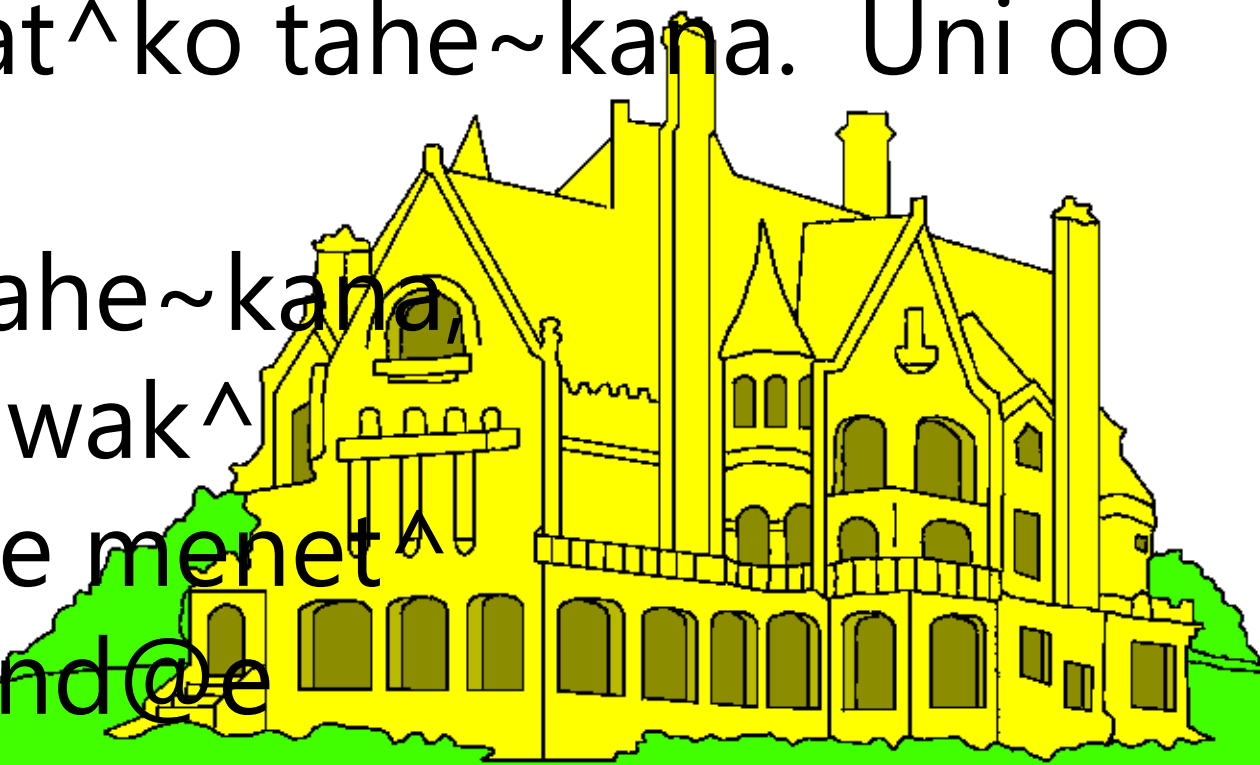
Chapa od@ok: Bible for Children  
[www.M1914.org](http://www.M1914.org)

©2020 Bible for Children, Inc.

License: Noa golpo do copy arem print dar@eak<sup>^</sup>a,  
menkhan a@khrin# do bam a@khrin# dar@eak<sup>^</sup>a.



Tinre Jisu do dha@rtireye tahe~kana  
unre uni do ac^ren celako serma raj  
reak^e la@iat^ko tahe~kana. Uni do  
onae  
metat^kan tahe~kana,  
"In#ren Babawak^  
Or@ak^," Are menet^  
tahe~kana ond@e

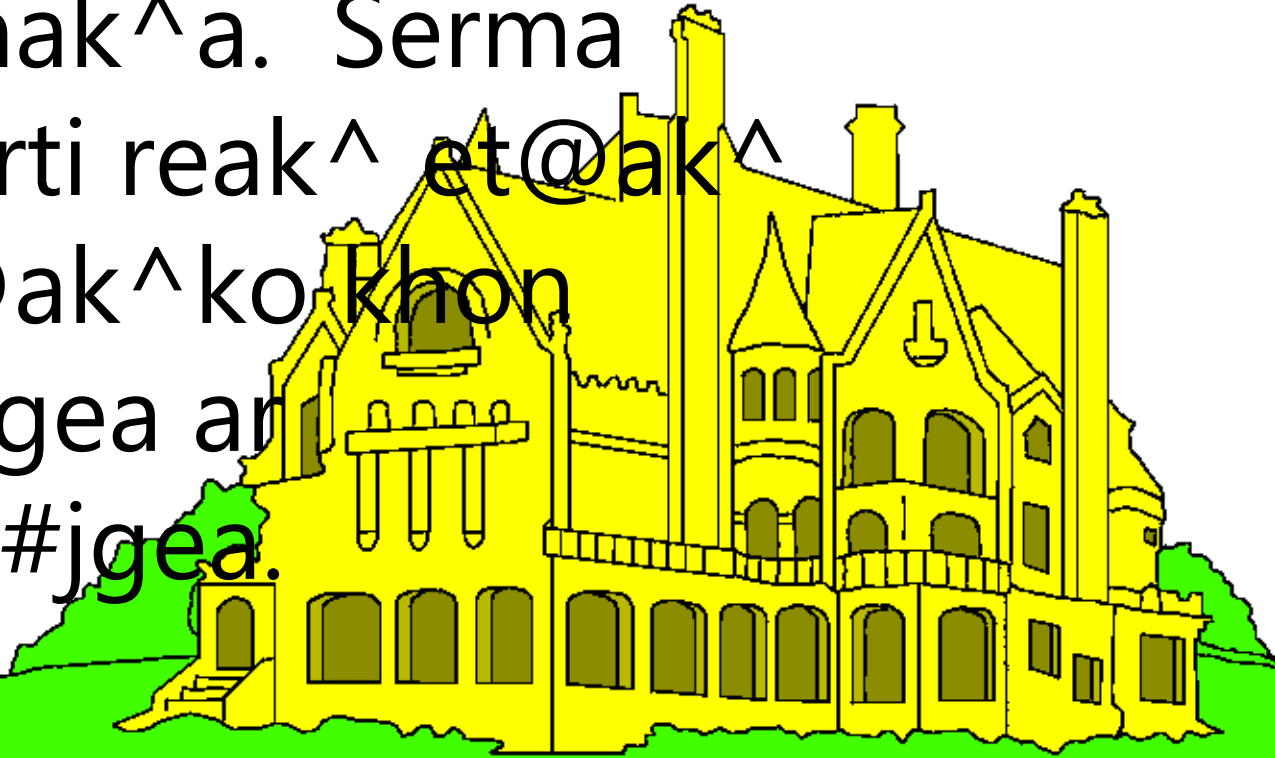


do aema jaegako menak^a.



Ond@e do a@d@i uta@r tahe n jaega  
ar mon#j

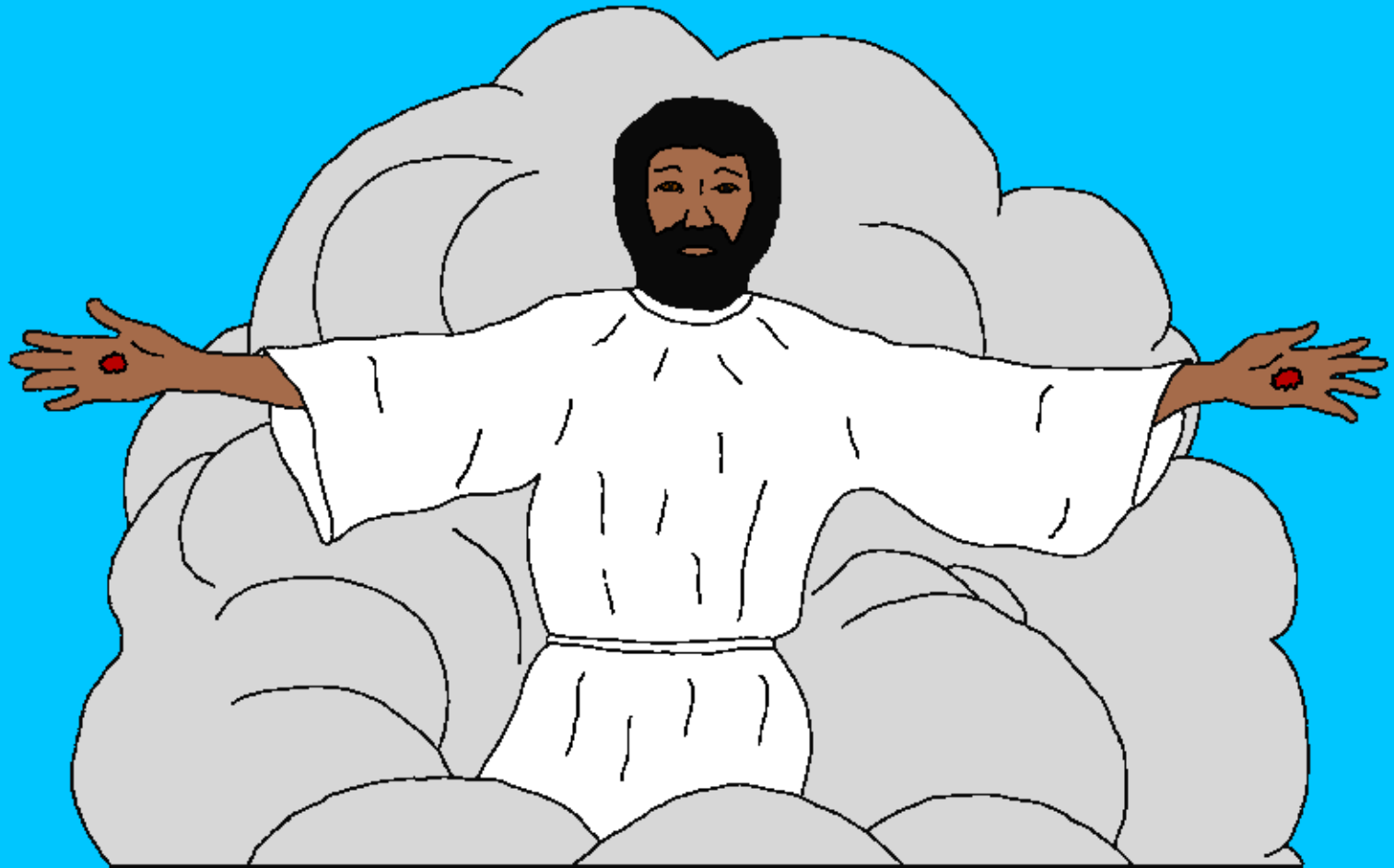
jaegako menak^a. Serma  
raj do dha@rti reak^ et@ak^  
et@ak^ or@ak^ko khon  
ho~ maran\$gea ar  
a@d@i mon#jgea.



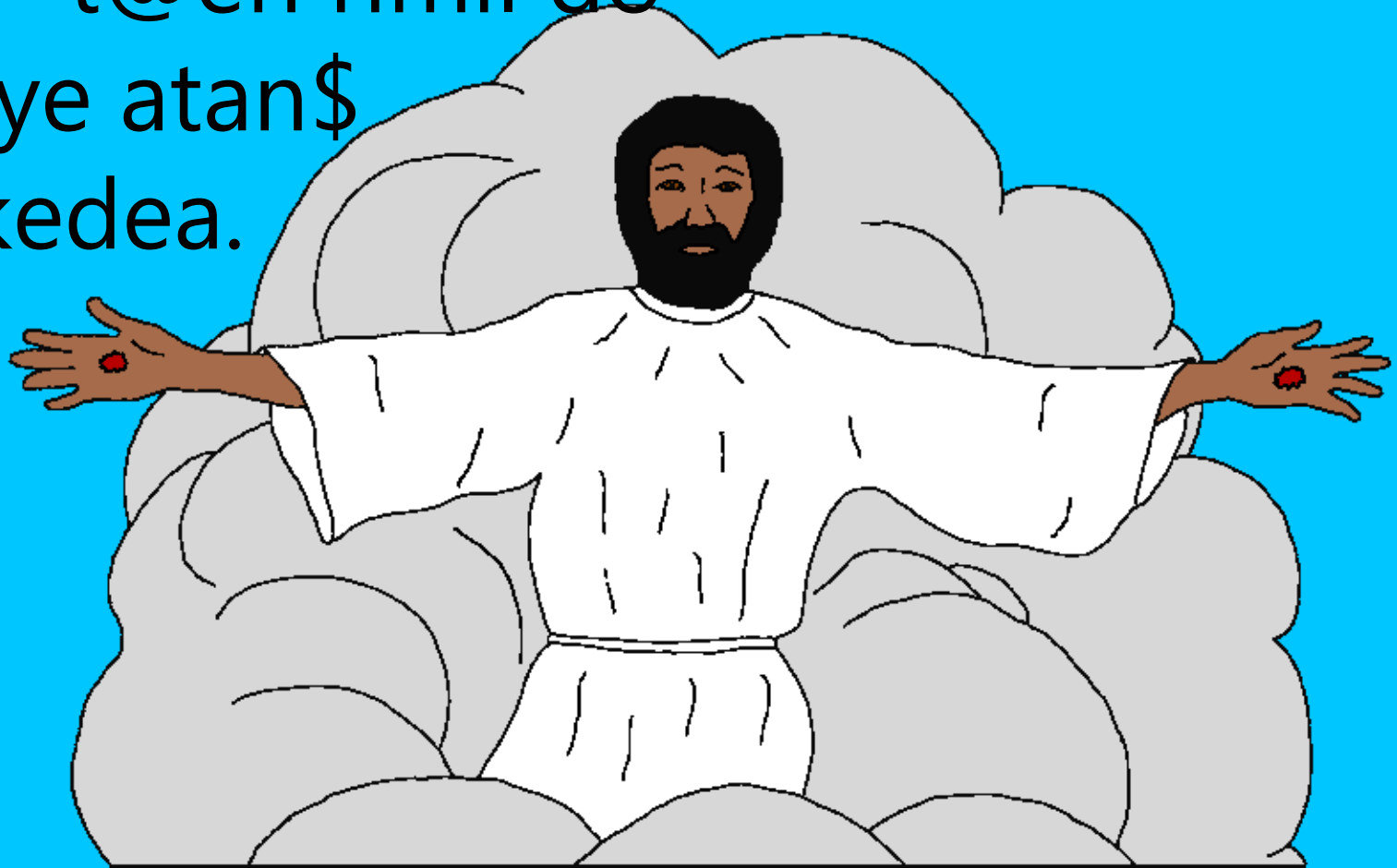
Jisui metat^koa, "In# do ape la@git^  
jaega tear in# calak^ kana. Ar  
calaokate ape la@git^ jaegan#  
sapr@ao lekhan, in# do arho~n#  
rua@r@ hijuk^a ar in#  
t@henin# atan\$  
idipea."



Jisu do goc^ko khon beret^  
rua@r@ tayom sermateye  
rakap^ena.



Ar tinre ac^ren celakoko  
horhoyedekan tahe~kana unre uni do  
cot@teye rakap^ ocoyena, ar  
mit^t@en rimir do  
uniye atan\$  
idikedeia.



Tinre, Isa@iko do Jisuko disa@yea

unre

Jisu do gok^ak^ lekae rua@r@

hijuk^a are

idikoa. Jisui meneda, In# do

usa@ragen# rua@r@ hijuk^a,

PROBHU TULUC^

BON

TAHENA

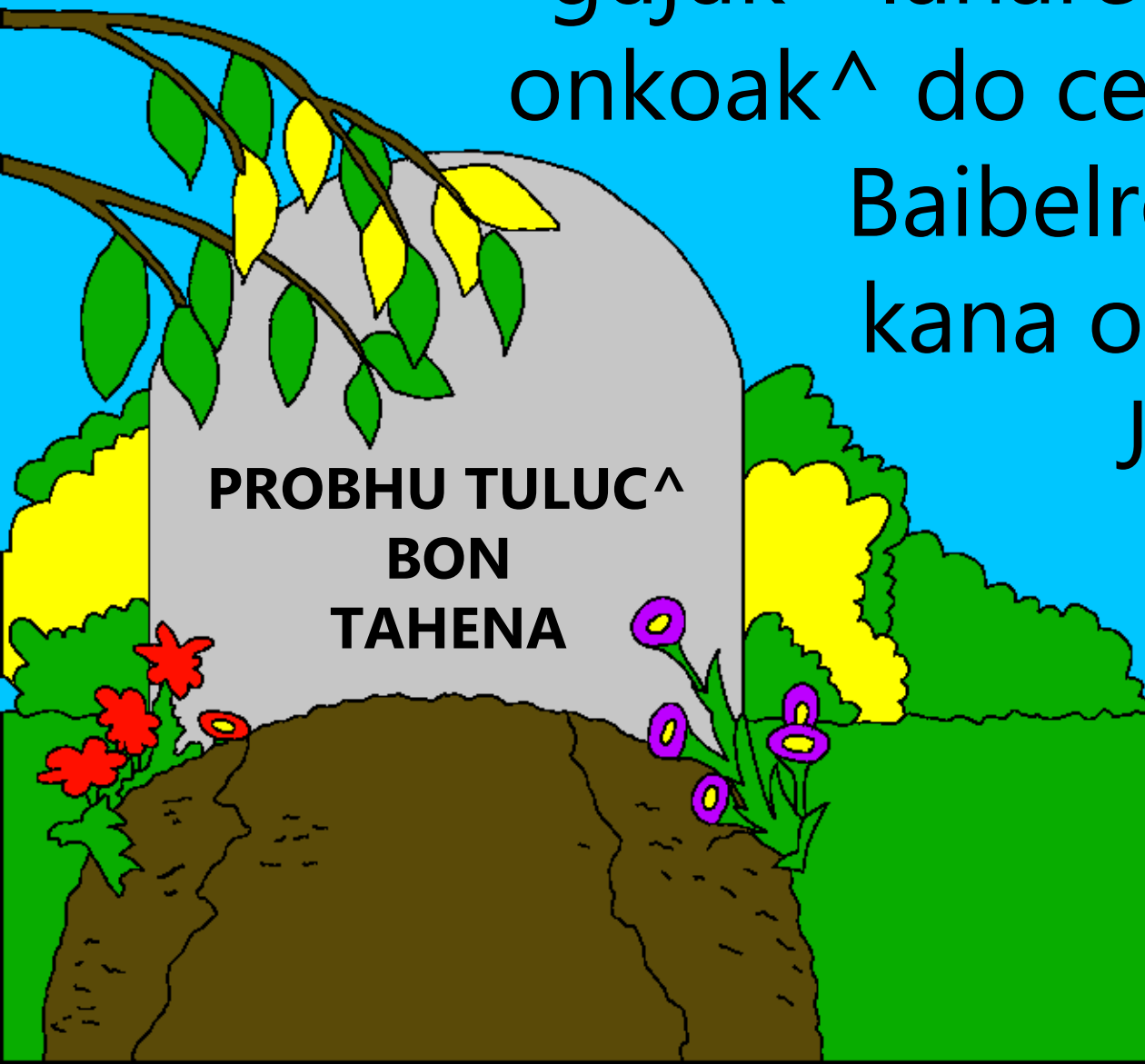
one tinre hud@in#ak^ko

atan\$ok^.

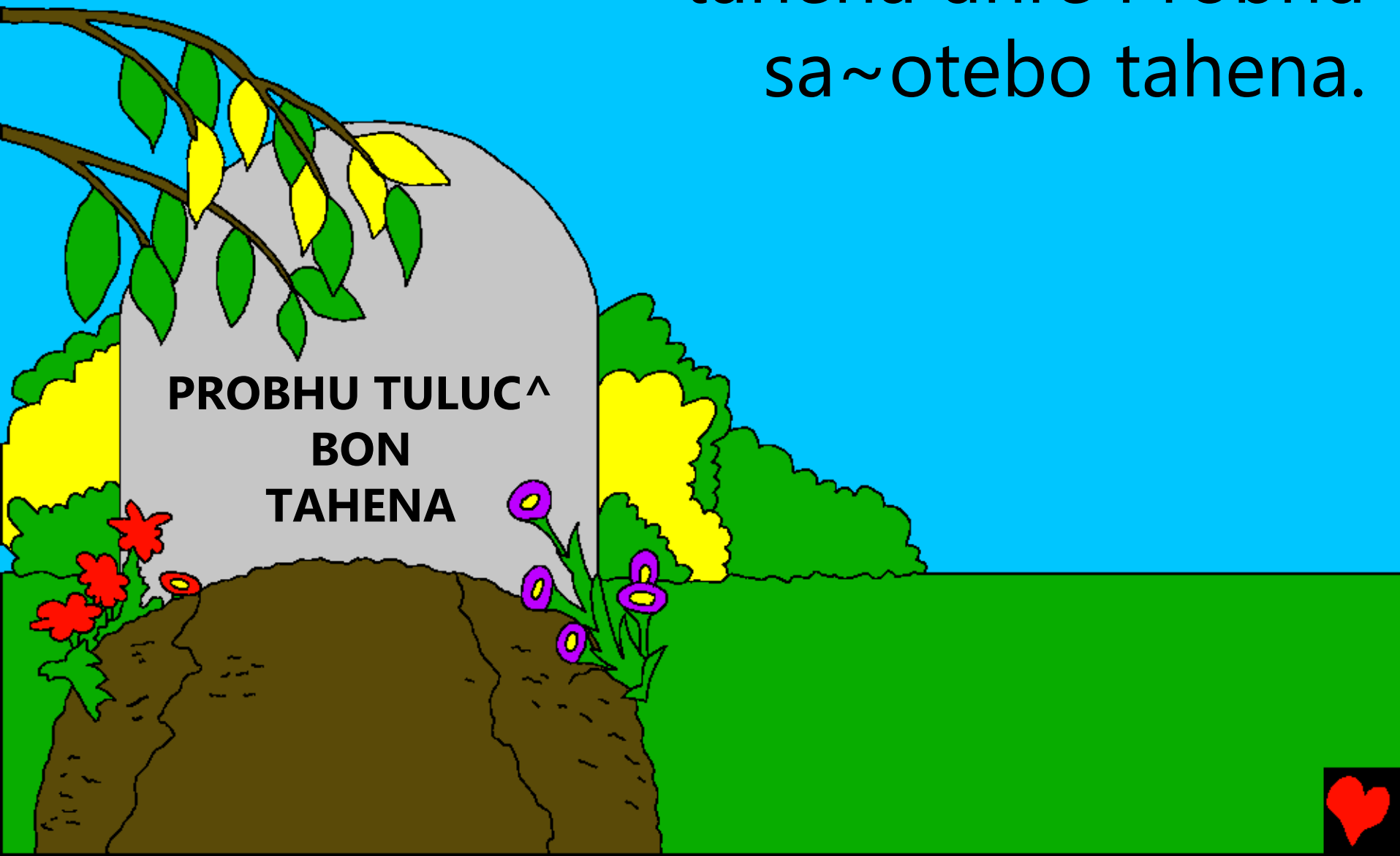




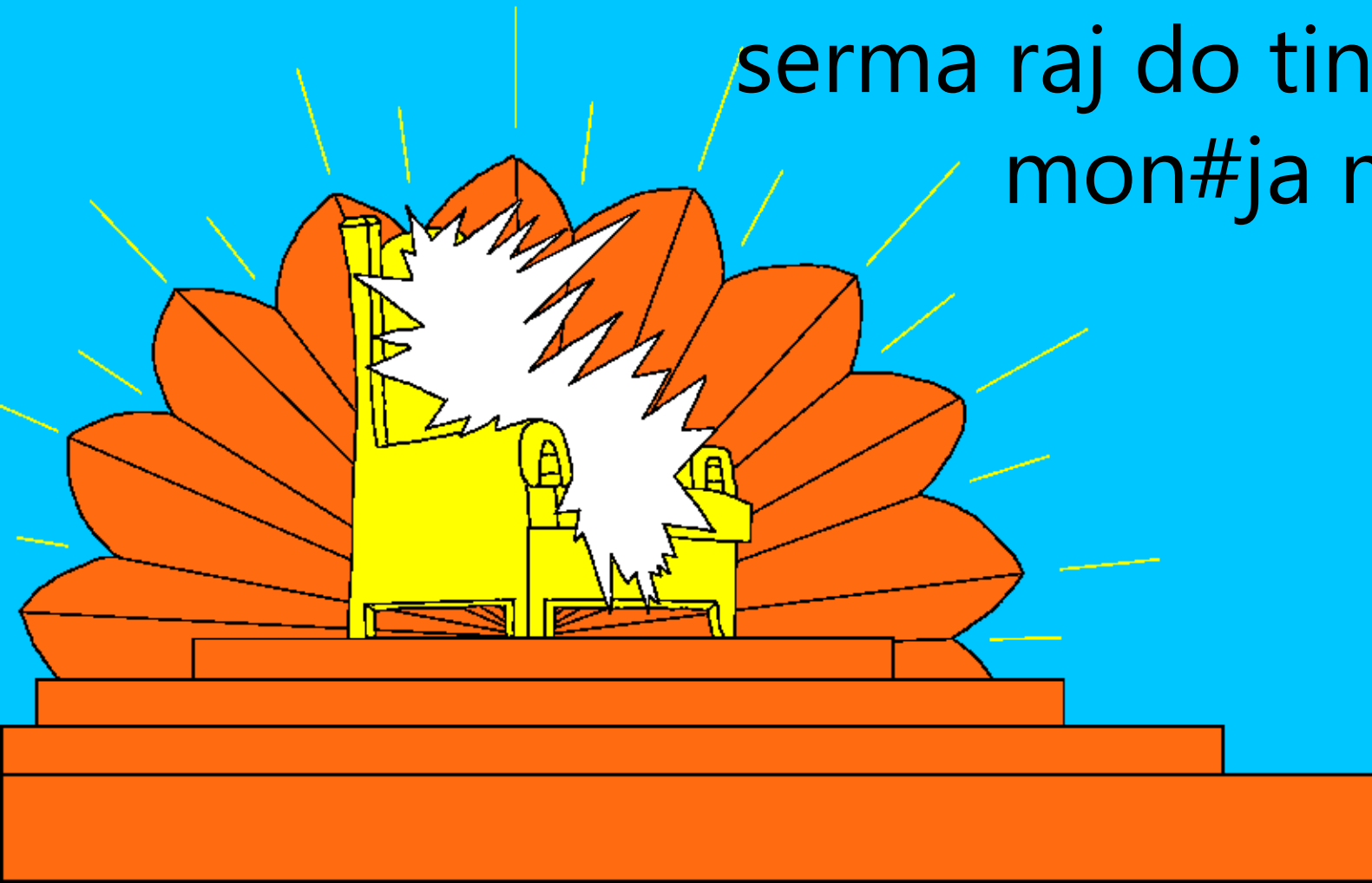
Menkhan okoeko isa@i do Jisu  
gujuk^ lahareko goc^ akan  
onkoak^ do cet^ hoyok^ a?  
Baibelreya metabon  
kana onko do sojhe  
Jisu sa~oteko  
calak^ a.



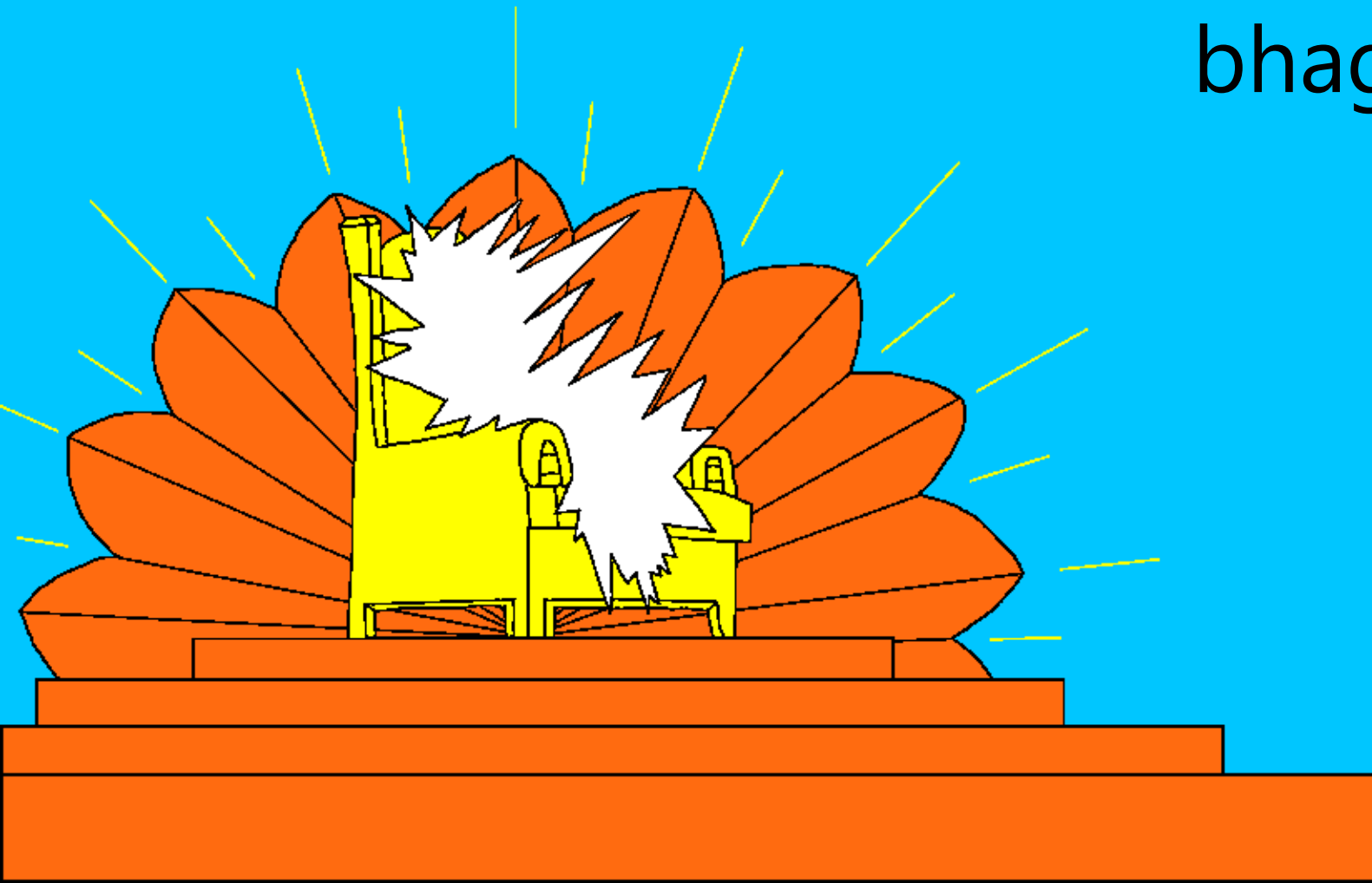
Abo do tinre hor@more babo  
tahena unre Probhu  
sa~otebo tahena.



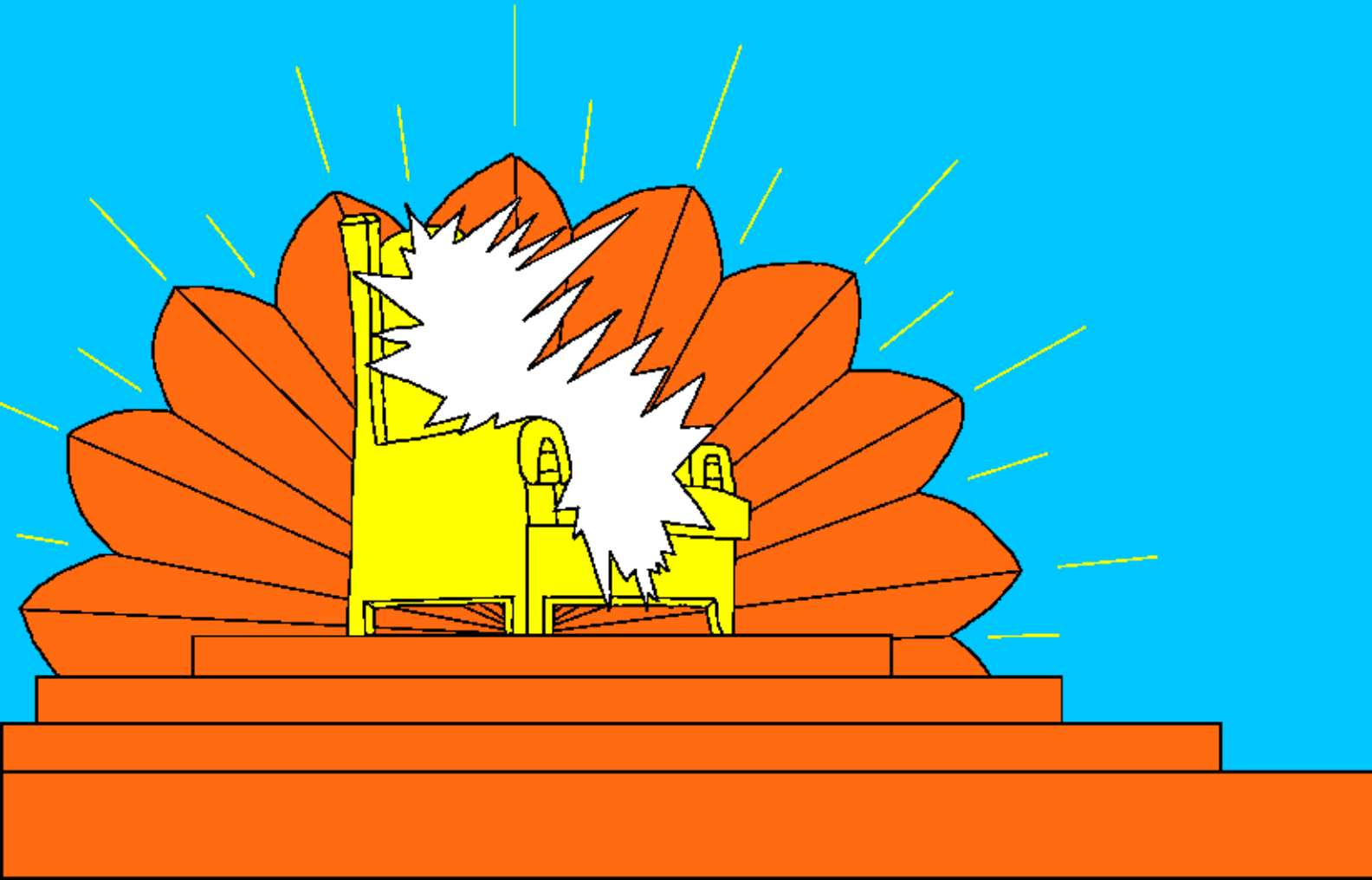
Johan t@hen sodorok^, Baibel reak^  
muca@t^ uta@rak^ puthi do, aboe  
la@i abon kana  
serma raj do tina@k^  
mon#ja mente.



Ona do a@d@i mon#jgea, ar  
sermare Isorak^ or@ak^te  
calak^ hor ho~  
bhagegea.



Isor do joto jaegarege menaea,  
menkhan uniak^ sin\$gha@son  
do sermarege.



Sermare god@etko ar et@ak^ko do  
Isorko sewawae kana. Ona ia@te  
Isorren sanam hor@ko  
tinreko gujuk^a unre  
onko do  
sermateko  
calak^a.



Onko do Isorko or@he~  
seren#aea arko sarhaoea.

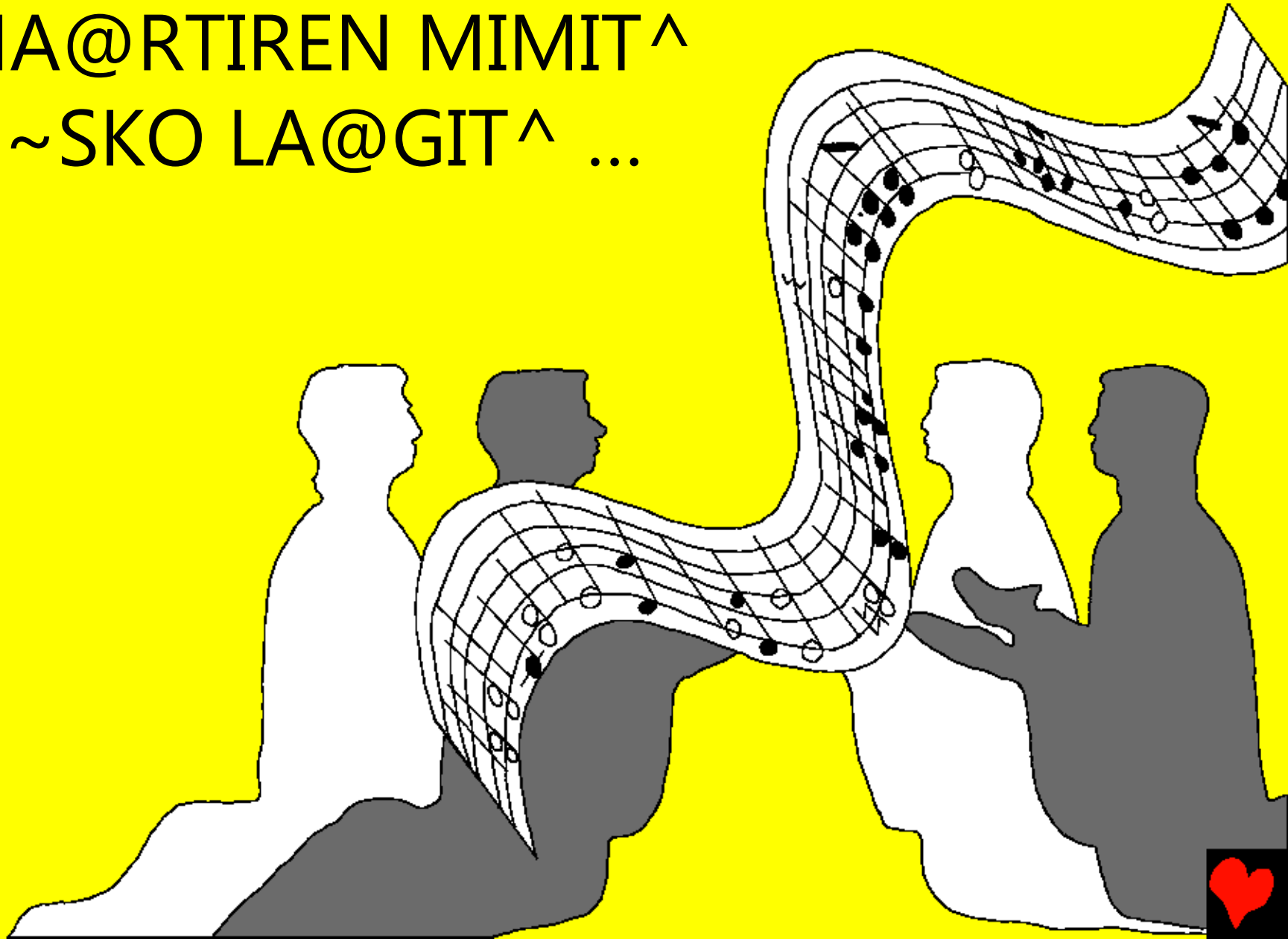
Nond@e oneko seren#et^kan

ona reak^ thor@a katha

menak^a:



AM DO AMAK^ MAYAMTE  
DHA@RTIREN MIMIT^  
BO~SKO LA@GIT^ ...





... RAJOST@IM  
BENAO AKADA AR  
ISOR REN NAEKEM  
HOEAKANA. (Johan  
sodor. 5: 9)



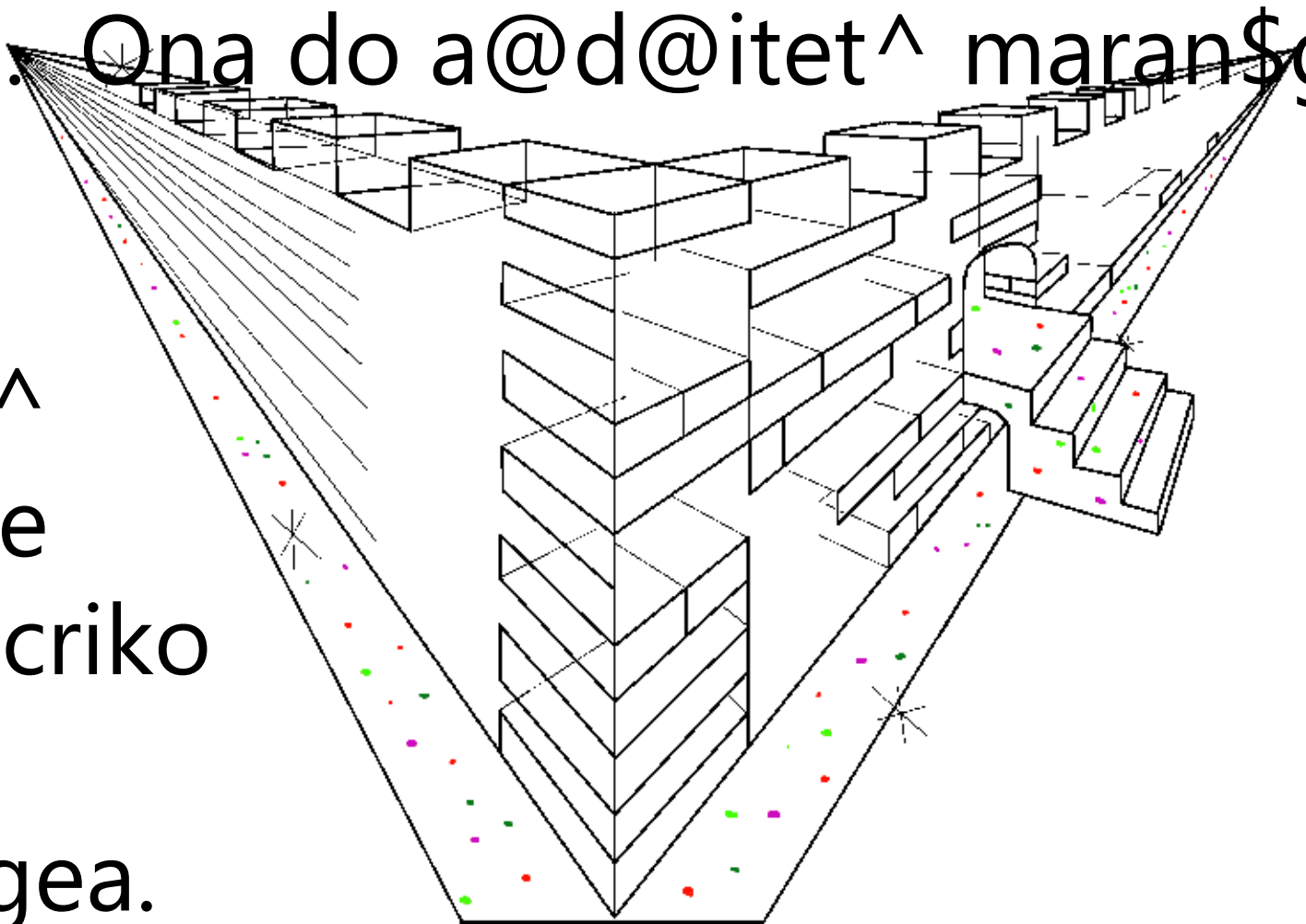
Baibel reak^ muca@t^ sec^re serma  
rajre "Nawa Jerusalem " reak^e la@i  
abon

kana. Ona do a@d@itet^ maran\$gea  
ar

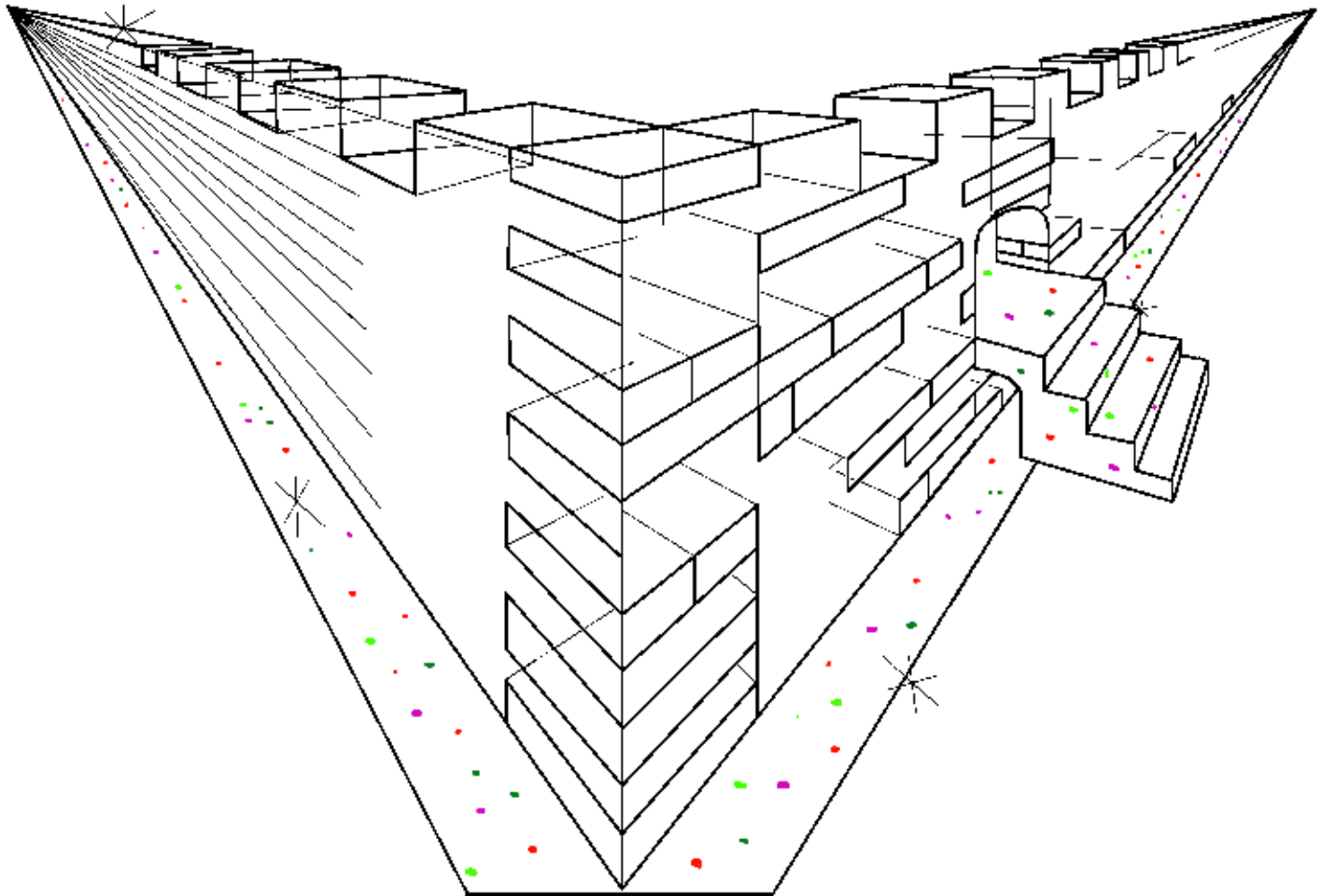
ona  
reak^  
bahre

pa@criko  
ho~

usulgea.



Ar pa@cri do damanak^  
dhirikote, ar shapa ka~c  
reak^ kana.

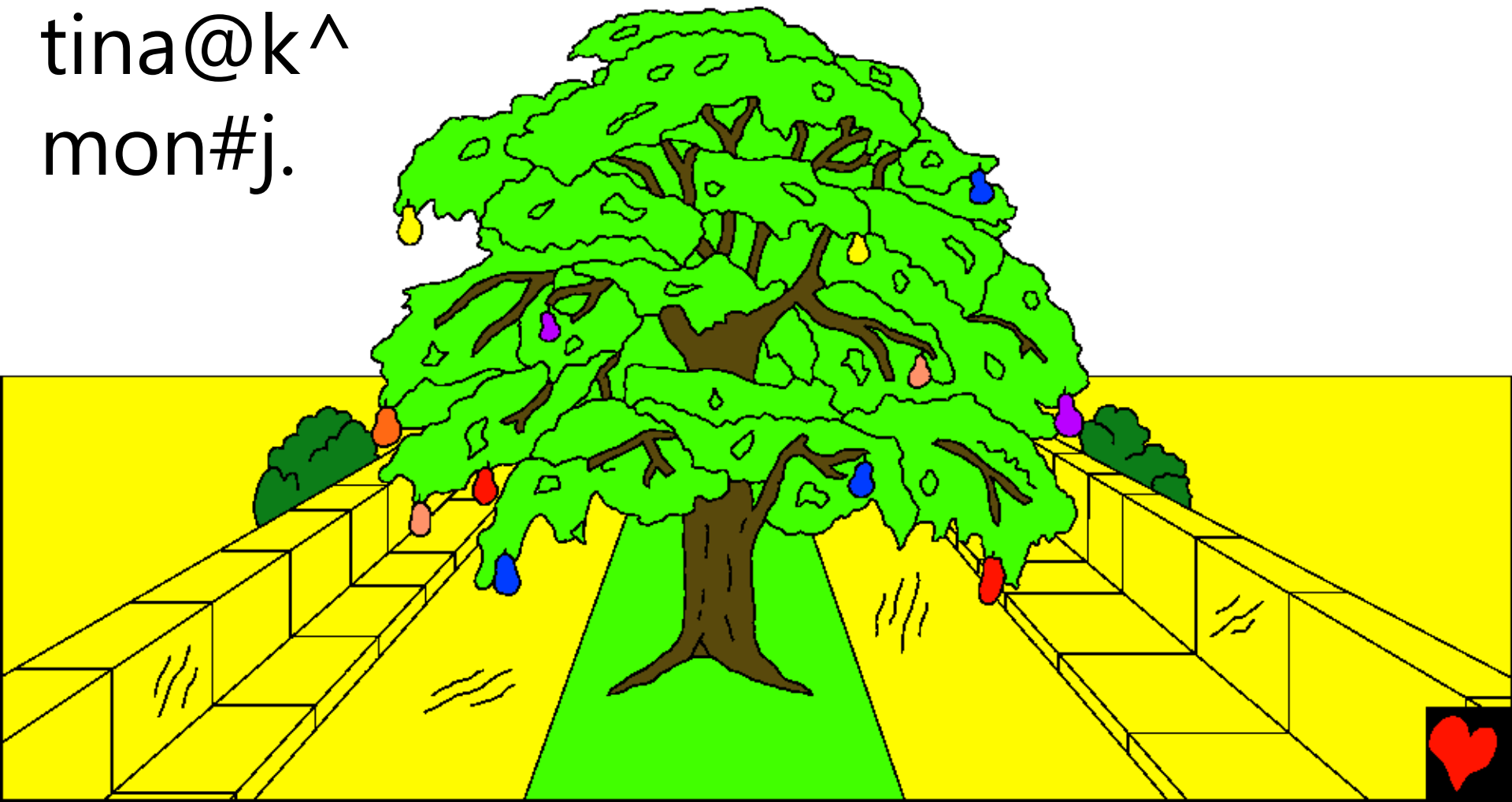


Pa@cri reak^ rehet^ do sanam lekan  
damanak^ ar mon#j mon#j dhirikote  
ba@isa@u menak^a. Ar joto dua@r  
do mimit^ got@en ma@nikte

tear  
akana!



Onako ma@nik reak^ dua@r do  
tisho~ ban\$ sin#ok^a. Delabon ona  
ber@haete bon n#el a@curma...  
tina@k^  
mon#j.

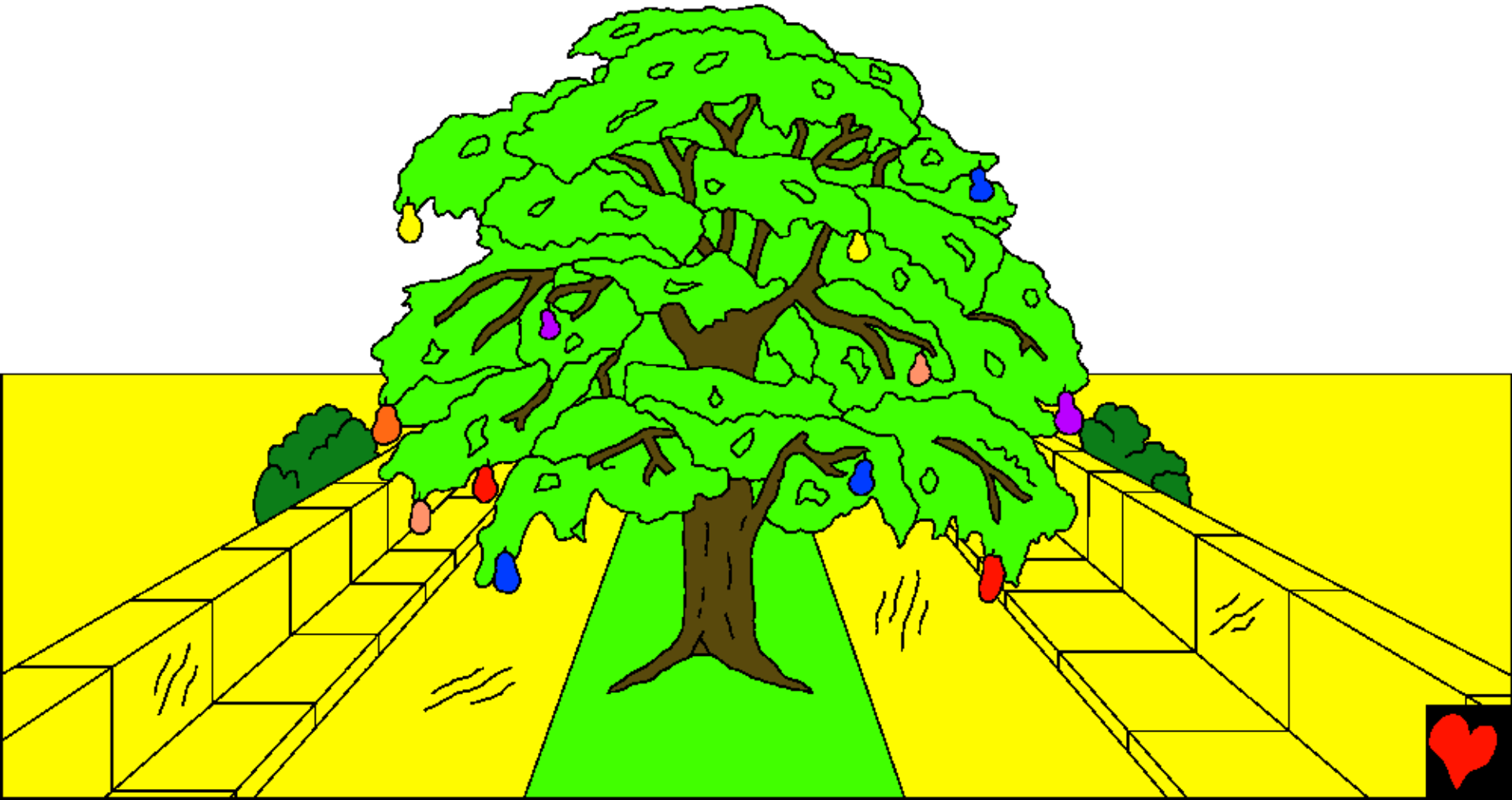


Serma reak^ rajost@i bhitri ho~  
mon#jgea.

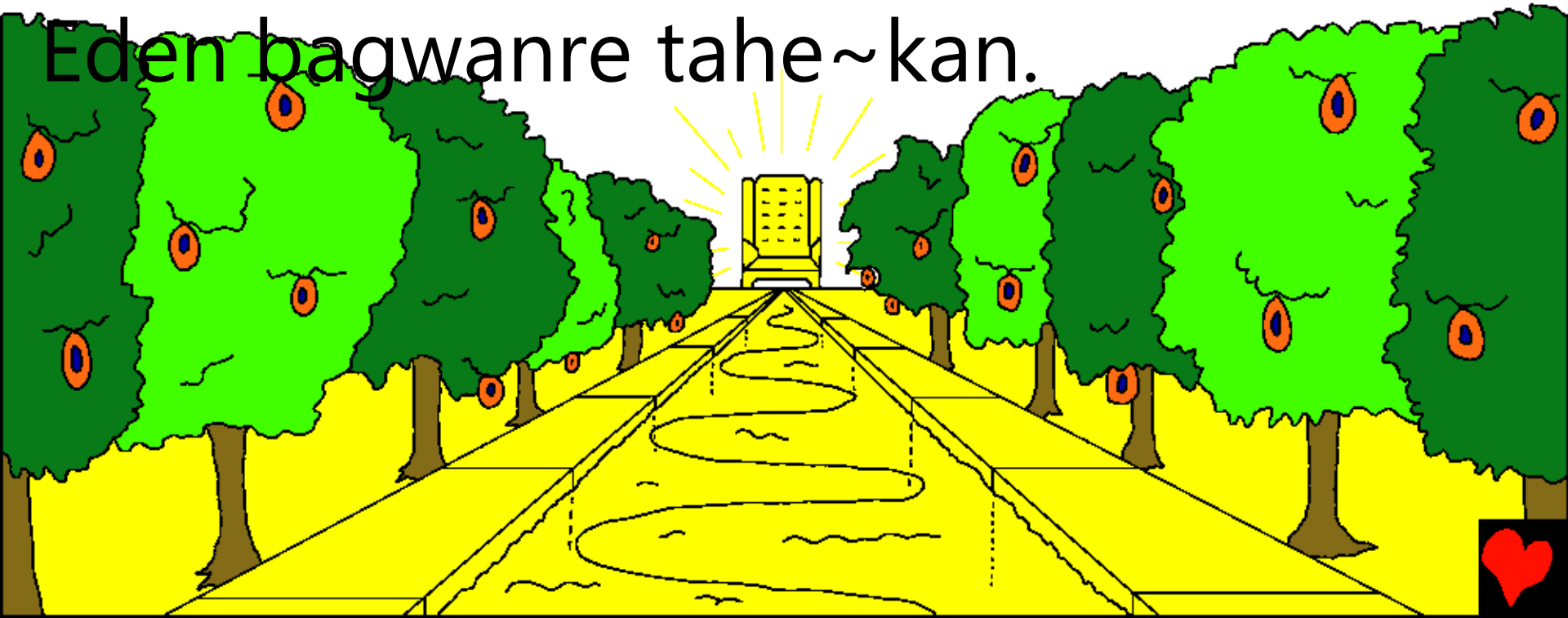
Ar nagraha do kha@t@i sonate benao  
akana one okat@ak^  
do sapha  
ka~c leka  
n#elok^kan.



Ar ona reak^ horko ho~ sonate  
benao akana.



A@d@i mon#j, rir@im gad@a ar  
jiwet^ dak^ko do Isorak^  
sin\$gha@son khon a@tu od@ok  
hec^akana. Ar ona banar sec^re do  
jion dare menak^a, one okat@ak^ do  
Eden bagwanre tahe~kan.

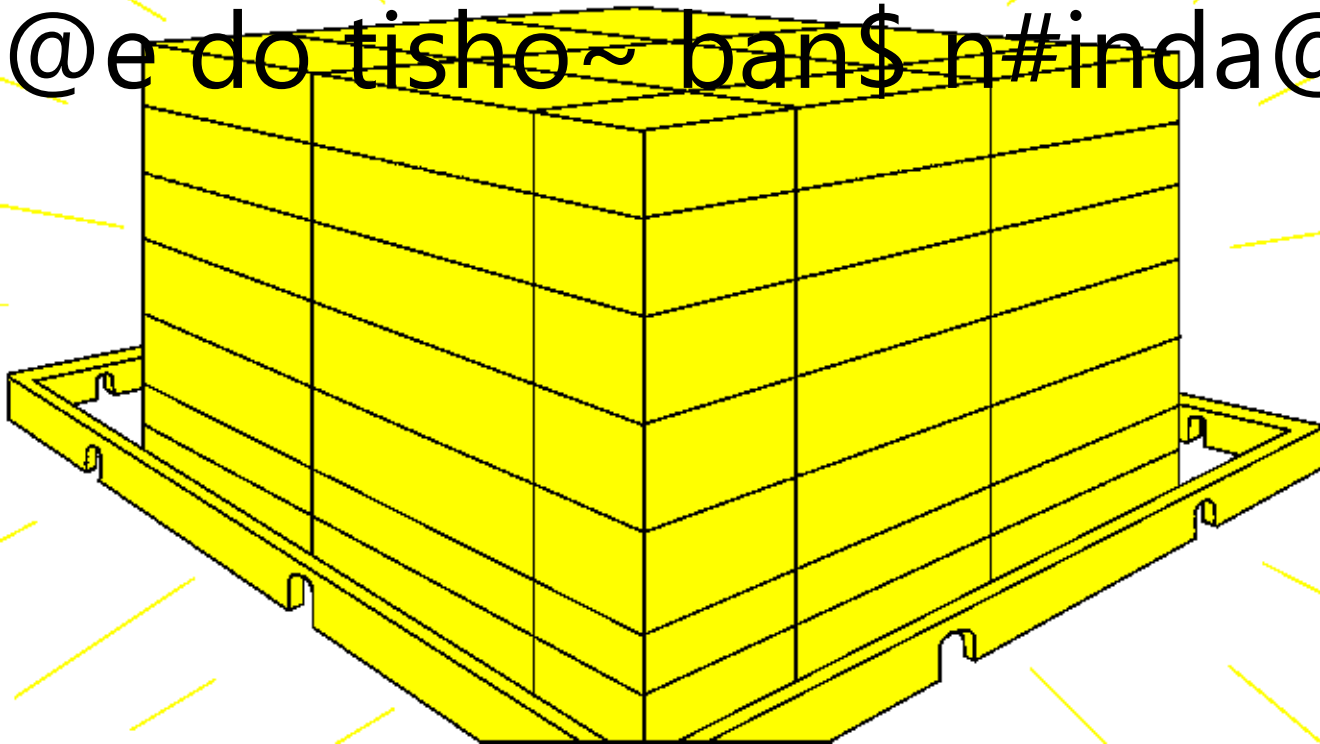




Noa dare do a@d@i bhagegea. Ona  
do gelbar got@en jo jok^kana ar  
gelbar candoge. Ar ona dare reak^  
sakamte do ja@t ja@trenko bogek^  
kana.



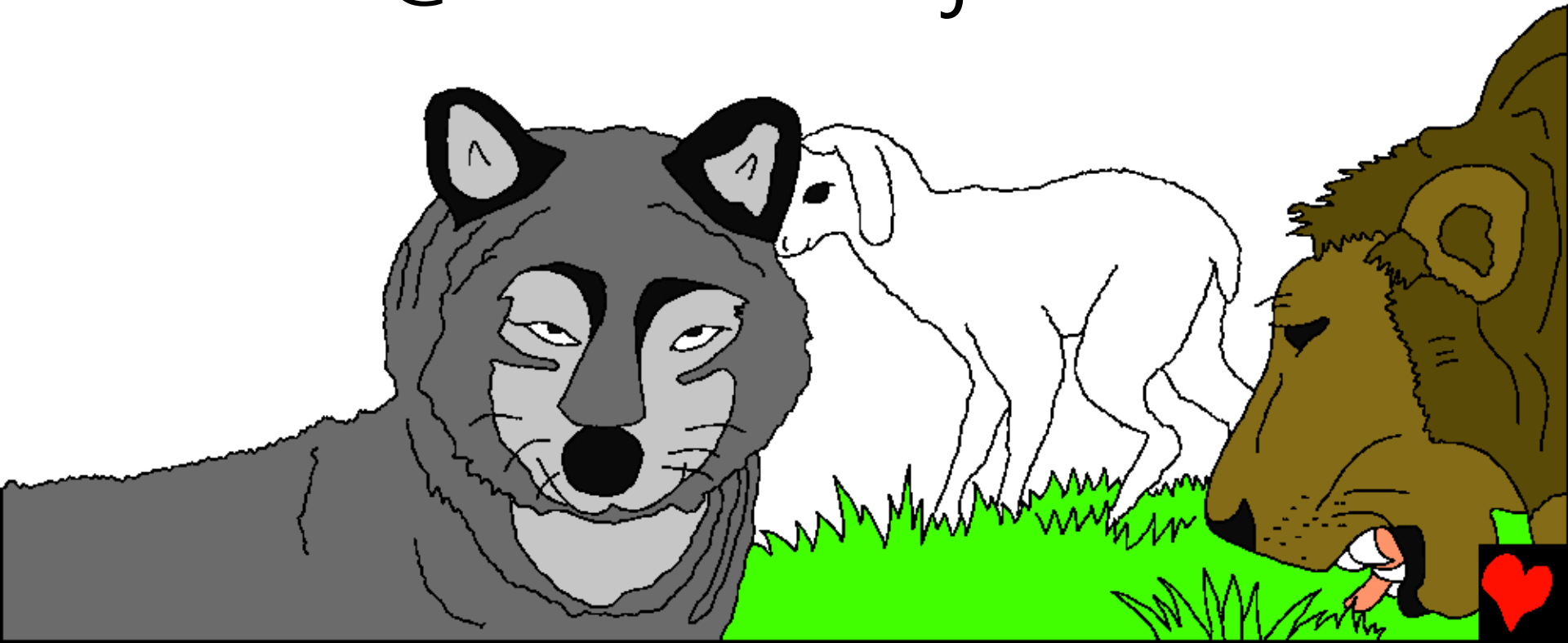
Serma rajre sin# cando ar n#inda@  
cando  
reak^ marsal do ban\$ ja@rur@a.  
Ond@e do Isor ac^tet^ge t@honoke  
sodorte mon#j marsale emok^a. Ar  
ond@e do tisho~ ban\$ n#inda@k^a.



Unre janwarko ho~ sermare et@ak^  
et@ak^ko tahena. Onko do sanam  
gha@ri@c^ren  
gateko hoyok^a. Ta@rup^^ ar  
bhid@i  
do mit^ tekin a@tin#a.



Ar dar@ean dha@cri kul ar d@an\$gra  
ho~ mit^tekin joma. Probhui  
meneda,  
"Onko do in#ak^ sonot burure  
bako rua@k^a ar bako josaok^a."



Ale do a@riba@ndhikatele n#elkeda  
arle la@ieda

je, serma rajre nonkanak^ko do

ba@nuk^a.

Ond@e do

ren\$gec^ho~

ba@nuk^a

ar tetan\$

ho~

ba@nuk^a.

Ond@e



Dua@r do tisho~ ban\$ sin#ok^a, ente  
ond@e  
do ja~ha~n komb@o ho~  
ba@nuk^koa. Ar  
er@e roror@ko ho~  
ba@nuk^koa  
khunia@hiko  
ho~ ban\$,  
ond@e do  
had@rap  
hor@ ho~





Sermare Isor sa~ote  
okoeko taken onko do  
me~t^dak^ ho~  
ban\$ jorok^takoa. Isorren  
hor@ko do akoak^ duk  
ia@te  
thor@a gha@r@ic^  
la@git^ko raga.  
Menkhan sermare, Isor  
do sanamkoak^  
me~t^dak^



Sermare gujuk^ do ba@nuk^a.

Isorren

hor@ko do jaejug Isor tuluc^ko

tahena. Ond@e

do ja~ha~n duk

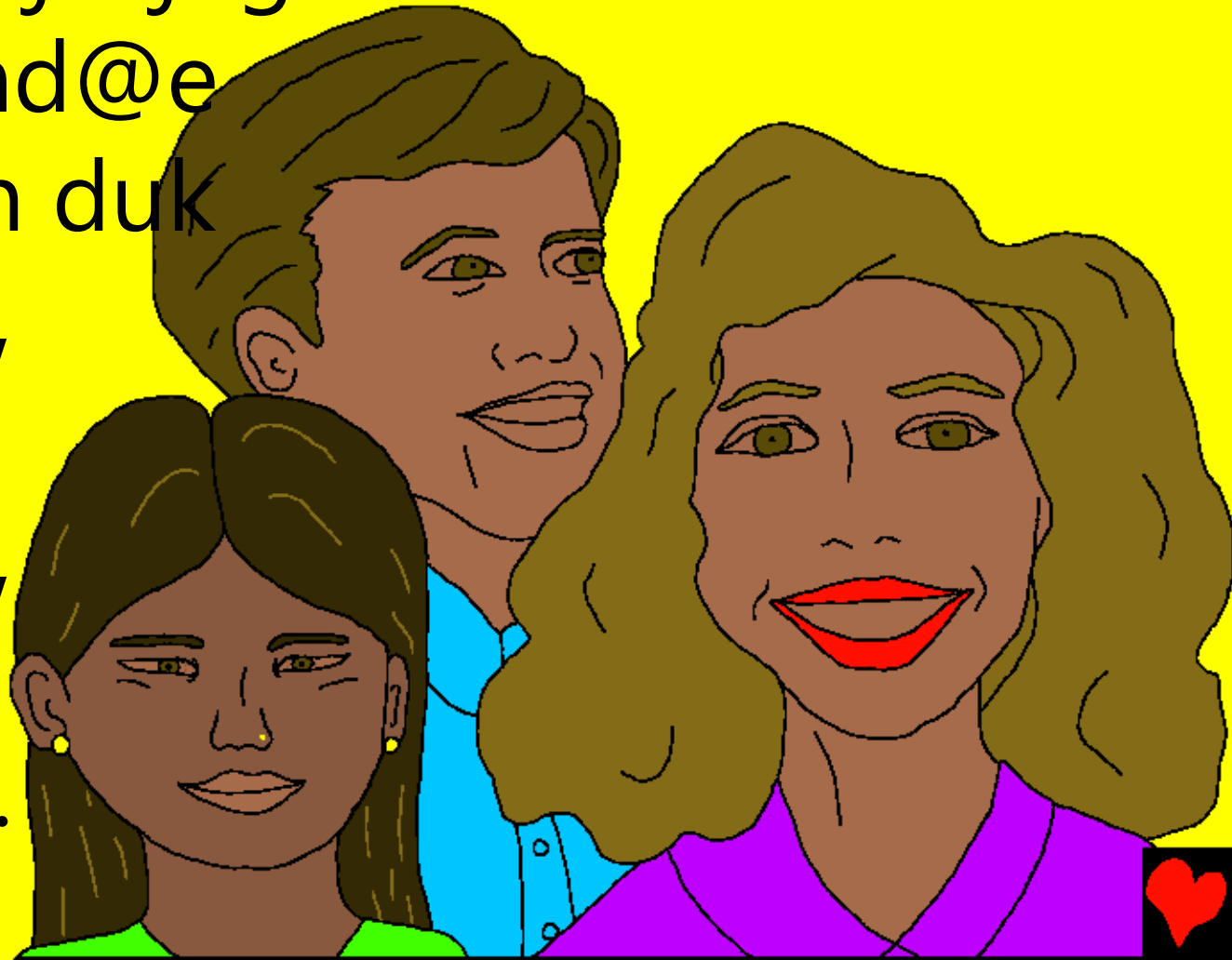
ba@nuk^a,

rak^jon\$

ba@nuk^a,

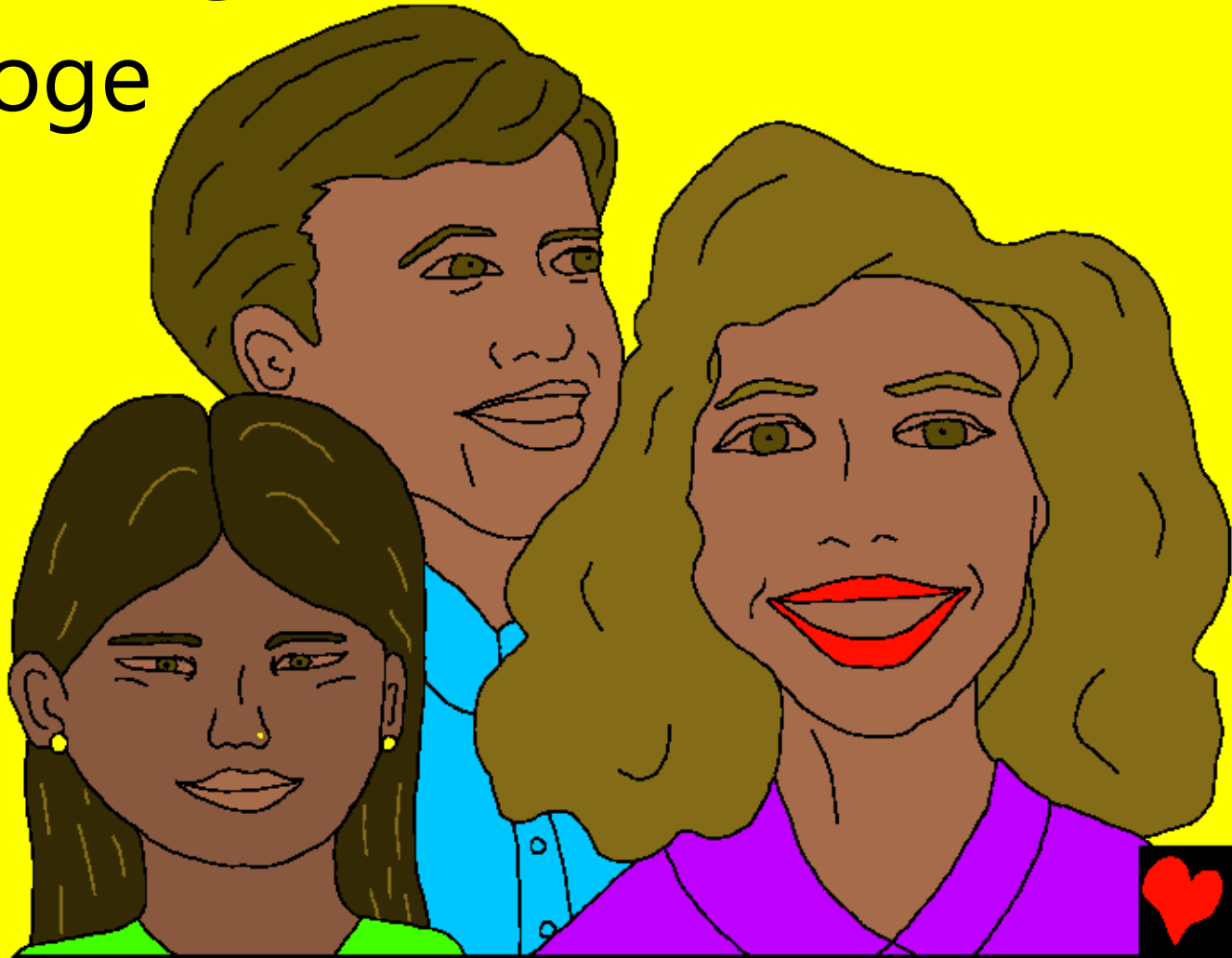
haso

ba@nuk^a.





Ond@e do rua@ ba@nuk^a, bida@  
ba@nuk^a, ond@e  
do topaho~ ba@nuk^a. Sermare  
do sanamkoge  
Isor tuluc^  
jaejug  
sukreko  
tahena.



Sanamak^ bhagegea, serma rajre  
kor@ako  
ar kur@iko (harak^kanko – ar jotoge)  
okoe do Jisu Ma@si akoren  
baban#caoic^ kanae mentek  
pa@tia@uk^kan onko  
jotoge Probhu  
doe daya  
akoa.



Sermare do mit^t@en puthi  
menak^a one  
oka do bheda@ hoPONAK^ jiwet^  
reak^ puthiko metak^kan. Noare  
do hor@koak^ pura@ n#utum  
menak^a.



Am do cet^em bad@aegea onare  
okoekoak^^ n#utum ol menak^a  
mente? Tina@k^ hor@  
do Jisureko pa@tia@u akan onko  
sanamkoak^ n#utum onare  
ol menak^a. Amak^  
n#utum onare  
menak^gea?



Baibel reak^ ses uta@rak^ katha do  
hoyok^ kana serma reak^ mon#j  
uta@rak^ neota.



"Sonot Jiu do ba@hu kur@iye  
metaekana, 'Dela hijuk^me,' Ar okoye  
an#jomet^kan 'Dela hijuk^me,' Okoe  
tetan\$edekan uni do uni t@hene  
hijuk^ma.



Ar okoe n#un#u sanayede uni do  
hec^kate jion reak^ dak^  
man\$gnateye n#u idi jon\$ma."



Sermare, Isorak^ monj# or@ak^

Baibel reak^ noa golpo do Isorak^ katha  
kana,

Noa do na#mok^a

Johan 14, 2 Corinthiko 5,  
Johan sodor 4, 21, 22

"Amak^ katha reak^ seledok^ do marsale  
emok^a."

Seren#ko 119:130





Muca@

t^



Baibel reak^ noa golpo do aboren bhage  
Isorak^ rean\$e la@i abon kana one okoe  
doe benaoakat^ bon ar One okoe do am  
rean\$ bad@ae sanayede.

Isore bad@aea abo do ba@r@ic^ak^bon  
ka@mi akada, one okat@ak^ uni do ka@iye  
metak^kan. Ka@i reak^ kur@a@i do  
gujuk^ kana, menkhan Isor do am  
nuna@k^e dula@r@et^mea je ac^ren  
hopen Jisui kolkedea, ar uni do amak^ ka@i  
ia@te krusre duke jomkeda. Jisu doe jiwet^  
rua@r@ akana ar sermateye calao akana!  
Judi Jisurem pa@tia@uk^kan khan  
and@ekhan am do amak^ ka@iko rean\$



Judim pa@tia@uk^kan khan noa do sa@ri  
kana mente, end@ekhan Isor metaeme:  
Dula@r@ia@ Jisu, in#in# pa@tia@uk^ kana  
am dom Isor kana, ar manwam hoyena ar  
in#ak^ ka@i la@git^em goc^ena ar n#itok^  
dom jiwet^ beret^ akana. Dayakate in#ak^  
jionre hijuk^me ar in#ak^ ka@iko ika@  
ka@tin# me jemon nawa jion tahentin# ar  
mit^ din am t@henin# calak^te jaejug am  
tuluc^ in# taken. Gor@owa@n# me  
ar dayawa@n#me jemon amren gidra@  
lekan#  
tahe~dar@eak^. Amen.

