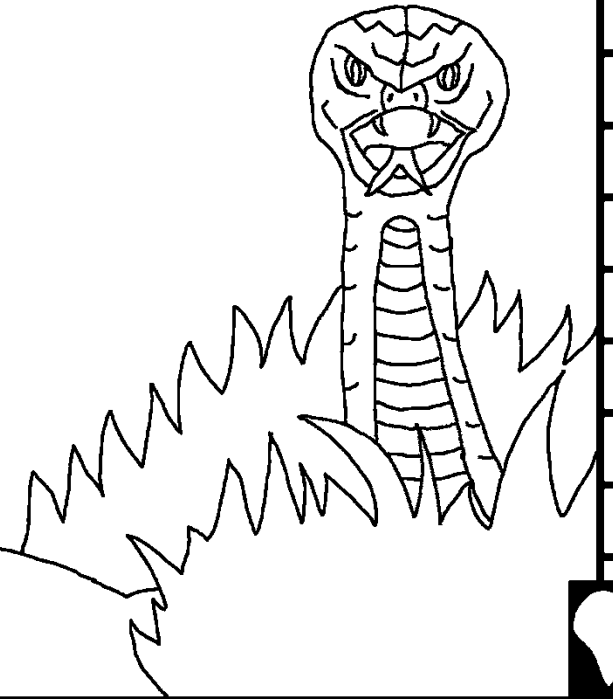


Kamb sebr songo  
wilgri

Ninsaal su-saams  
singre



Sen galsa wa: Edward Hughes

Sen vênga wa: Byron Unger; Lazarus  
Alastair Paterson

Sen remsa wa: M. Maillot; Tammy S.

Sen lebga gom biisa: [christian-translation.com](http://christian-translation.com)

Sen maana sebra: Bible for Children  
[www.M1914.org](http://www.M1914.org)

©2021 Bible for Children, Inc.

Yamb tara sore n lebg n dik kibar kanga n puiig, la ya y sen  
na n sak n da rika n koss n na bao ligd ye.



Wend n naan fa. Wend sen wa n  
naan ninsaala, pipi rao wa a Adm, a  
viina eden zeeda puga, e a paga awa.  
B daa ra bee su-noog puge. B sen n  
da be ne wende la b  
kelgd b yonga n tag  
raar ninga ...



Rè yinga wend y  
eela yamb ti y ra ri  
tissa faa gil biisi?

Waafa sen sok a Awa

la woto. La paga leoka waafa woto: "Tond  
tee n dii tiisa faa biisi san pa taiga ye bal  
renda". Tond san di wala d siisa lame,  
d naa kiime. "F ka kiid ye"

woto la waafa leok paga.

"Yamb naa n lebga wa

wennaam". A Awa ra

tulga taiga biisi. A kelga

waafa

goama n yak taiga bil n di.



A Awa sen todg wend noore a  
kitame ta Adm me lem tiiga  
billi. A Adm ra tog n todga me  
n ye ti: "A yo!" Mam ko kiis  
wend noor ye.





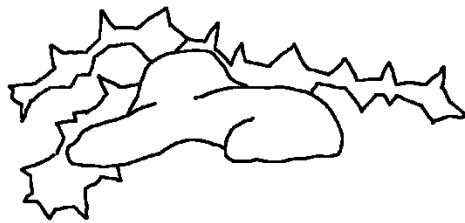
A Adm ne Awa  
sen maan yel-wende b yiiba banga  
marsa ti b ya zaala. B bao kankang  
Vaado n na zap-zap n segne, la b ke weogo  
n soonde ti soala wend nif ra-yaend-b ye.



Ziig sen wa n maaga, wend waa zeeda puga. B ra zoe mii bumb ning faa a Adm la Awa sen maana. A Adm ninga Awa taale, ta Awa me ning waafa taale. Weennaam yelame: "Mam Kaaba waafa. Paga na n namsa toog Puga n dog a Kamba". "B yeela rao wa, fo sen todg noore n maan yel-wend yinga, tengga ko zind bark f ye, a na woma goos la yoens-tabdo. F na n kaag f riir toolgo n paam n di."



Wend yiisa Adm la Awa  
Eden zeeda wa b sen  
maan yelwend yinga, b  
zaaga b mense ne wend  
ning sen kota  
viima.

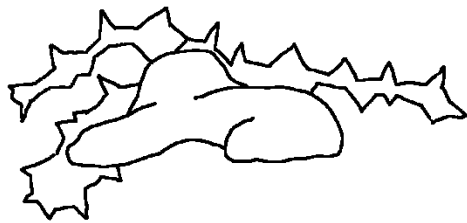






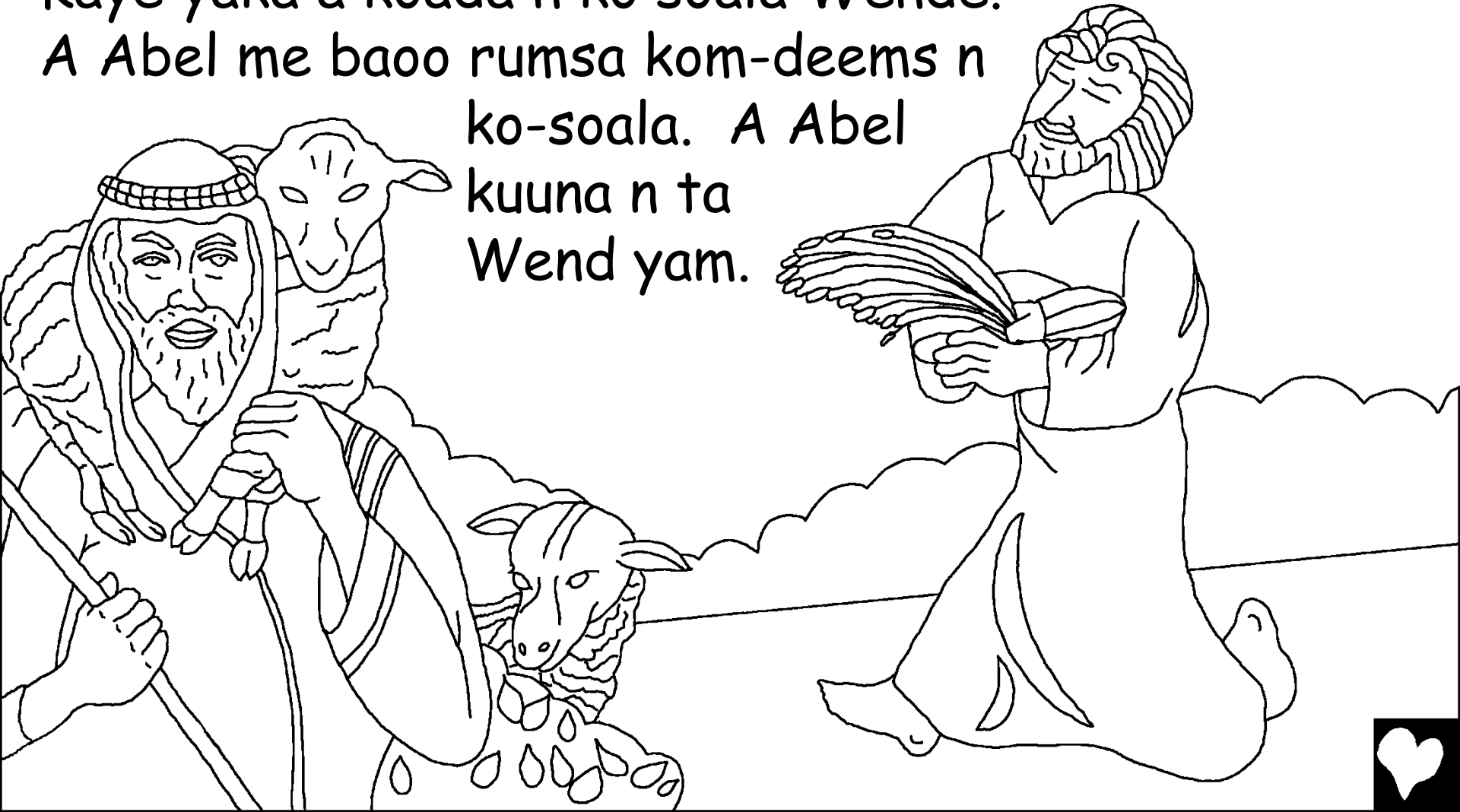
Wend maana suus sen  
yagd bugum n na yile n guidba ti b  
ra le wa ke ye. Wend koa a Adm  
ne a Awa fu bed sen ya wogdo  
n maan ne rums gando.

Ya a ye la  
Wend yak  
gand bamba?

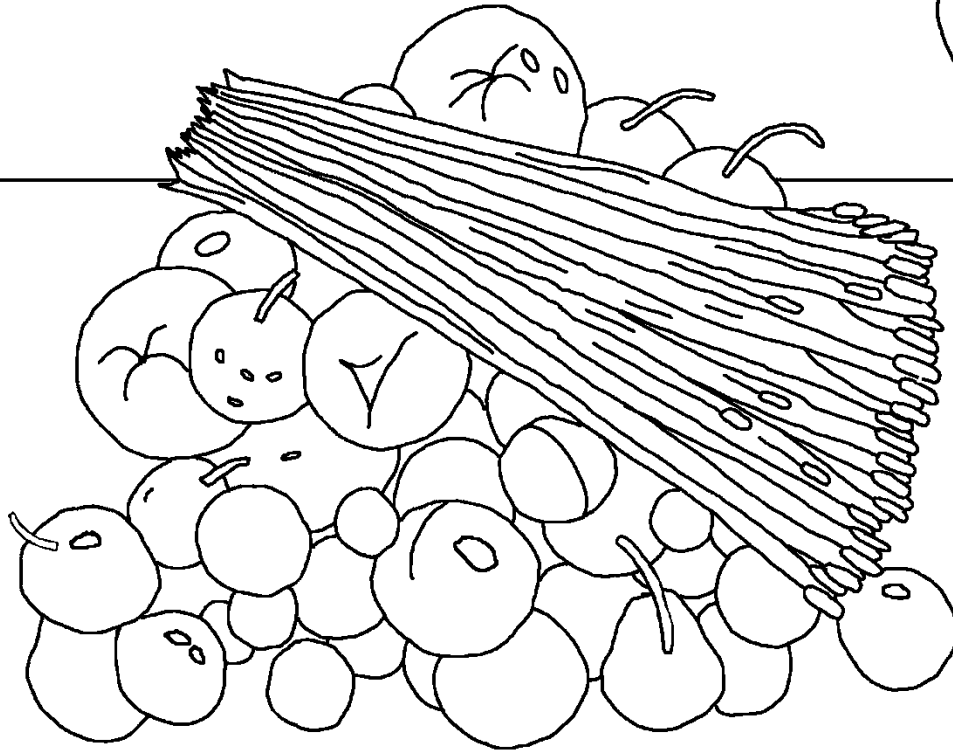


Sen waa n bee, a Adm na a Awa paama kamb ne taaba. B pipi biiga, a Kaye ye ra ya ka koad a. B yiib n soab biiga, a Abel ye ra ya rum kiima. Daar a ye a Kaye yaka a koad a n ko soala Wende.

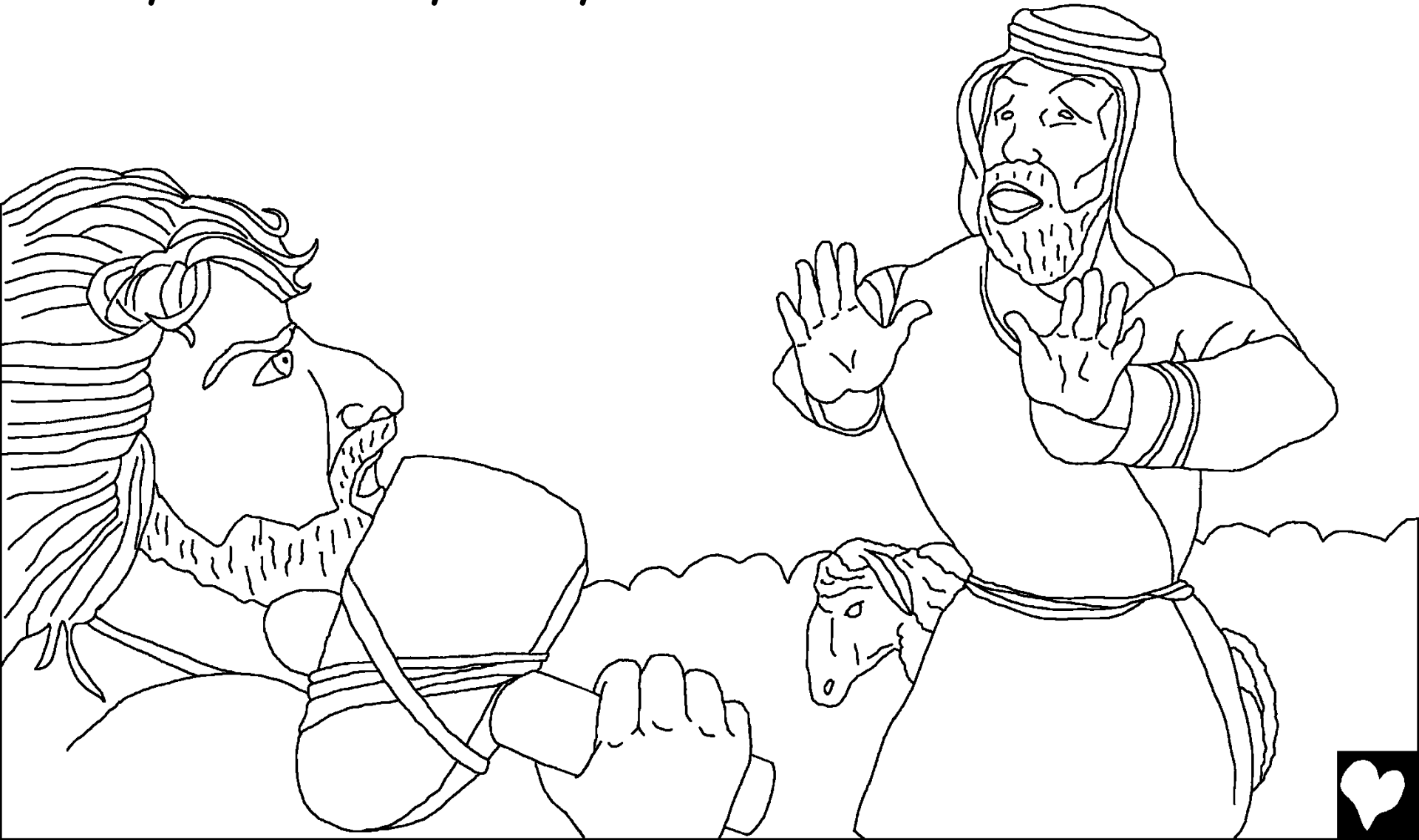
A Abel me baoo rumsa kom-deems n ko-soala. A Abel kuuna n ta Wend yam.



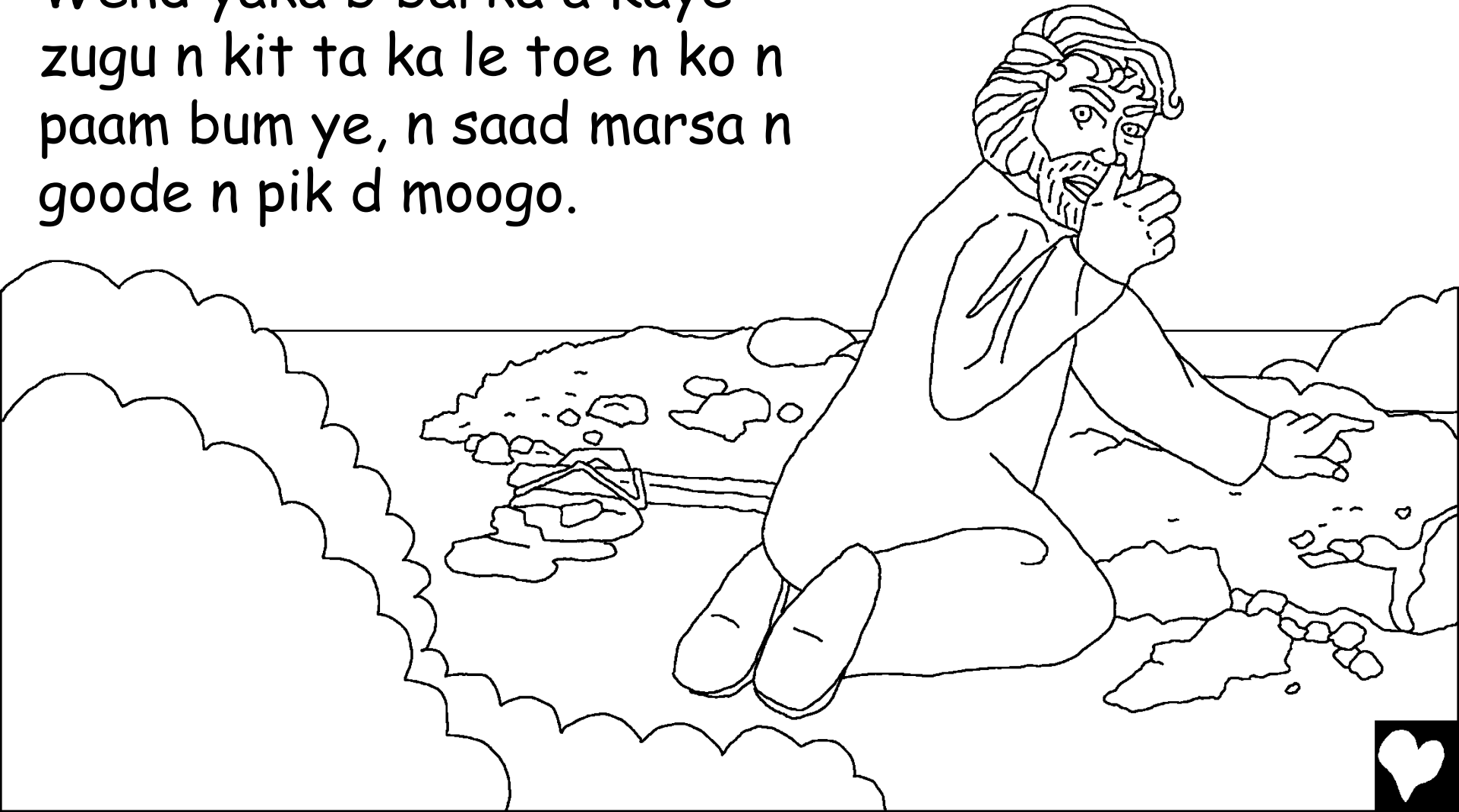
A Kaye kuuna ka ta Wend yam  
ye. A Kaye suur puuga wosgo la  
soala wend yeelame "Yamb san  
maand sen ya sombo, re yinga b  
ko sak yamba?"



A Kaye kel n paa a su puura  
puga. Sen waa n bee a yika zabr  
nea yao Abel n yak a yoore.



Wend goma ne a Kaye woto: "F yao a Abel bee?" "A Kaye yaga zire n beedo n yet ta ka mi ye". Wend yaka b barka a Kaye zugu n kit ta ka le toe n ko n paam bum ye, n saad marsa n goode n pik d moogo.



A Kaye yii Wennaam ziira puga. A ra ke kaadm nea  
Adm la Awa bi Pugla t'b zind ne taaba n dog Kamba.  
Sen waa n bee a Kaye yagens la a yagens  
tub ra keese n deeg teng ninga a  
Kaye sen da be wa n sooge.



Wakat kanga a Adm la a Awa buud  
wenngene fiiga tao-tao. Re Wend ti  
ninsaal b ra tao n viinda duni n  
kaoose n yiid wa marsa.



A Awa biiga a Set sen dogo a yeela me:  
"Wend koa maan a Set n leda Abel ziiga".  
A Set yii ned sen da nong puusgo. A  
viinda yuum kobs we la pii la yiibu, n dog  
kamb wusgo.





Zamaan sen tong re poore, ninsaalba  
ra lebgda ni-weense duni puga. Baasgo  
wend dika sard n na saam duni gilli la.  
We rumsa ne luiili wa faa. Wend  
suur ra-saama neb sen naan  
ninsaala. La ne re  
faa Wend

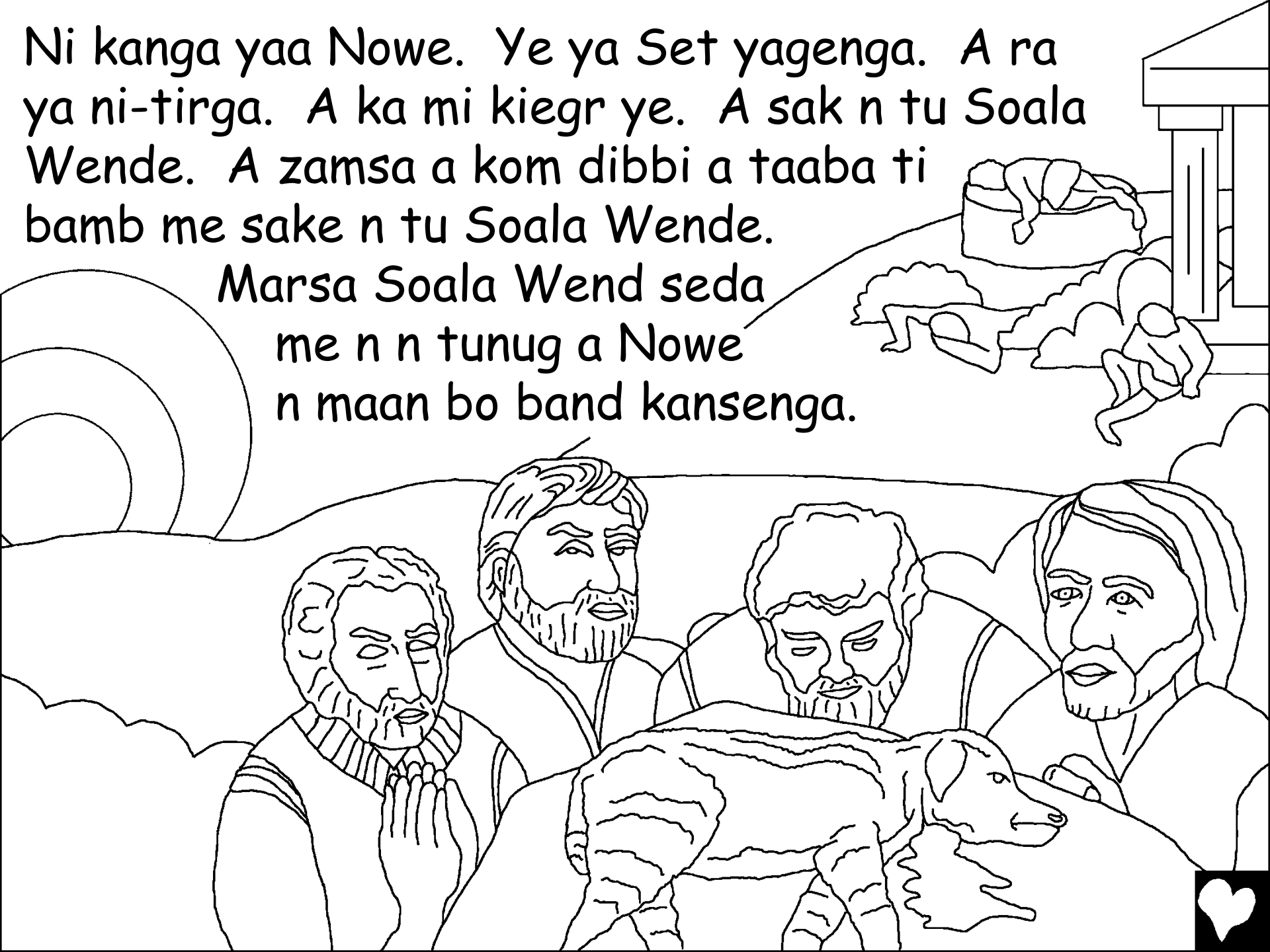


suur ra kee  
ne neda ya, ye  
ra taa Wend  
raabo ...



Ni kanga yaa Nowe. Ye ya Set yagenga. A ra  
ya ni-tirga. A ka mi kiegr ye. A sak n tu Soala  
Wende. A zamsa a kom dibbi a taaba ti  
bamb me sake n tu Soala Wende.

Marsa Soala Wend seda  
me n n tunug a Nowe  
n maan bo band kansenga.



Ninsaal su-saams singre

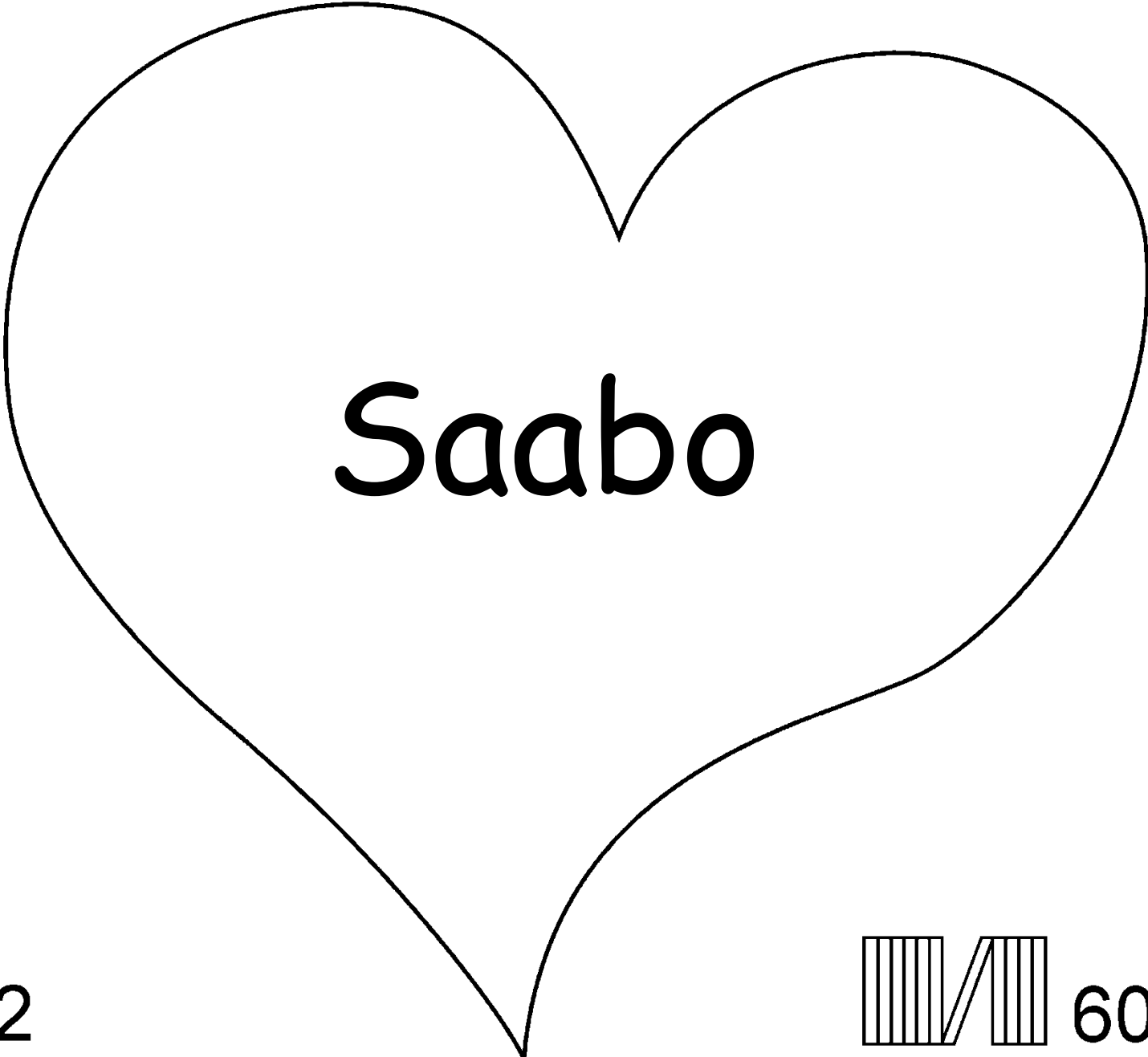
Kibare sen yak wend gomda poga,  
sebr song poga

Bee

Singre 3-6

"Yamba gomda veenegda me."  
Yii noodo 119:130





Saabo

2

60



Kibar kanga sen be sebr song poge, gomda ne tond  
wend ninga sen naana tondo la rat ti tond banga wa yelle.

Wennaam mime ti dond maanda yel yoodo a sen boonde  
ti yel wenna. La yel wenna sibgr yaa kuum, La wend sen nong  
yamb al wosg yinga b toma b bi yenga zezi t'b sak namesgo la  
kuum pik zogo yamb yel-wenna yinga. B kuuma poore, B  
voogame n do arzane! Yamb san n teeba zezi, la y san kosba y  
yel wenna sugri B reega y kosga. B wata y poge n Pa ne  
yamba n viand ne yamb daar la wakat buud faa.

Yamb san teed ti goama yaa sifa bii yeel wend woto:  
M zu-soaba Zezi, mam teedame ti yamb yaa wende, la yamb  
sakame n lebg nisaala n naa n ki mam yel wenna yinga, n lzb n  
vooge. Mam kota yamb ti y wa ke mam viima poga n ko maam m  
yel wenna sugri sen na yillé ti m viand vim palg poge marsa n wa  
toong n pa ne yamb daar la wakat buud faa. Song y aam ti m  
sak yamb noora la m viand wa yamb biiga. Amiina!

Kaarm sebr song la gom ne wende daar buud faa! John 3:16

