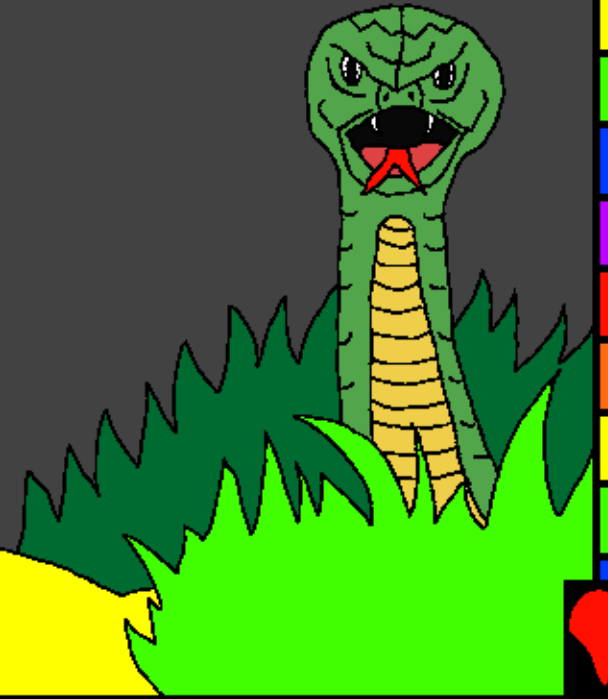


Hawtinaw chata Bihrai
Pachhua panoh tu pa

Chysapa
paloritheina a
thaona



Roh tu pa: Edward Hughes

Chhopasia tu pa: Byron Unger; Lazarus
Alastair Paterson

Hma tu pa: M. Maillot; Tammy S.

Rei pali tu pa: Hre Ling

A papua tu pa: Bible for Children
www.M1914.org

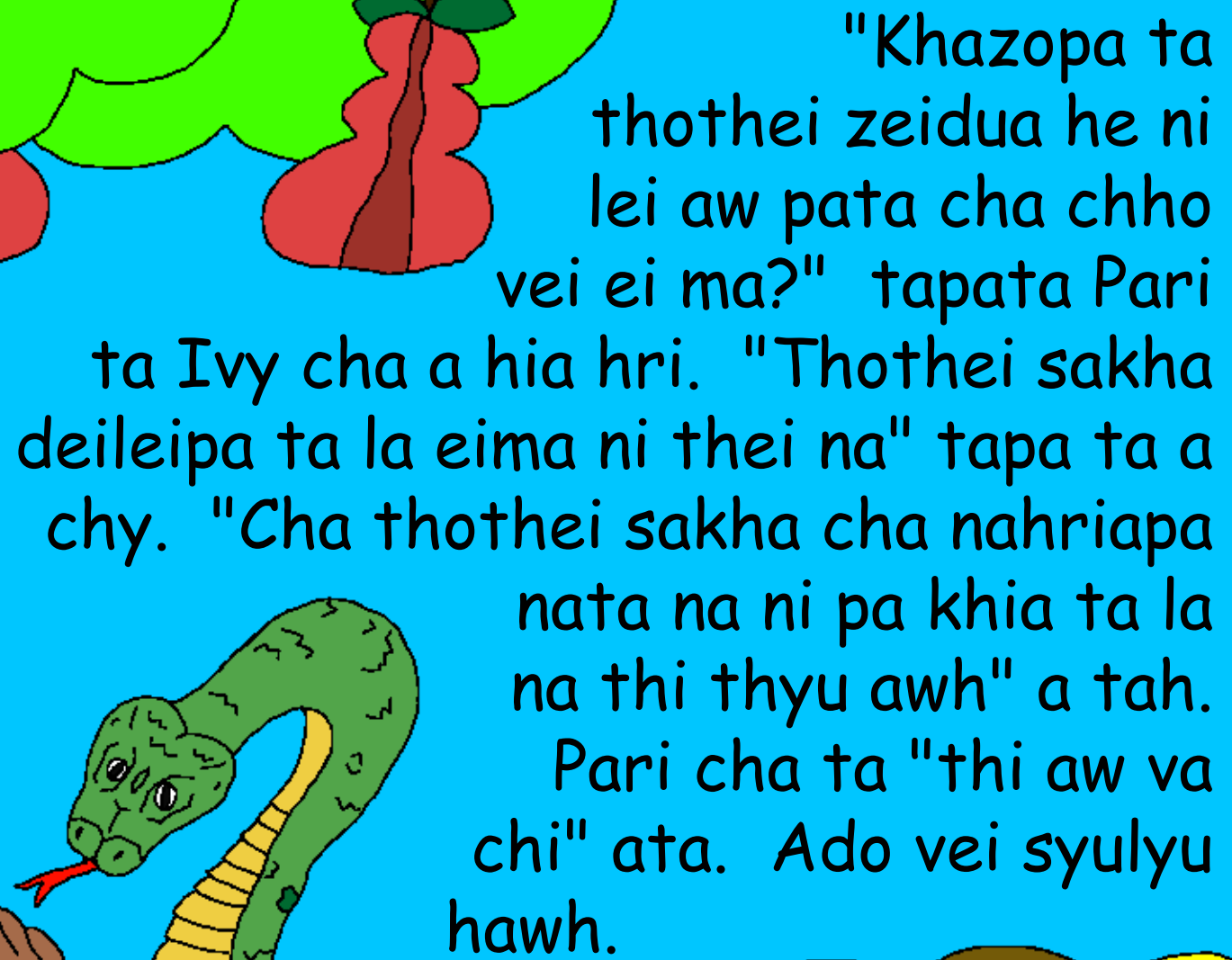
©2020 Bible for Children, Inc.

License: He cha u he print tao thei pa a cha.
Zua aw pa cha vei. A chhana.



ATOZY DUA HE KHAZOPA TA
ATAO! Khazopa ta Chysa hmiatua
chaipa Ada tao ta, Ada cha alapino
Ivy nata Eda sado liata a ma y. Ada
nata Ivy cha Khazopa
hmiako lia ta a lyna kipa
ta nokha chho
a ma y ...





"Khazopa ta
thothei zeidua he ni
lei aw pata cha chho
vei ei ma?" tapata Pari
ta Ivy cha a hia hri. "Thothei sakha
deileipa ta la eima ni thei na" tapa ta a
chy. "Cha thothei sakha cha nahriapa
nata na ni pa khia ta la
na thi thyu awh" a tah.
Pari cha ta "thi aw va
chi" ata. Ado vei syulyu
hawh.





"Khazopa tlai haw ta na cha aw hata." Cha thokopa thei cha Ivy ta a ni kho ngasa ba. Ivy cha Pari rei angia ta tho theipa cha a nie haw.



Ivy cha Khazopa rei a ngia
khaoleipa ta avapa Ada chhao
apa ni sa haw hra. "Ada cha,
Khazopa bie ei awvana
ata aw pa a cha."

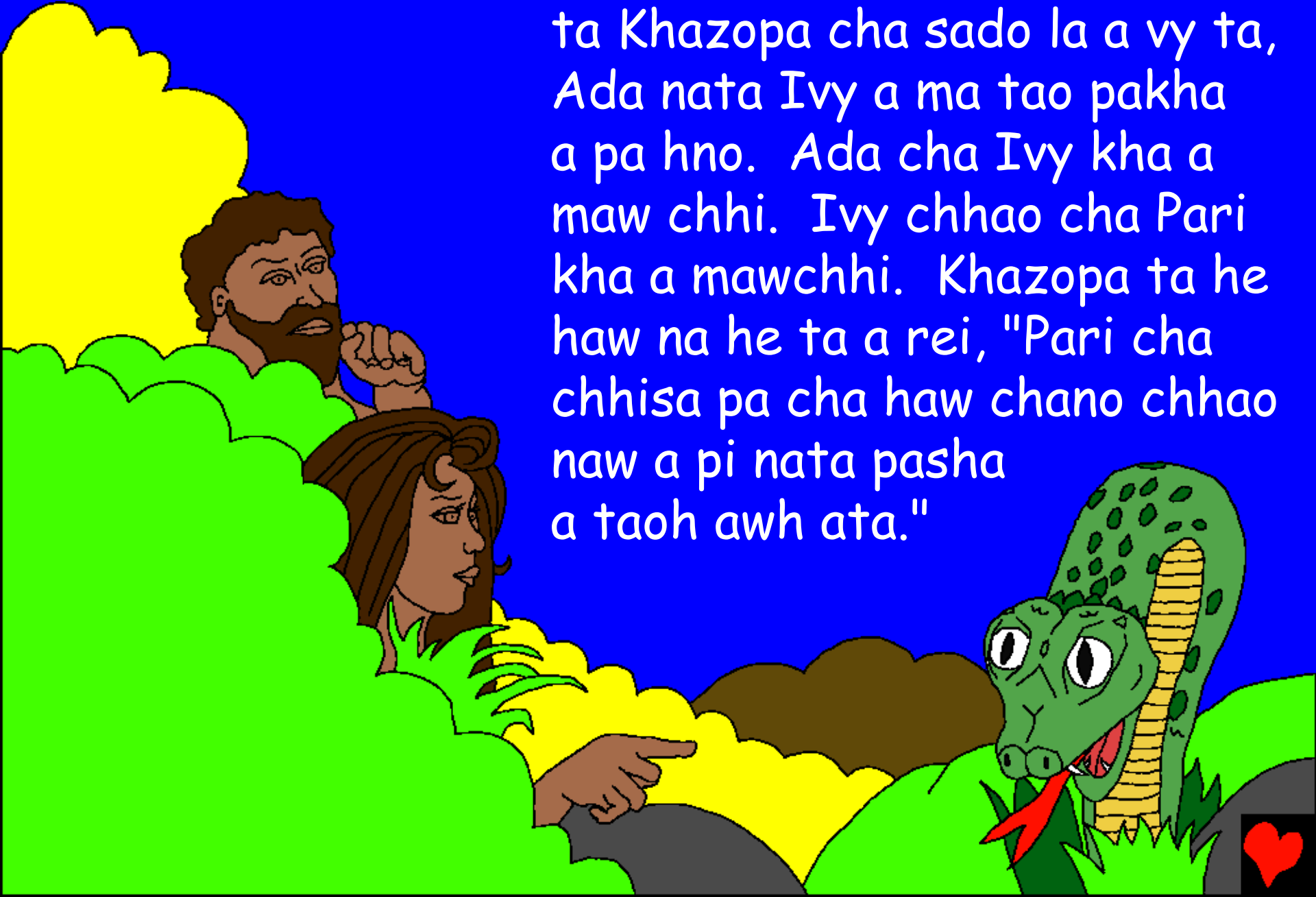




Ada nata Ivy cha ama molei ha
taw ta, a ma thluahruapa ta a ma y pakha a
ma pa hno. Ama thluahruapa cha thohna ta
a cha hru ei ta, Khazopa taw ta a ma nyu haw.



A cha si kawpa notla pha zala ta Khazopa cha sado la a vy ta, Ada nata Ivy a ma tao pakha a pa hno. Ada cha Ivy kha a maw chhi. Ivy chhao cha Pari kha a mawchhi. Khazopa ta he haw na he ta a rei, "Pari cha chhisa pa cha haw chano chhao naw a pi nata pasha a taoh awh ata."




Ada, namoleina vat a a lei
cha chhiesapa chata ahlo
zy ta a bie awh. Nie do
nah mo thei naw pa ta ahlo
zy hreilia ta namathlai
thisai chhao ta rain
a hria awh ata.



Khazopa ta Ada nata Ivy cha
noah chhah pa Sado pha pa taw
ta a papua haw ei. Ama molei
hawpa vat a cha.
Hrona pitupa
Khazopa
na ta ama
chhah haw.





Khazopa ta
meipalei ta a ia pa
vaina nata zaozi ta a pa pua haw
ei. Khazopa ta Ada nata Ivy cha
savopa ta taopa Khaohrie lopa
a pa ky sa ei. Khazopa
ta savopa cha
khapa tawta
ma a la?



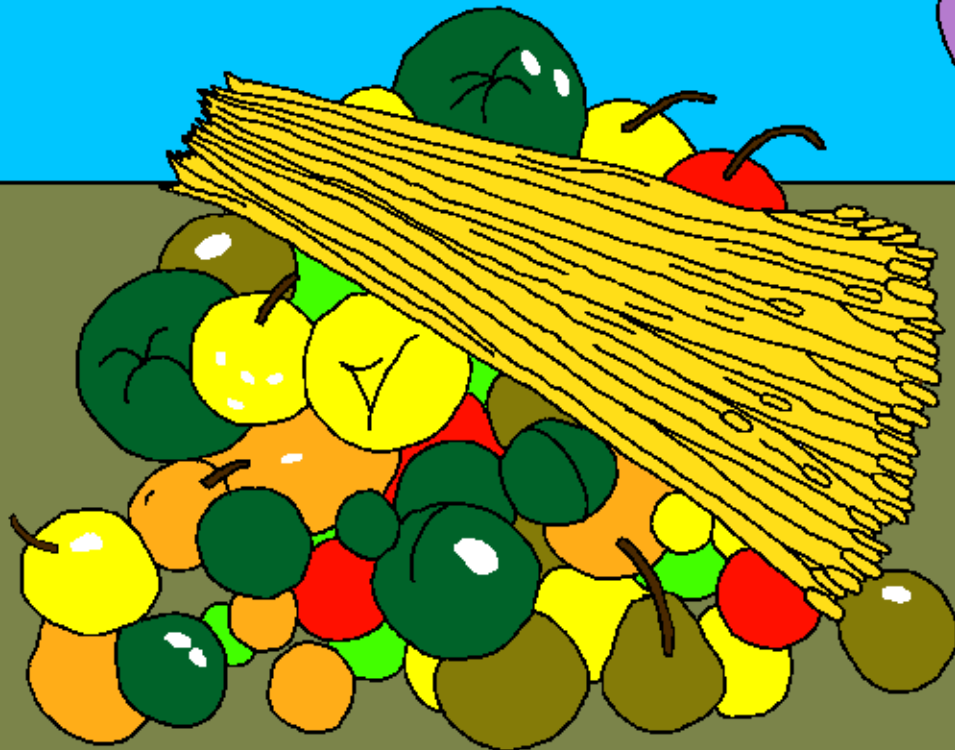
A daiti avaw tlo nata Ada nata Ivy cha saw ta
a ma vaw hnei. Saw chapaw pakhana cha, Kaina a
cha. Kaina cha sado mohotupa a cha. Saw chapaw
panohna hnei hei ei ta a no cha
Abela a cha. Abela
cha Meitakupa
vai tupa
acha.



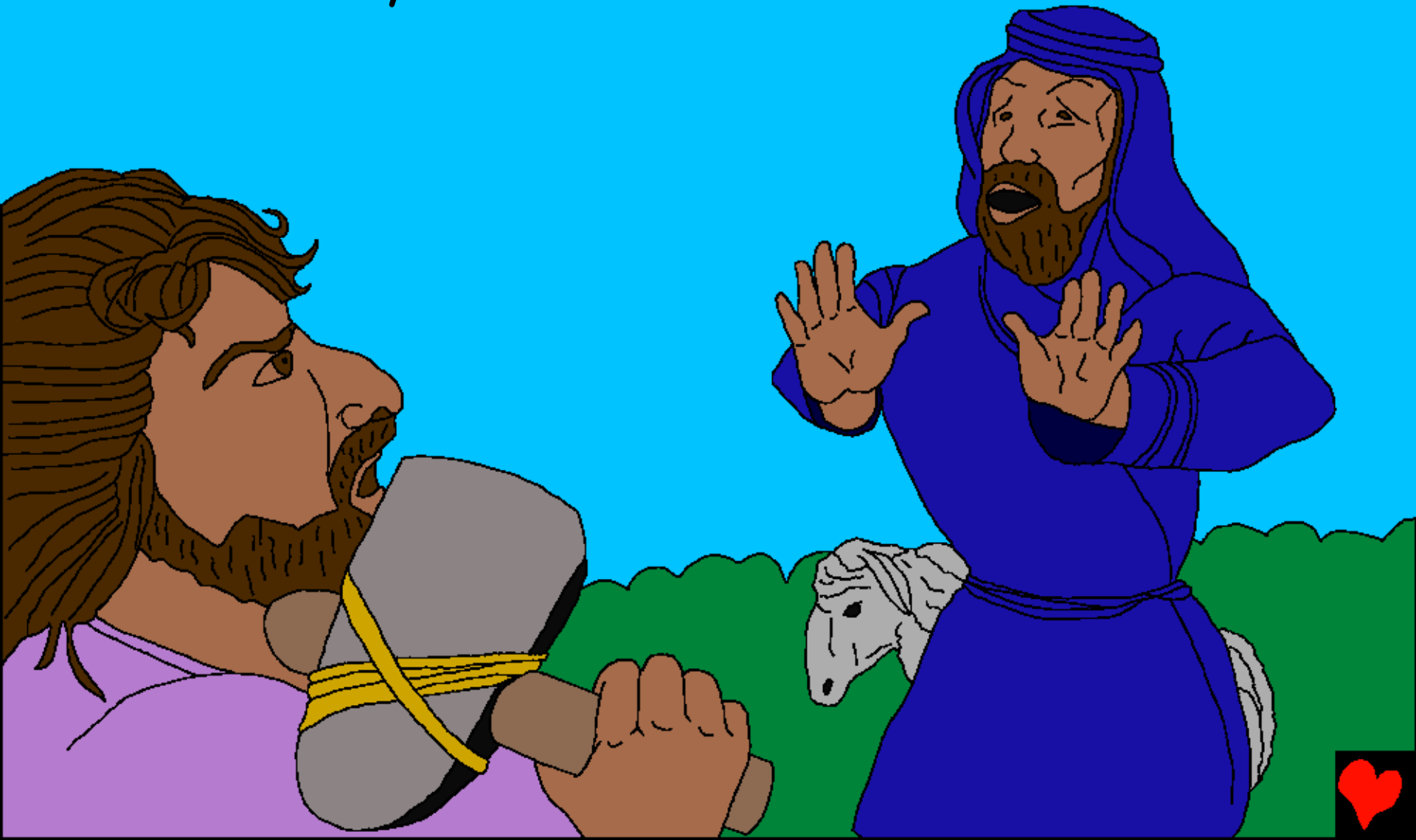
Nokha cha, Kainah ta ahnallasipa Khazopa lata
avaw pi. Abela ta a Meitakupa zudua hreiliata a
phachaipa a vaw pi. Khazopa ta Abela pie pa
cha a ly kaw.



Khazopa ta Kaina hmopipa
cha a lei khei vei. Kaina cha
apathie a ia kaw. Khazopa ta
Na hmo taopa he phamaw sala,
kho thla ha va chi ma? Ata.



Kaina cha a pathie iana pha hlei
vei. Cha h nolana cha ta, lo lia ta
Abela cha a dyu ta a thih haw.



Khazopa ta Kaina hno ta he haw ta a rei. "Na unawpa Abela, khapa lia ta ma a y?" Abela cha ta "pahno va na" ta pa ta a chhyu. "Kei he ei unawpa a mo hoh pa ei cha ma?" A ta. Khazopa ta Abela hrai hria thaina so na cha la khai haw ta noah kawpa ta a soh.



Cha taw cha, Kaina cha Khazopa taw ta a pua haw.
Ada nata Ivy saw chanoh no lapi ta a hnei. Chhokha
a ma pa dua. Kaina samopa nata sohlaopa
zy cha a mapaw Kaina taopa khipi pa
cha a ma bi khai haw.



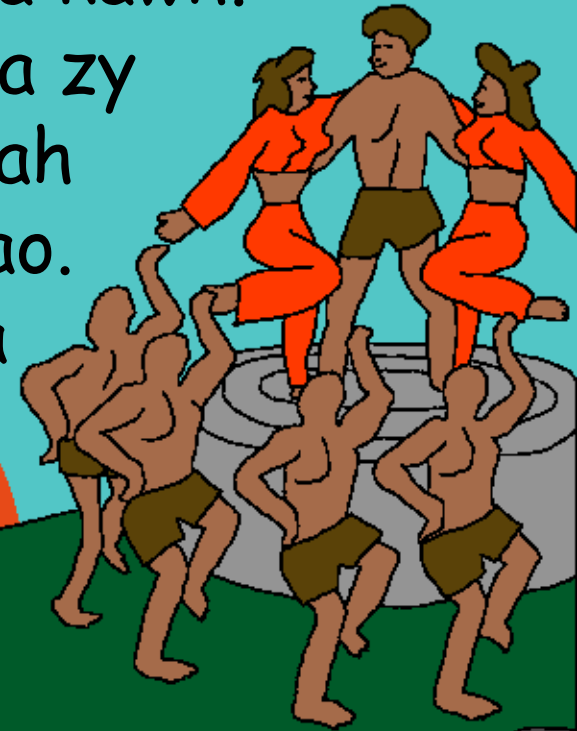
Ada nata Ivy saw zy cha a ma poh
chatlie kaw. Chanoh lia ta chysa
zy cha atano lia ta chysa zy hla
ta amo hro a pa si via syu lyu.



Asaw chapawpa Setha vawpi ta, "Ei saw chapawpa he abela vyupa ta Khazopa ta eina piepa a cha" tahta. Setha cha Khazopa angiapa kaw pa cha ta, ko 912 hro ta saw hlupi a hnei.



He khizaw lia he, chysa zy cha chhakha
hno chhakha a ma molei via nga kawh.
Chavana chata, Khazopa ta chysa zy
dua he pahleipadia aw pa khoh tah
Sarahpa nata pavaw zy dua chhao.
Khazopa cha chysa a tao pa he a
ngiapachhi kaw. Chahrasala



chysa pakha
cha Khazopa
palo a pa tla
pa a y ...



Cha chysa cha Noah a cha. Seta
chi pathla a cha. Noah cha chysa doh
kawpa nata thahchhina rai a hneileipa
a cha. Khazopa nata
hmaokha tatah
a ma y.



Asaw chapaw pathona zy chhao
Khazopa reingia awh pa ta a pa chu
ei. Chataw cha, Khazopa ta Noah cha
noah chhah kawpa nata a pha
chaipa ta hmah awh
patah a chhuana
a hnei.



Chysapa paloritheina a thaona

Khazopa Bie, Beihrai lia ta
hmopa a cha

Athaona 3-6

"Nabiecha Khaina a cha."
Hlazy 119:130



Achhana



He Bihrai he ta, noah chhah kawhpa ei ma
Khazohpa mania atao tupa ky pahno aw h pa mania a kho.

Hmophaleipa eima taopa he Khazopa ta a pa hno, hmo phaleipa cha
moleina a ta, moleina hlao cha thina a cha, chahrasala, Khazopa ta
chatlatluta ky mia a pacha vata, a Saw chapaw matlupa, Zusu, cha
Kross liata keimo chysa zy moleina vyupata athi. Zisu cha thina tawta
thyu hei ta Vara la a kia hawh. Zisu Krista cha a ngiapa la, na molei
ngiathaina na hawh khia ta la, cha ngiathai aw h ta ano hno
ta na y aw h. Chatawcha Zisu hno ta chhazawta na hro aw h.

He bi he ado tlaina na ta khia la, Khazopa hno ta he haw ta rei ma y:
Ky napacha tupa Zisu Khazopa nacha tapa ei ngiapa. Keimah moleina va
ta chysa lata vaw cha chi ta, thi chi ta, na hro haw he. Keima hno ta
vaw y la, ei moleina zy dua na ngia thai ma y. Kei Chhao hrona thihpa
ei hnei thei naw pa ta. No chhana no lia ta na hno ta chha
zaw ta ei y thei naw pa ta. Na saw chapawpa haw ta narei
ngia pa ta ei y thei naw pa ta na bao ma y.

Khazopa Bihrai he reila, no tatota Khazopa
na ta bi a chho ma ei.

