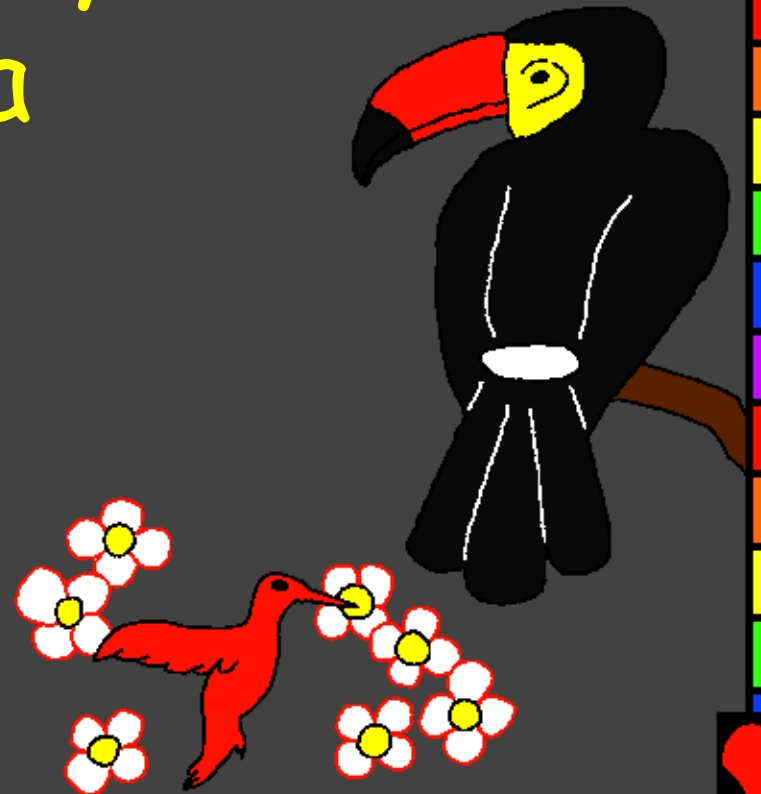
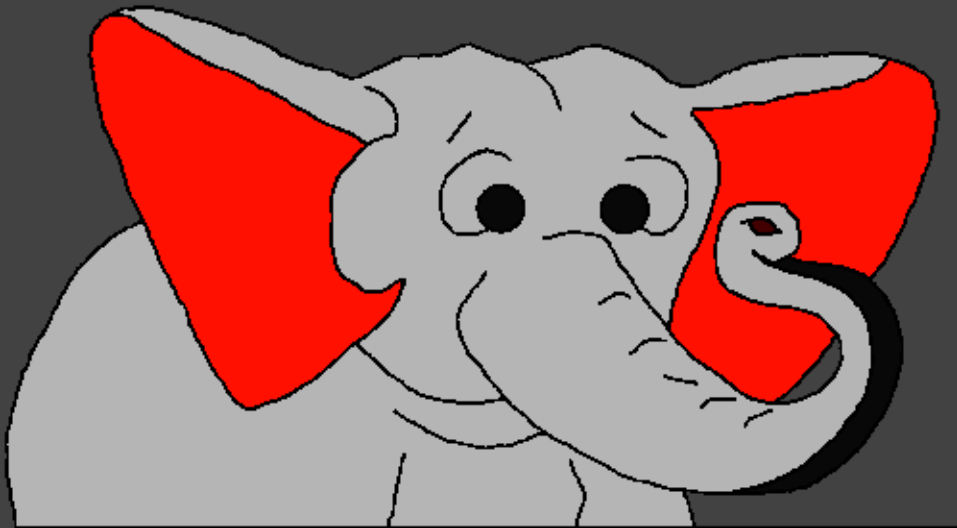


Dingding ngol la Biblo
Bal yitandi la

Loung mina Ma yé
fewol bé da



Ming ya safe: Edward Hughes

Ming ya missali: Byron Unger; Lazarus
Alastair Paterson

Ming ye koutayandi: Bob Davies; Tammy S.

Ming ye a fasari: www.christian-translation.com

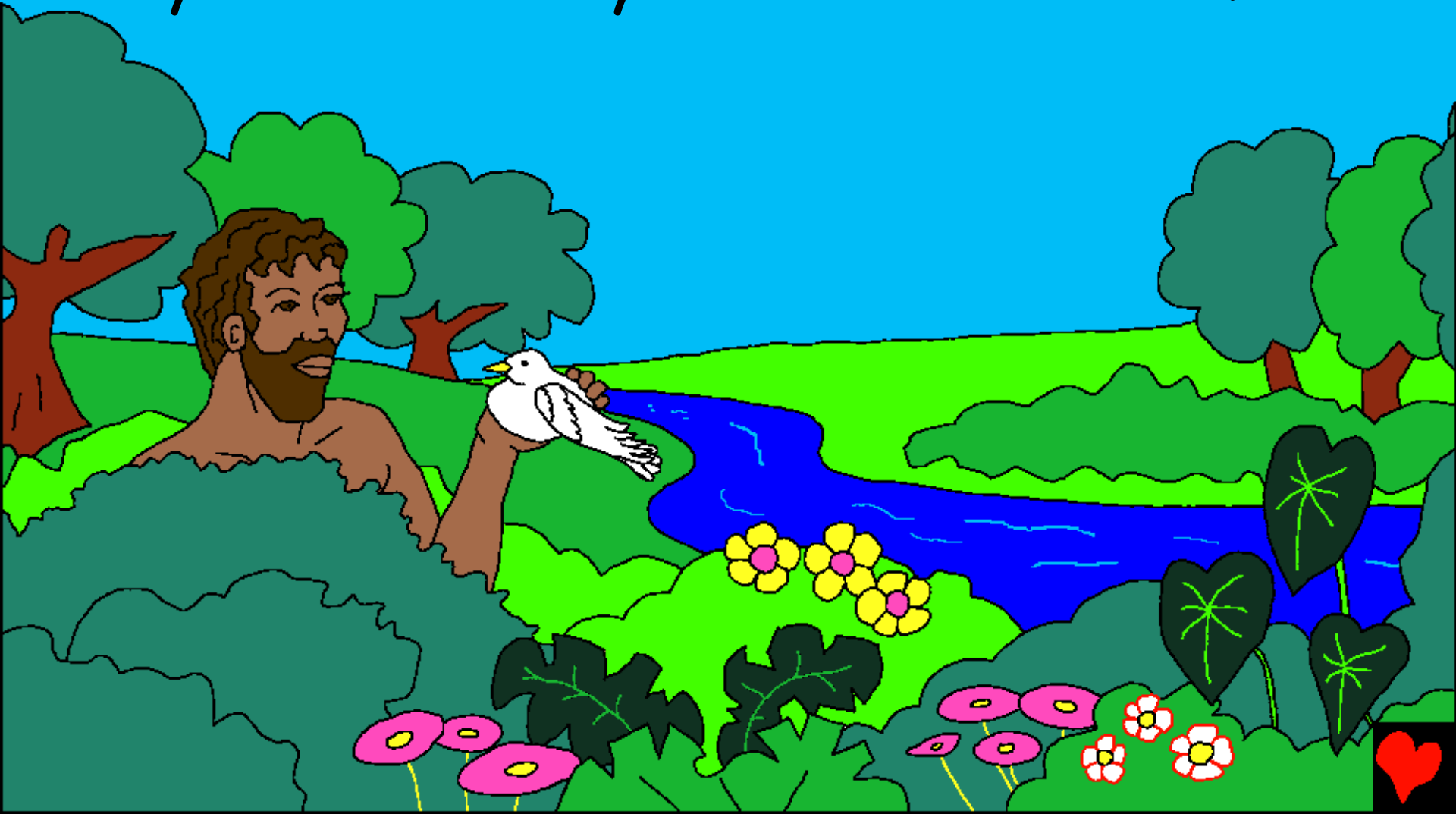
Ming ye a dooku: Bible for Children
www.M1914.org

©2021 Bible for Children, Inc.

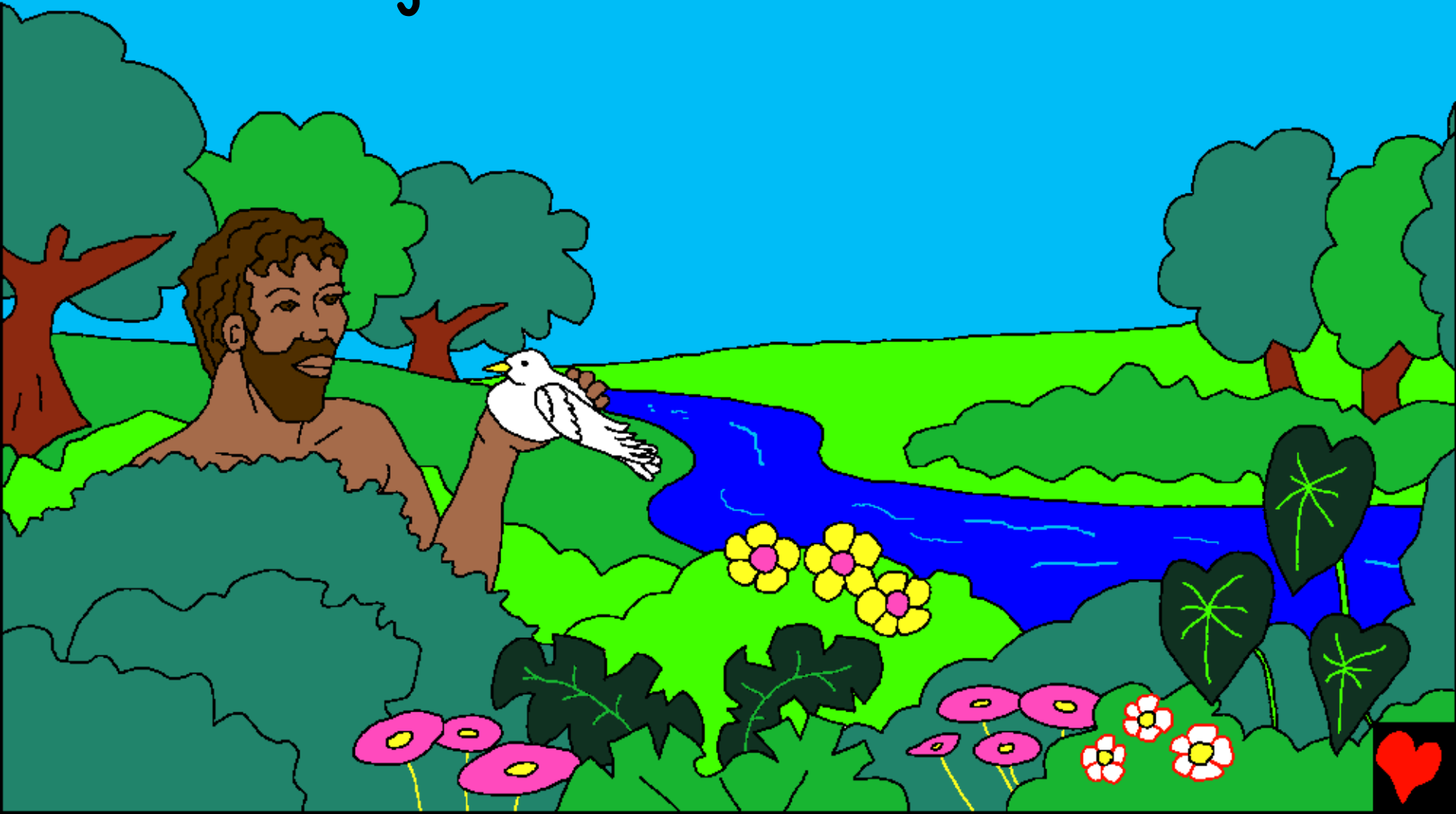
License: Isa yélémanolé ilafitala naging bari kana wafi.



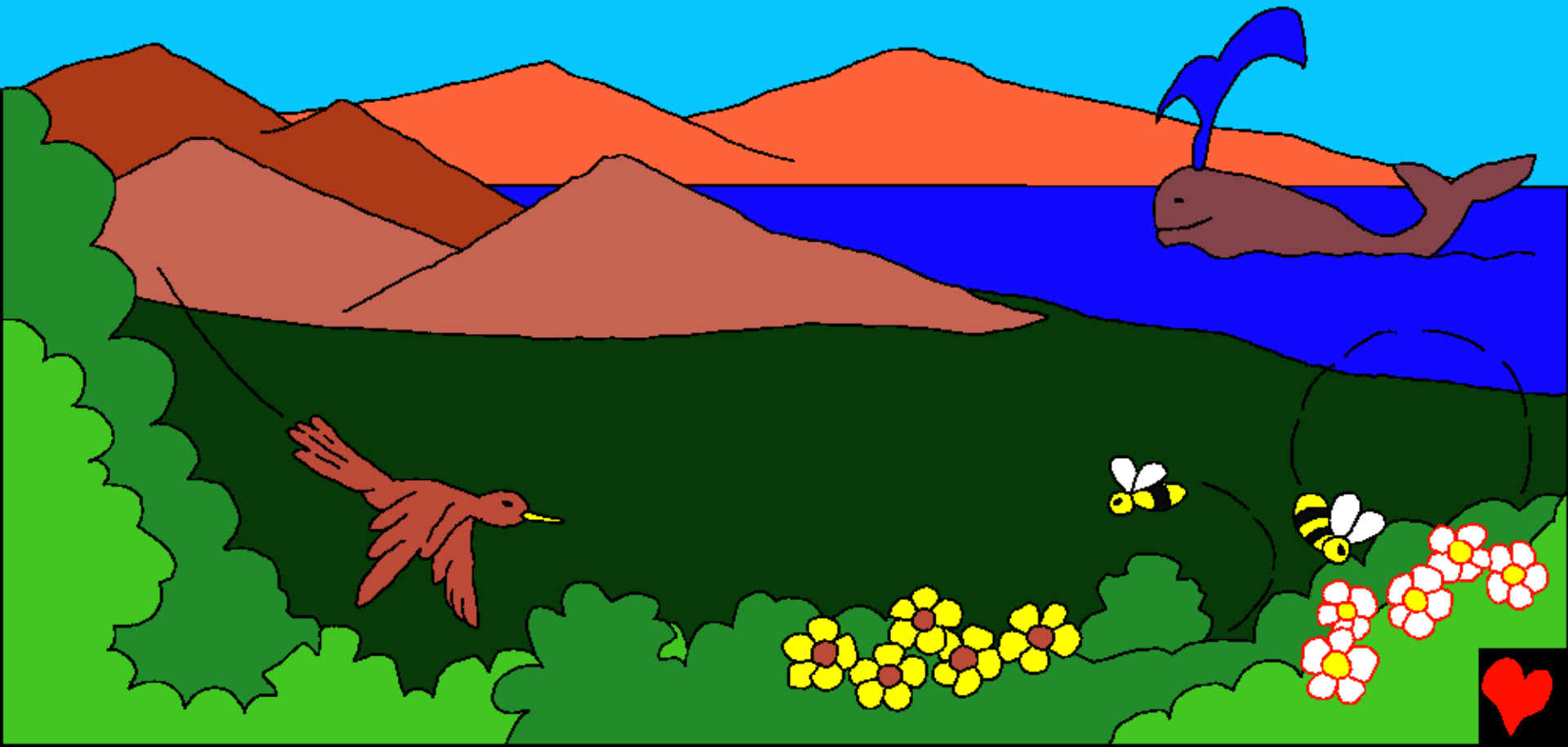
Diouma yé ntol da? Ma la koumo, Biblo
ayé mol yitandi la adama dinwoul dada ta
yandi lé. Ma yé Adama lé dada folo.



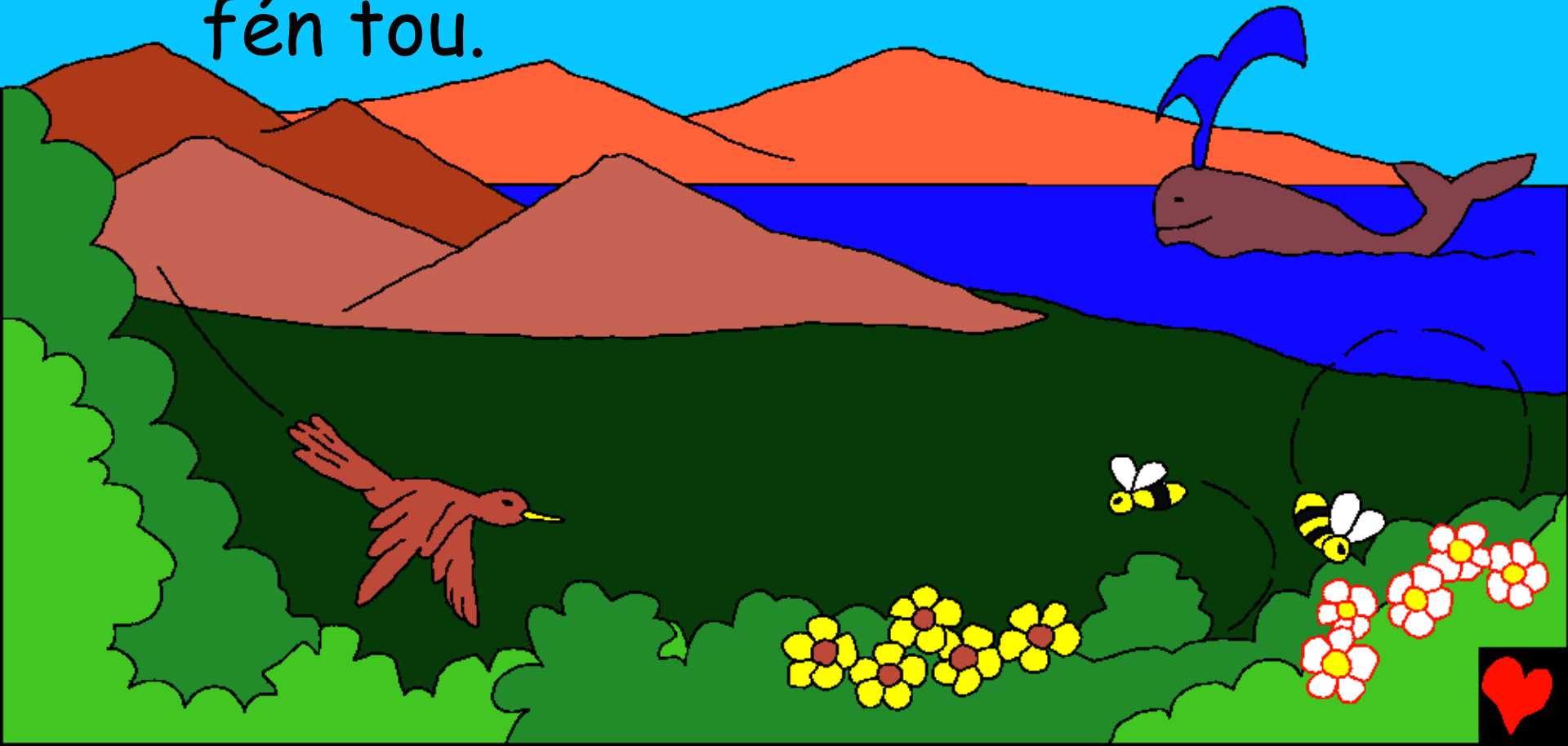
Aya dada bankô la. Capriņ ayé balouwo
diyala a balouta aya faņ djé naco ņima
ihamiņ tola aldiana.



Dianabé Adama dada la, Ma yé dunya
ɲima lé dada fofol aniɲ fen ɲimal.



Domandiṅ domandiṅ ayé toula fanourinṅ
cafou, koukoo aniṅ yir bà, kounol aniṅ
koumbou rouṅ kata wolonko finn da aniṅ
patamoo. Ma maṅ fén tou, bé dada ta -
fén tou.



Folo, capriņ Ma bé dara
la, feņ maņ sotonouņ na
man ké a damaņ. Dibô
teņ palaço, santo
maņ soto, douma
fanaņ, kounou
teņ, sama fanaņ
ten. Ma tamaņ
mouņ man foto soto.
Sayiņ Ma mamaņ tà!

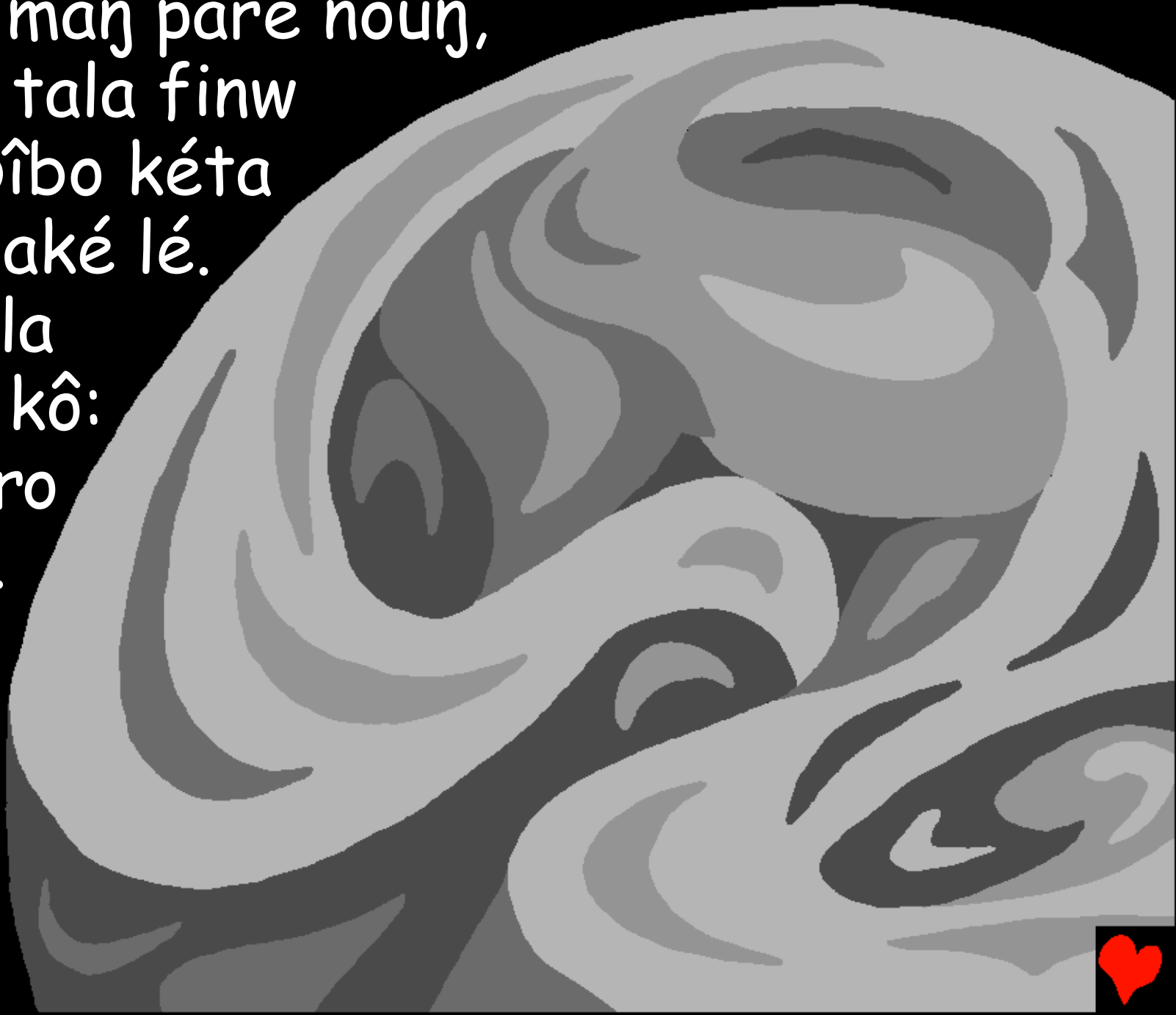


Ma folota ka sanwoulo niŋ banko dara
banko sénéyatouné, a kidé tale.

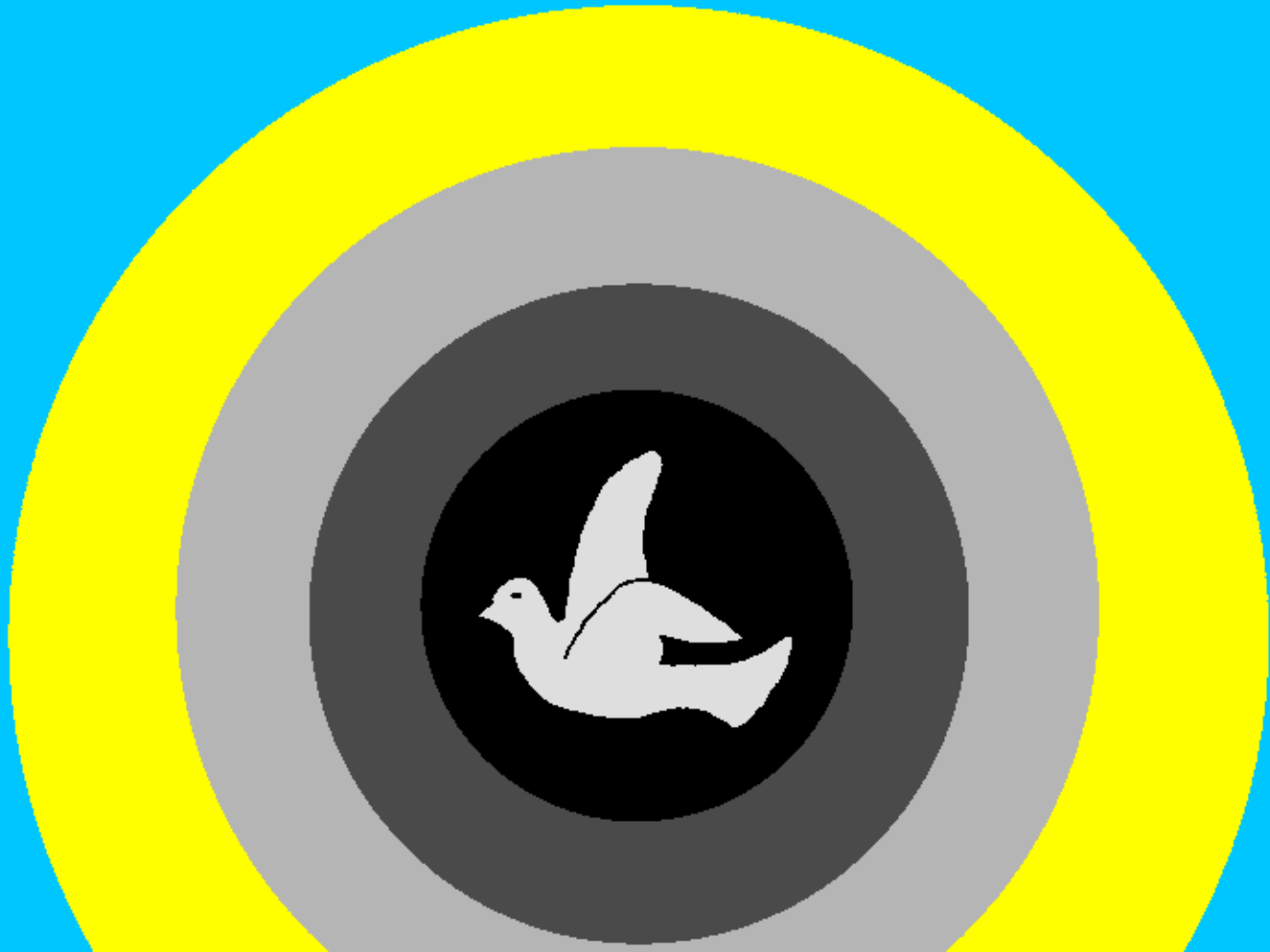


Banko maṅ pare nouṅ,
formo tala finw
tala. Dîbo kéta
nouṅ baké lé.

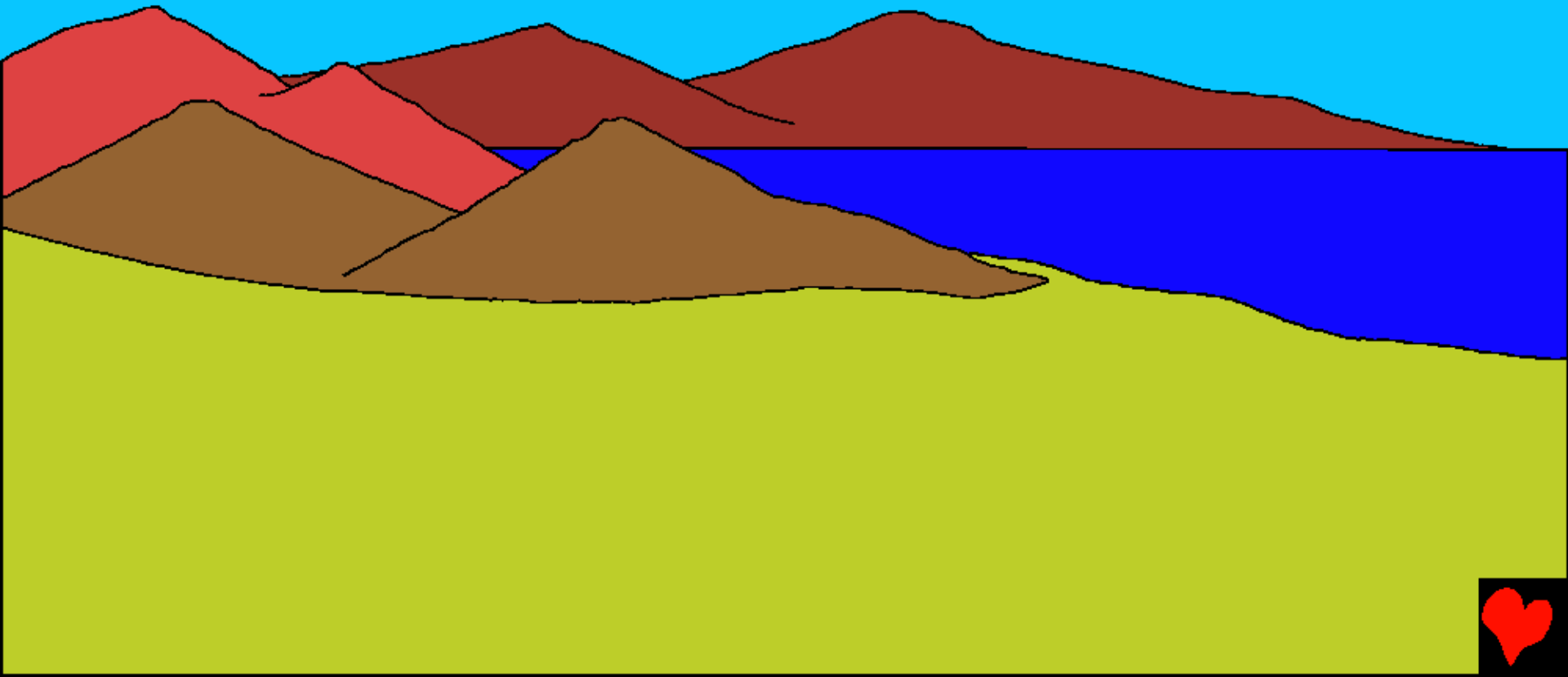
Wo kola
Ma yé kô:
"Lumièro
yé na".



Yé lola souba. Ma yélumièro tola souba,
ayé dibo tola souto. Souba niṅ souto
kéta louṅ foloti.



Til foulo, Ma yé bāning bolonḡ djiyo
bondi naḡ sacoulo to. Til saban dinw,
ayé banko djandi, banko djata.



Ma yé niamol niŋ diambol dada. Yir ndinw
niŋ yir bàl fanaŋ nata. Woularo
niŋ somonenda kéta
til sabandianwti.



Wo kola, Ma yé tilo, niŋ caro
dada kata lô diam aba mom é
danw loŋ. Woularo niŋ
kéta louŋ naniŋ dianwti.



Faŋkaso cono da
finw, ŋinw, aniŋ
kounol nata. Til
lolou doanw, ayé
ŋé mendiŋ nati
aniŋ né mésséma,
kounou mendiŋ ba
mouŋ yé siŋ
diangama soto.



Ma yé njinwol bé
djindi bal to, ayé
kounol fanaŋ nati
dunya to. Woulato
niŋ souba nata til
loubou dianw.



A bota woto. Ma kouma ta kotéké ako,
alna ɲa da finw djindi. Béɲaw,
courountou da finw nata, samo mendiɲ
ba fanaya, soulol, bambol. Ma yé béɲin
bé da wo louɲ na.

Wolaro niɲ somoda nata til woro ndanw.



Til woro ndianw, Ma yé finw do fanaŋ ké
lé. Adama dinw yé finw bé soto lé,
domoro ba boulou, béŋaw fanaŋ ba boulo
lé. Ma ko abé Adama
dinw ké la Mansa ti,
ŋin dunya to bawo até
MA ATÉLON
ADAMA DINW
NIN DUNYA
MANSAH ...



Ma ko Adama yé.
"Isé finw bé
domonolé niṅ
naco to bari yir
do bidjé lé ija
tola londo yiro.
Ni yé niṅ yiro
ma, ibé fa la lé."



Ma ko adama, "Ndinw maṅ ñiana kidé la,
à solata finw mouṅ mba makoy la."
Béyaw niṅ kounoul bé nata?



Adama ye kilin kilin tola,
bawo adama kesiyata lé?
Bari ibé moul nada ka
Adama déma finw tidjé
mouŋ sà kidé boni no.



Ma yé Adama sinôndi. Adama la caro la,
Ma yé Adama dinw mouso da wolto.
Até lé bé Adama la
kidé boundila.



Finw bé dada ta lil woro, barit il
worowoulaŋ dianw Ma ye fondion
ndilé biriŋ ardiana, Adama ana la
mousso Awa yé balou ñima soto
djé to, ka Ma tentou mouŋ ké
ta ila mansah ti, ila kafounô.



Loung mina Ma yé fewol bé da

Sataro Ma kouma, Biblo

tara

Genèse 1-2

"Ka la kouma kawandi aka
môl fisiyandi lé."

Psalm 119:130



laban doula



Biblo la sataro ka Ma yitàndi mol mola
ayé ngiñ dunya niñ mol dada ñamiñ aniñ
moung lafta lô na.

Ma ya looné ko, adama dinw yé finw diaw
ya kélé sayiñ ka wo djounoubo djo ayé
saya nati. Bari Ma lafta adama dinw
woléyatinañ ayalé dima Isa mol kañ fasi
mola djounoubo ta. Woléyatinañ Isa piñ
piñ ta croix to. Isa balouta kotéké
atata aldiana. Nilata Isa la aniñ kala
djounoubo akotouyé aba kélalé! Abé
tarala ila dunya to.



Ñilata ñinaᅇ afo, Ma yé ko:

Isa bà ᅇa la taléko ité loᅇ Ma ti, ikéta mo
ti mouᅇ fà ta nou sayiᅇ ibalouta kotéké,
aké Ma yé ᅇou dé ma ᅇisi balou koutama
soto, ᅇté fatala ñiona. Ndéma ñé batou,
ké tentou ko idinw.

Amina.

Biblo karang iᅇing Ma yékouma louwo louᅇ!
John 3:16

