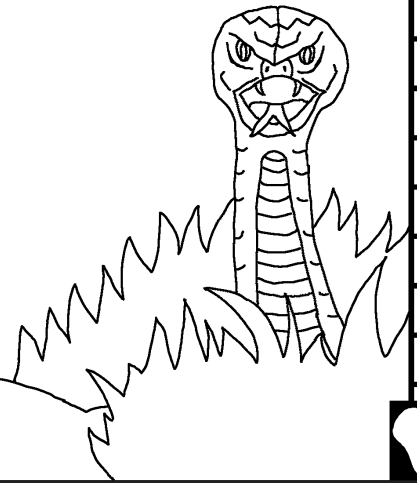


Ebibilia ye babana Yokesia

Khuranga khwe sibela sio mundu



Yaandibwa nende: Edward Hughes
Yokesebwa nende: Byron Unger; Lazarus
Alastair Paterson
Yabukulibwa nende: M. Maillot; Tammy S.
Yakalukhasibwa nende: Nicodemus Wokuri
Yarusibwa nende: Bible for Children
www.M1914.org

BFC
PO Box 3
Winnipeg, MB R3C 2G1
Canada

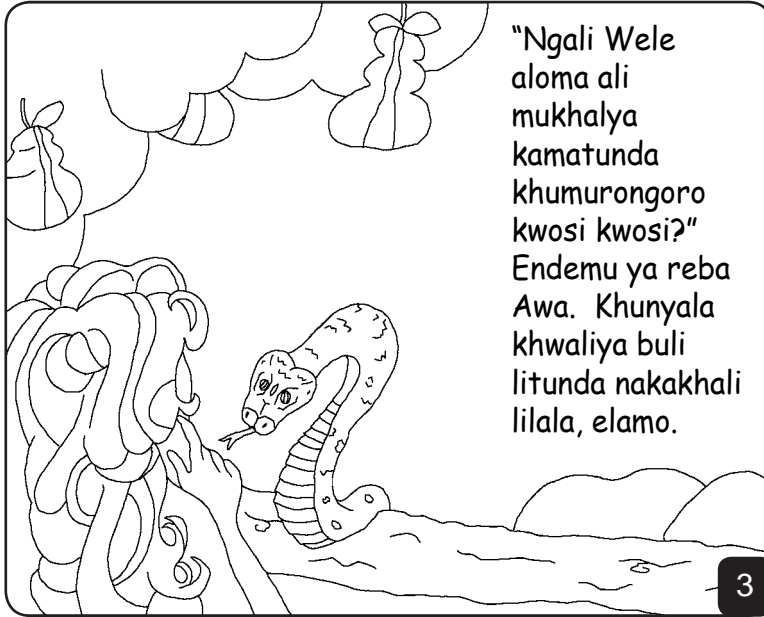
©2020 Bible for Children, Inc.
Khufukiliwa; Ewewe oli ne bung'ali bwe khurusia namwe
oandike lukano luno, neba mbo sio lakusia tawe.

1

WELE NIE OWABUMBA
BULI SINDU. Nga Wele nabumba
omundu wekhuranga, Adamu, amenya
mwirutu lya Eden nende omukhasi
wewe Awa, baba ne busiime bulayi
ne lirya khu Wele ne
kusangalila mukhubao khwa
Wele, khukhwola
endalo niebala.

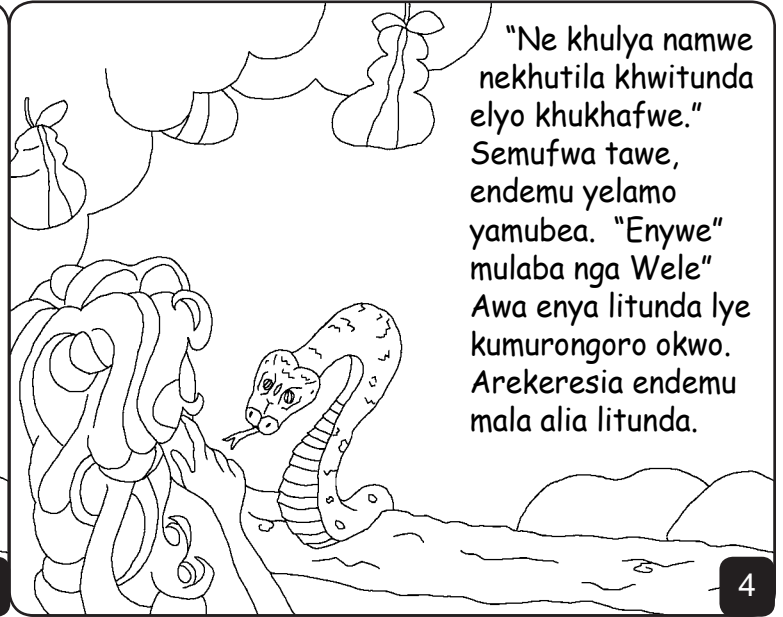


2



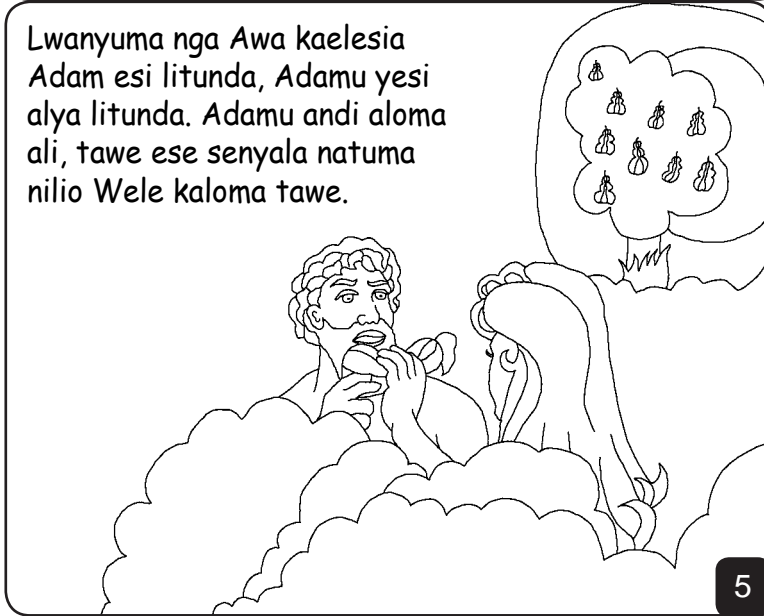
"Ngali Wele aloma ali mukhalya kamatunda khumurongoro kwosi kwosi?" Endemu ya reba Awa. Khunyala khwaliya buli litunda nakakhali lilala, elamo.

3



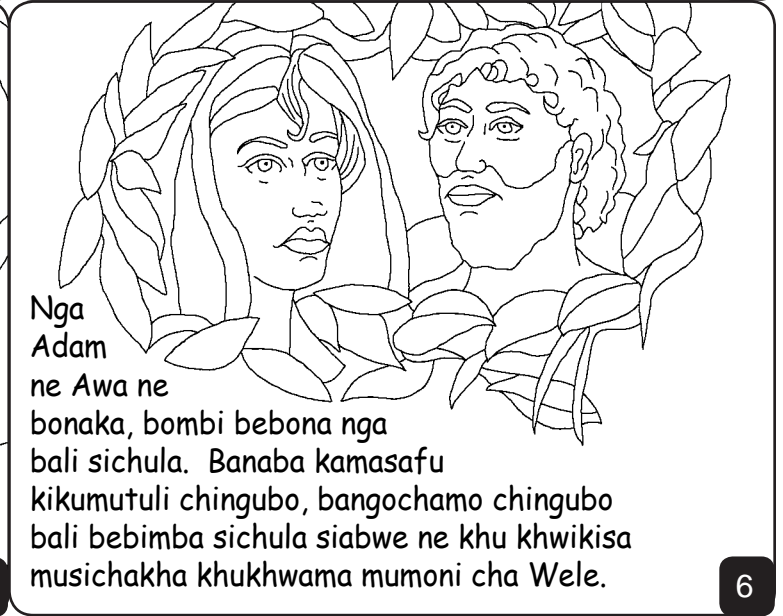
"Ne khulya namwe nekhutula khwitunda elyo khukhafwe." Semufwa tawe, endemu yelamo yamubea. "Enywe" mulaba nga Wele" Awa enya litunda lye kumurongoro okwo. Arekeresia endemu mala alia litunda.

4



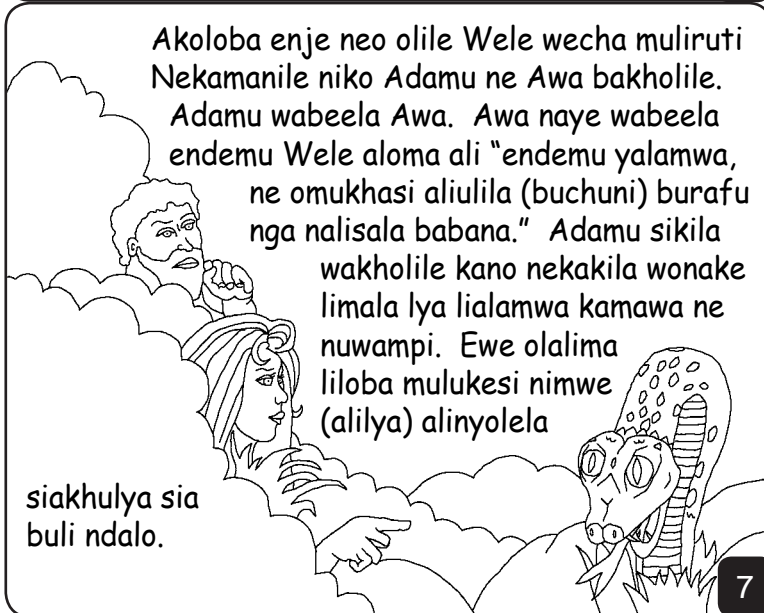
Lwanyuma nga Awa kaelesia Adam esi litunda, Adamu yesi alya litunda. Adamu andi aloma ali, tawe ese senyala natuma nilio Wele kaloma tawe.

5



Nga Adam ne Awa ne bonaka, bombi bebona nga bali sichula. Banaba kamasafu kikumutuli chingubo, bangochamo chingubo bali bebimba sichula siabwe ne khu khwikisa musichakha khukhwama mumoni cha Wele.

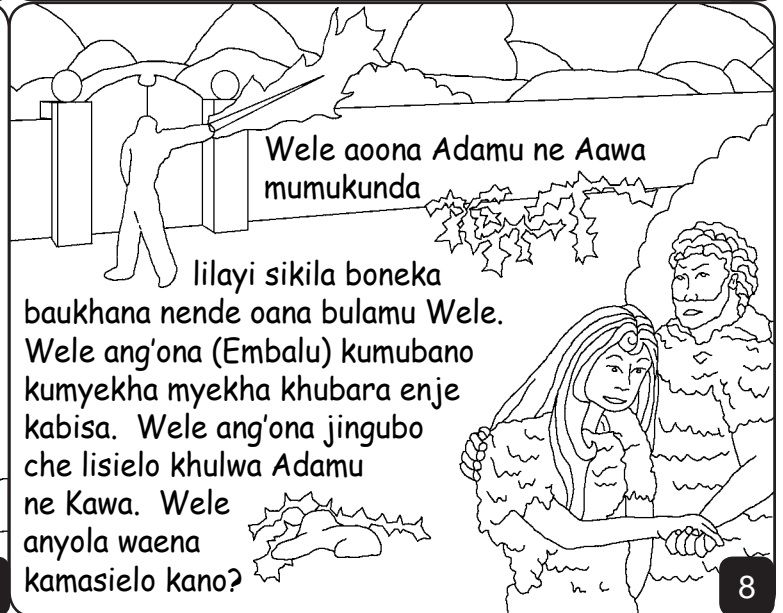
6



Akoloba enje neo olile Wele wecha muliruti Nekamanile niko Adamu ne Awa bakholile. Adamu wabeela Awa. Awa naye wabeela endemu Wele aloma ali "endemu yalamwa, ne omukhasi aliulila (buchuni) burafu nga nalisala babana." Adamu sikila wakholile kano nekakila wonake limala lya lialamwa kamawa ne nuwampi. Ewe olalima liloba mulukesi nimwe (alilya) alinyolela

siakhulya sia buli ndalo.

7



Wele aona Adamu ne Awa mumukunda

lilayi sikila boneka baukhana nende oana bulamu Wele. Wele ang'ona (Embalu) kumubano kumyekha myekha khubara enje kabisa. Wele ang'ona jingubo che lisielo khulwa Adamu ne Kawa. Wele anyola waena kamasielo kano?

8

Mubisee lulwibulo lwa salwa khukhwama mu Adamu nende Awa. Omwana wabwe wekhuranga kaini aba omulimi, omwana wakhabili Abeli aba omwaayi. Endalo ndala kaini alerela Wele bianwa bye bibiamo

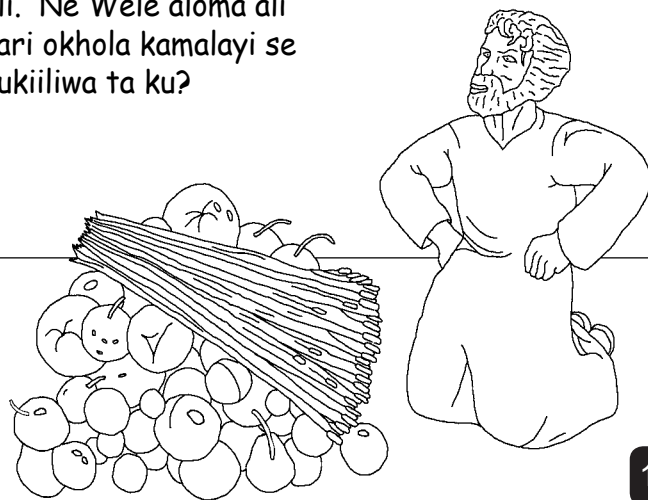
khu sianwa. Apeli areera khukhwama mumakhese (kamamiliwu)

kama nefu khuba nga sianwa siewe khu Wele. Wele (asimisibwa) asangalila sianwa sia Abeli.



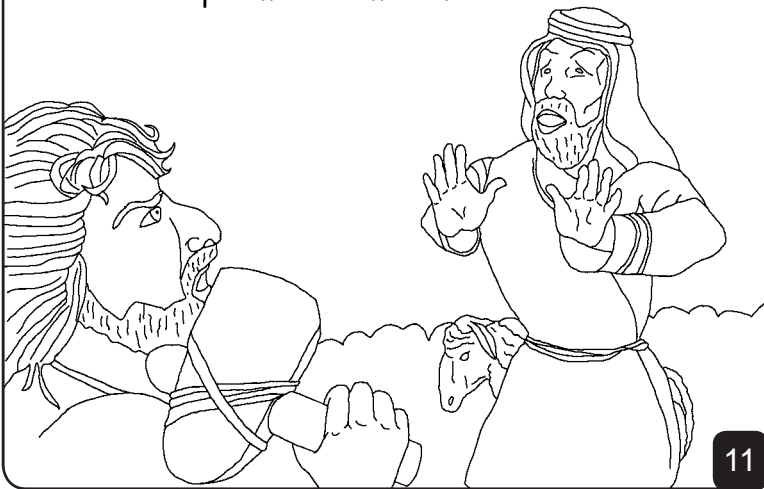
9

Wele seasimisibwa ne sianwa sia Kaini tawe. Kaini akhalala lukali. Ne Wele aloma ali wabari okhola kamalayi se olafukiiliwa ta ku?



10

Lirima lya Kaini selia muluramo lyacha ta, Bise bya birawo lwanyuma ne bali eyo mumukunda kaini abwaakaka Apili maku kamwira.



11

Wele areba kaini ali, "Wandayo Abeli aliwaena?" Ese semanya ta, Kaini (welamo) abea. "Ese niyo omulindi wewe?" Wele awa sinyasio Kaini, khumurusiakho kamani ke khulima amukhola aba omuuauuyi.



12

Kaini arura ebwene wa wele. Abeya khukhwama khubakhana ba Adamu nende Awa bakhusia lulwibulo. Khangu akho babejukhulu ne bisoni bya Kaini bechusia sirimba nisio achakisia.



13

(Mbesio) lwanyuma lulwibulo lwa Adamu ne Awa lwabalaa khangu mundalo echo, babandu (buleyi) lukali khukhilakho jindalo chino.



14

Bise nibyo omwana wewe owesisoledi
sezi asalwa Awa aloma ali Wele esio
sezi musifwo sia ABELI.



15

Mulimala babandu bachililila khuba
bamayaanu nga lulwibulo nelulonda
lulundi, lwa nyuma Wele akhalaka
khurusiawo omundu. Musangi ne
chinyuni chosi Wele esonesia
nga nilwo abumba
omundu



nekakhali
omundu mulala
yeng'ene asimisia
Wele.

16

Omundu yuno bali naaaba owe
lulwubulo lwo sezi naa aba omundu
(omuluungi) okhalimo nende liosi
lia khumwikiichwa tawe
akenda ne Wele.



17

Lundi aba nasomya basoleli bewe
bataru khuba ne liria khu Wele,
Abwenao Wele apanga khurumikhila
Nowa mungila engeni ne
mungila endeyi.



18

Khuranga khwe sibela sio mundu

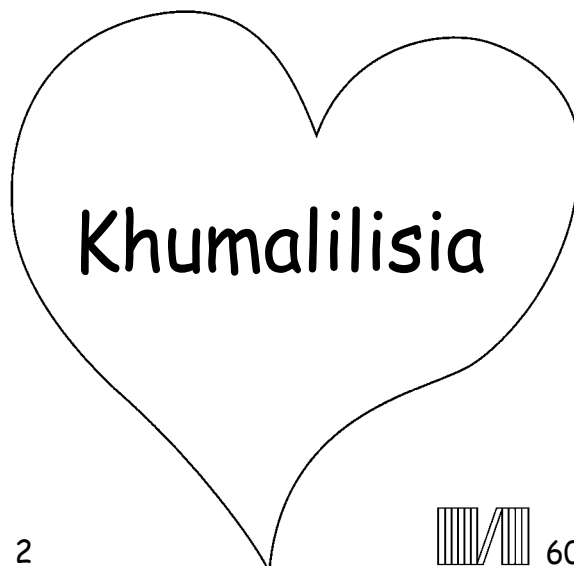
Lukano khukhwama mwikhuwa lie Ebibilia

Linyolekha mu

Lirakikha 3-6

"Khuchakaa khwechilomo chowo chiaana
buwangu." Ezabuli 119:130

19



2



60

20

Ebibilia yino ekhubolela khulugano lwe khuwukia
lwa Wele owakhumba, lundi owekomba ewe omumanye.

Wele amanyile ali khukhola bindu bimayano nibyo niye alangaari
bubwoni. Kumukhamba kwe bubwoni lili lifa, ne Wele kusiima poo
aruma omwana wewe yeng'ene Yesu khukhwaja khufila khumusaba
mala abenie atambibwe khulwe bubwoni bwowo. Lundi Yesu akobola
mulamu lundi acha engo mwikulu. Ewewe nosubira mu Yesu mala
wareba silekhelo sye bubwoni bwowo, niye kana akhole!
Niye anecha amenye mwiwe aluno ano, ne wewe nawe
okhamenye nenaye mindali namindali.

Nekaba mbo wafukikile oli bano bung'ali, loma kano khuwelu;
omusiime Yesu ese esubira ndi ewewe oli Wele mala wakalukhana
waba umuundu khufa khulwe bubwoni bwange neluno luri ewewe
omenyile oli omwami lundi. Nono nosiima yija mubulamu bwange mala
umbele bubwoni bwange, niobe nebulamu buya luno neli ne endalo
ekindi ekheje mbe nawe mindali na mindali. Jende khune ewewe
mala menyesikila ewewe ngo omwana wowo. (Amina) yee.

Soma ebibilia mala obenga buli endalo oloma
lama nende Wele. Yohana 3:16