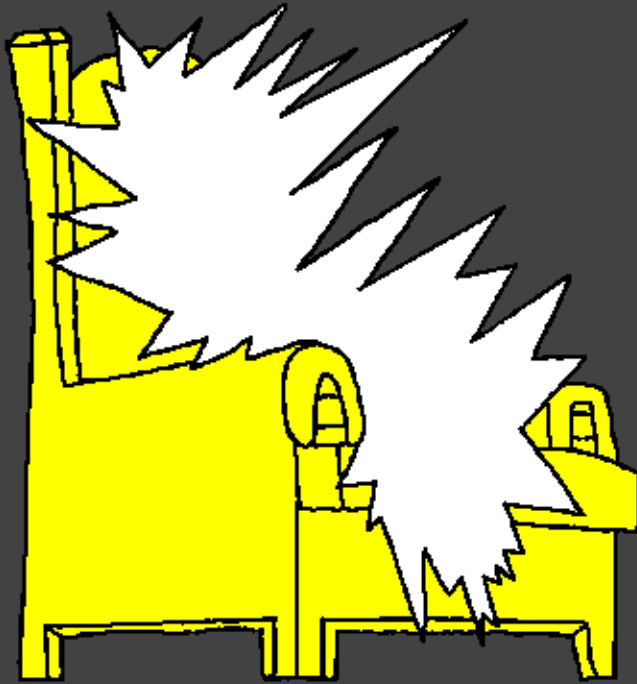


# Ebibilia ye babana Yokesia



Mwikulu nio  
engo  
esimisia wa  
Wele



Yaandibwa nende: Edward Hughes

Yokesebwa nende: Lazarus  
Alastair Paterson

Yabukulibwa nende: Sarah S.

Yakalukhasibwa nende: Nicodemus Wokuri

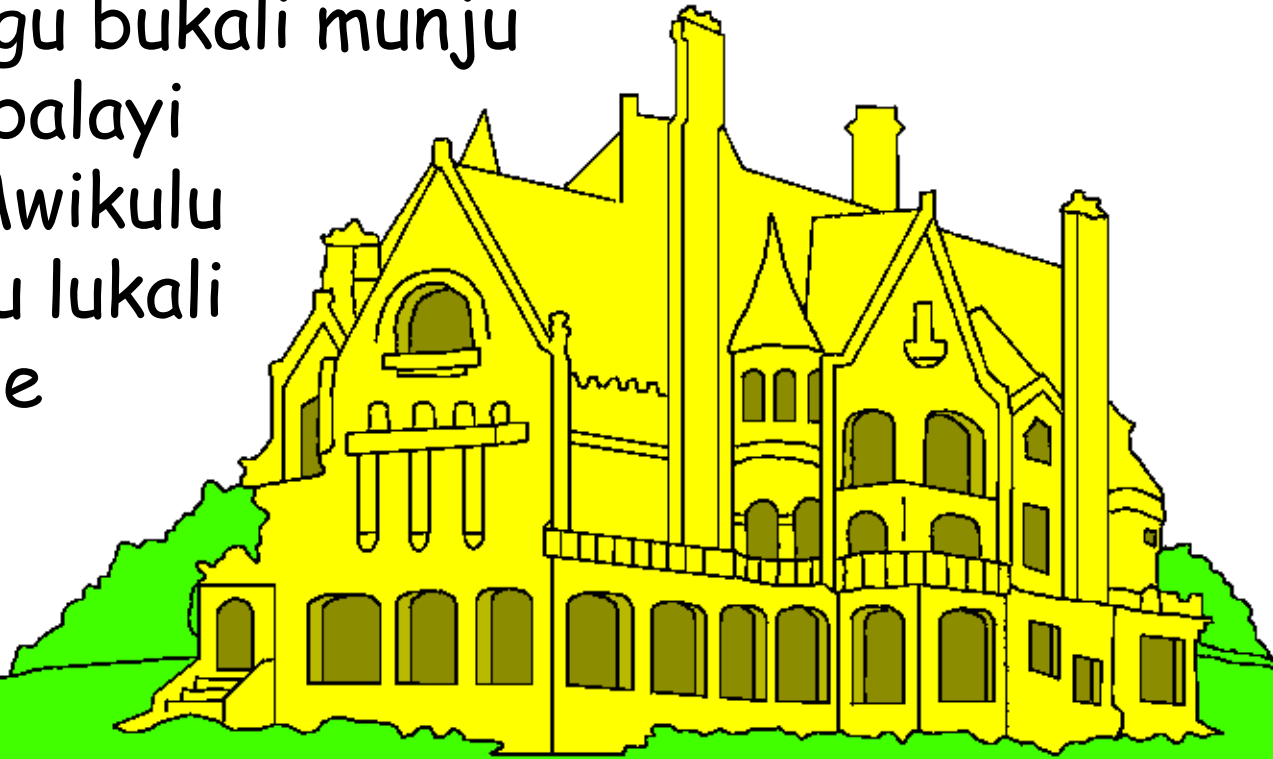
Yarusibwa nende: Bible for Children  
[www.M1914.org](http://www.M1914.org)

©2020 Bible for Children, Inc.

Khufukiliwa; Ewewe oli ne bung'ali bwe khurusia namwe  
oandike lukano luno, neba mbo sio lakusia tawe.



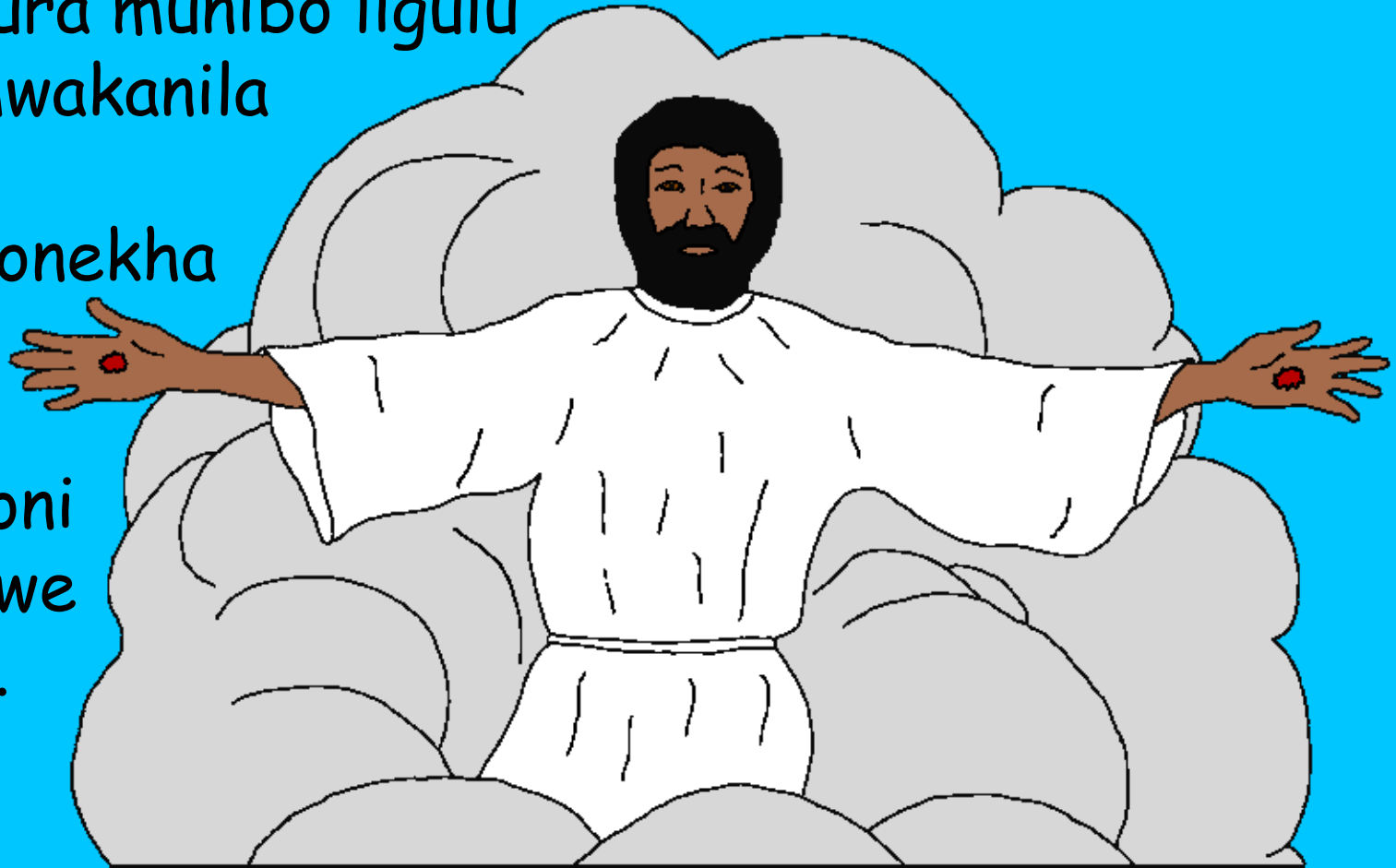
Nga Yesu ne amenyanga musibala babeeka barumwa kaboleta bewe khulondekhana ne mwikulu. Alangalanga likulu ali Enju ya paapa lundi aloma bulimo bubweyangu bukali munju emboofumala embalayi esiimisia engo. Mwikulu mubalaayi mumiliu lukali khukhil chingo che musibala muno.



Yesu ababolela ali ndikhenja khumung'onela  
bubweyangu ne kaba bali, ekha kobole lundi  
emwakanile ewange samwene. Yesu kaacha mwikulu  
lwanyuma lwe khukhwinyukha kukhwama mubafu ta.  
Nga babeeka bewe balolelela nga Yesu nabukulibwa  
khurura munibo ligulu

lya mwakanila  
mala  
khubonekha

lundi  
mumoni  
chabwe  
tawe.



Khukhwamila aoo basuubili bakhebulila nga kabalaka  
ali alikobola Yesu nio aloma ali ndikobola mubukule.

Yesu aloma ali ndicha nomukhanya tawe, nga  
mbao awunindile ta, ne basuubili bafwa na  
akhakobola? Ebiblia ebola eli  
bacha bulungifu khumenya  
nende Yesu. Khutambao  
mumubili, nikhwo  
khuba nende  
Omwami.

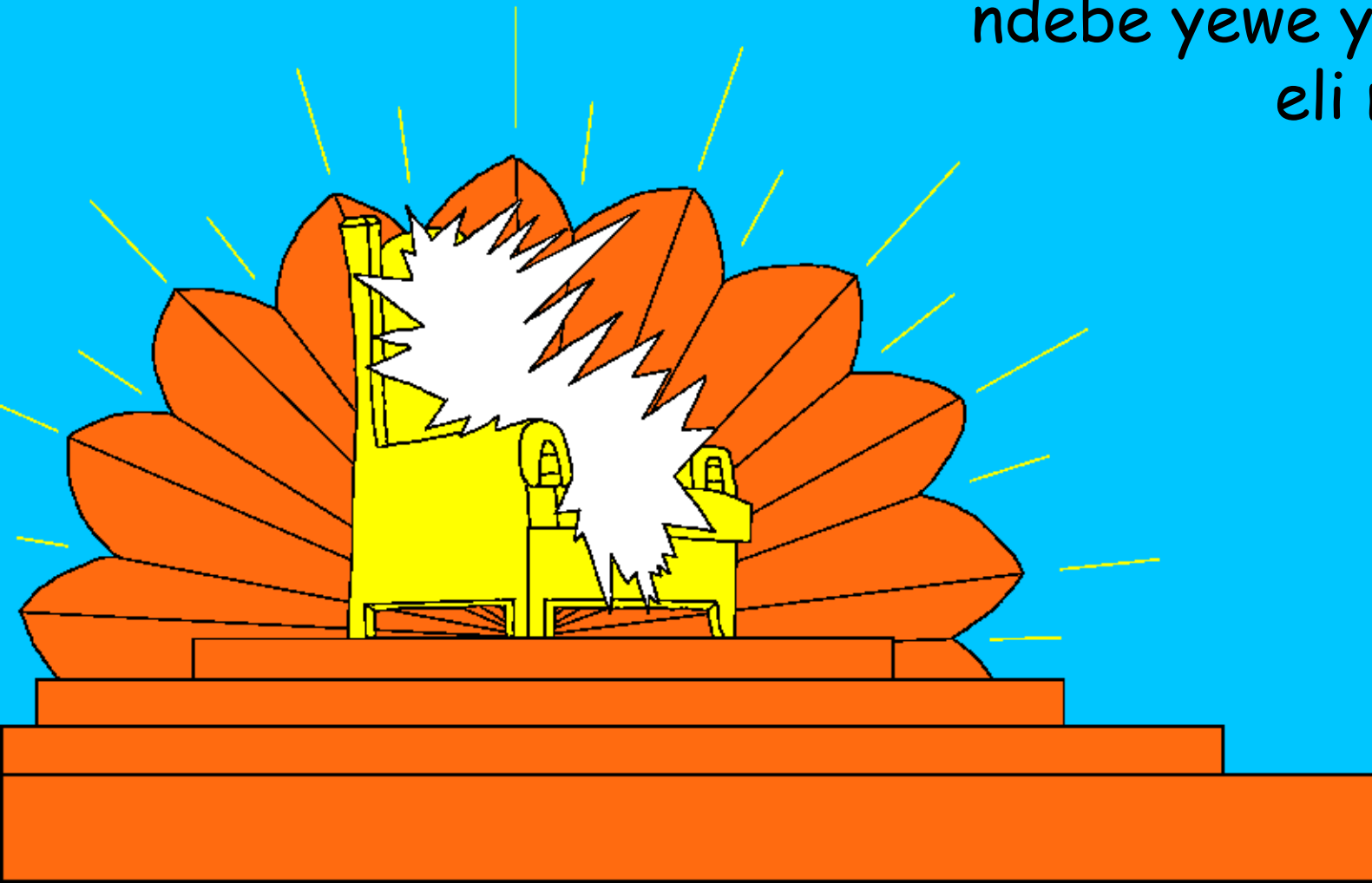


BIANIBWA  
NENDE OMWAMI



Lifunulwa nisio sitaabu simalilisi mubibilia  
sikhubolela khuukia khwe likuli nga nelili. Sili sibofu  
lundi siekhuukia, sili mbo. Likulu eli engo wa Wele.

Wele ali buli abundu ne  
ndebe yewe ye buruki  
eli muukulu.



Bamalaika nende bibumbe  
bibindi bisaaya Wele mwikulu.  
Nono kario khu baandu ba  
Wele babafwa bacha mwikulu.  
Bemba chilili kimyenya kie  
khufumia Wele.

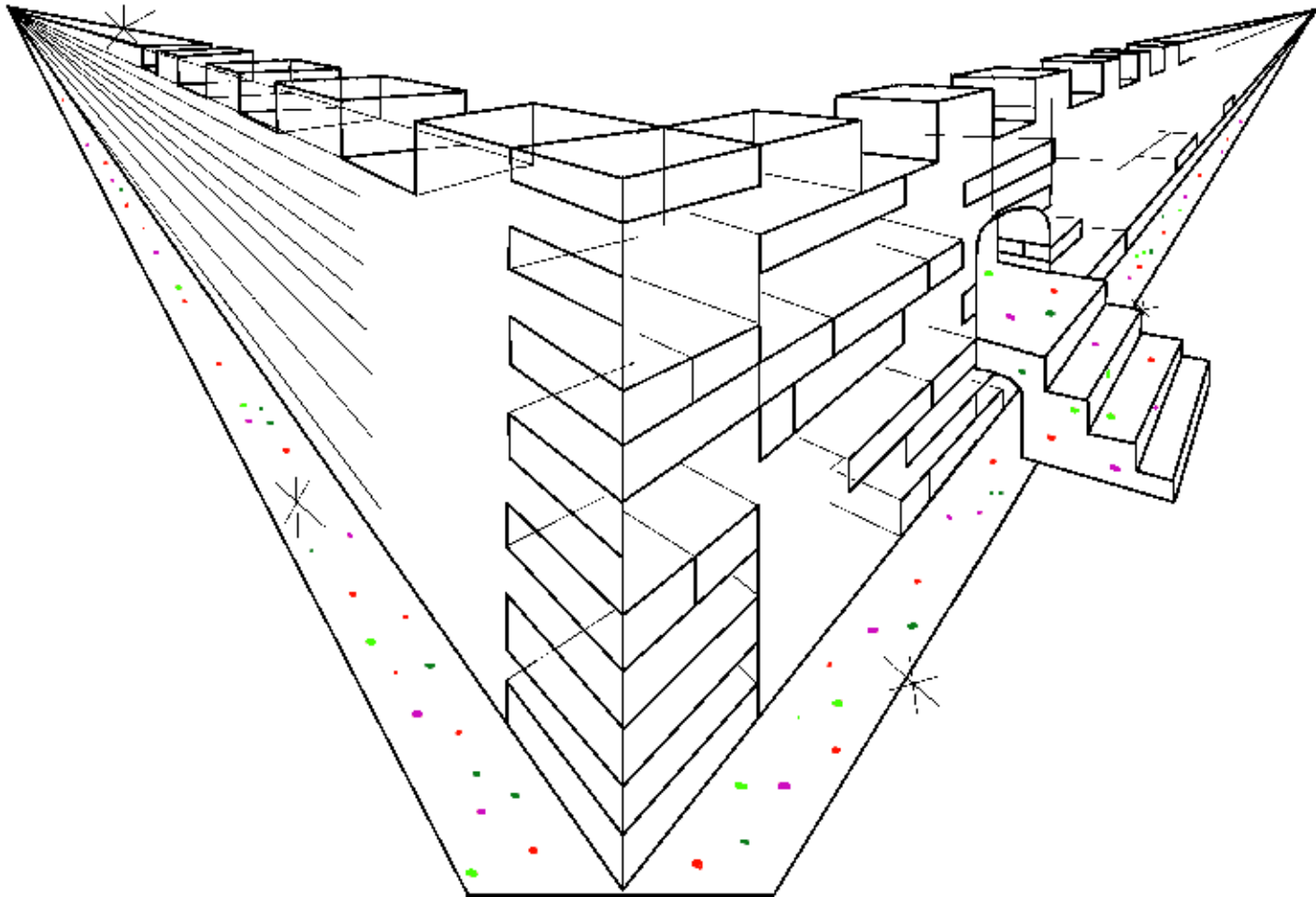


Ano kilivo kamakhuwa malala ke kimienya niko  
beembanga: EWEWE WOOLAANA KHULWE  
KHUKHUKULA NE KAMAFUKI  
KOO KHUKHWAMA MUKHOLO  
NENDE MUBIBALA MALA  
WAKHUKHOLA BARUKI  
LUNDI BABELWACHI  
BEEANGAKI  
BA WELE  
WEFWE  
(Khuf 5:9)

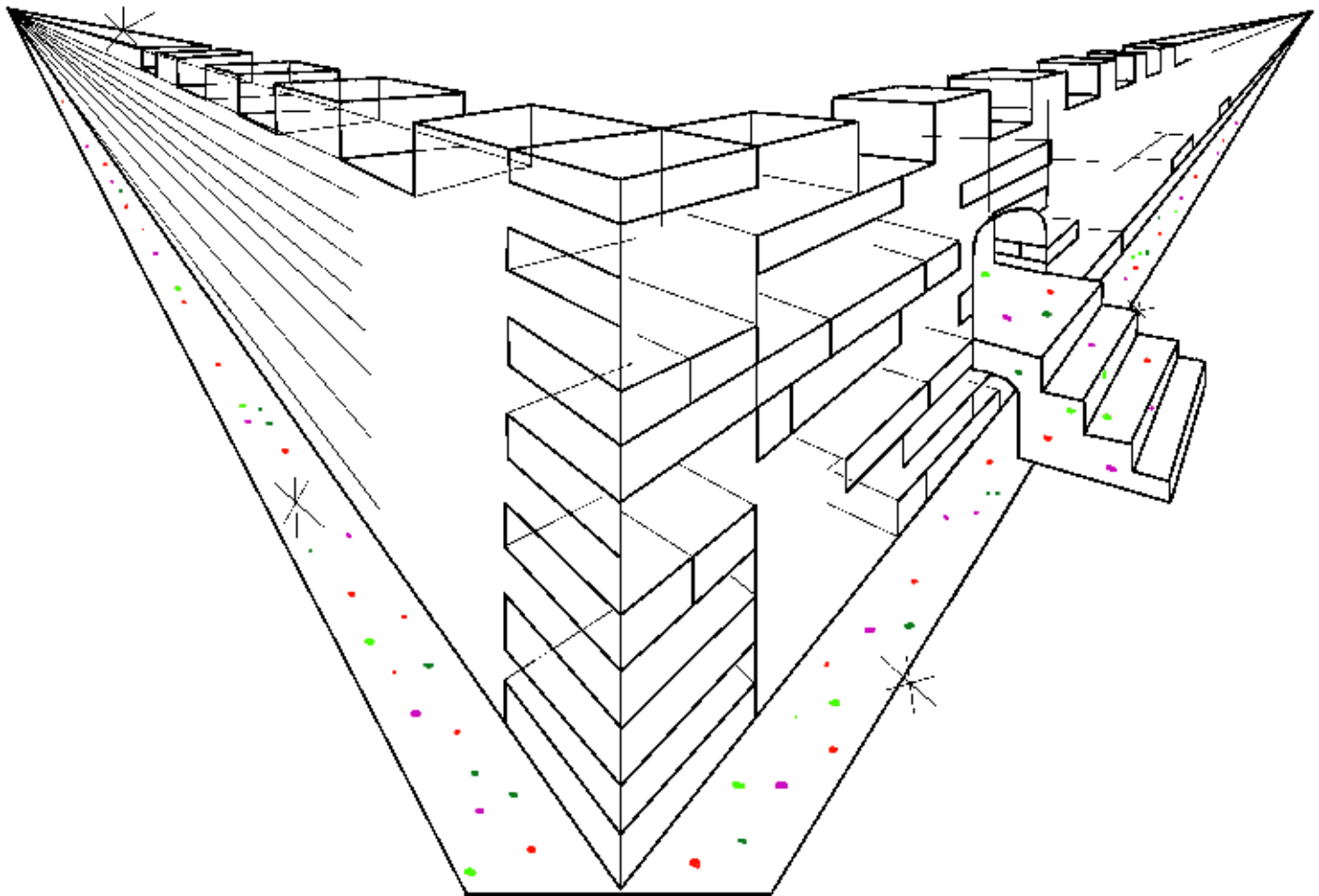




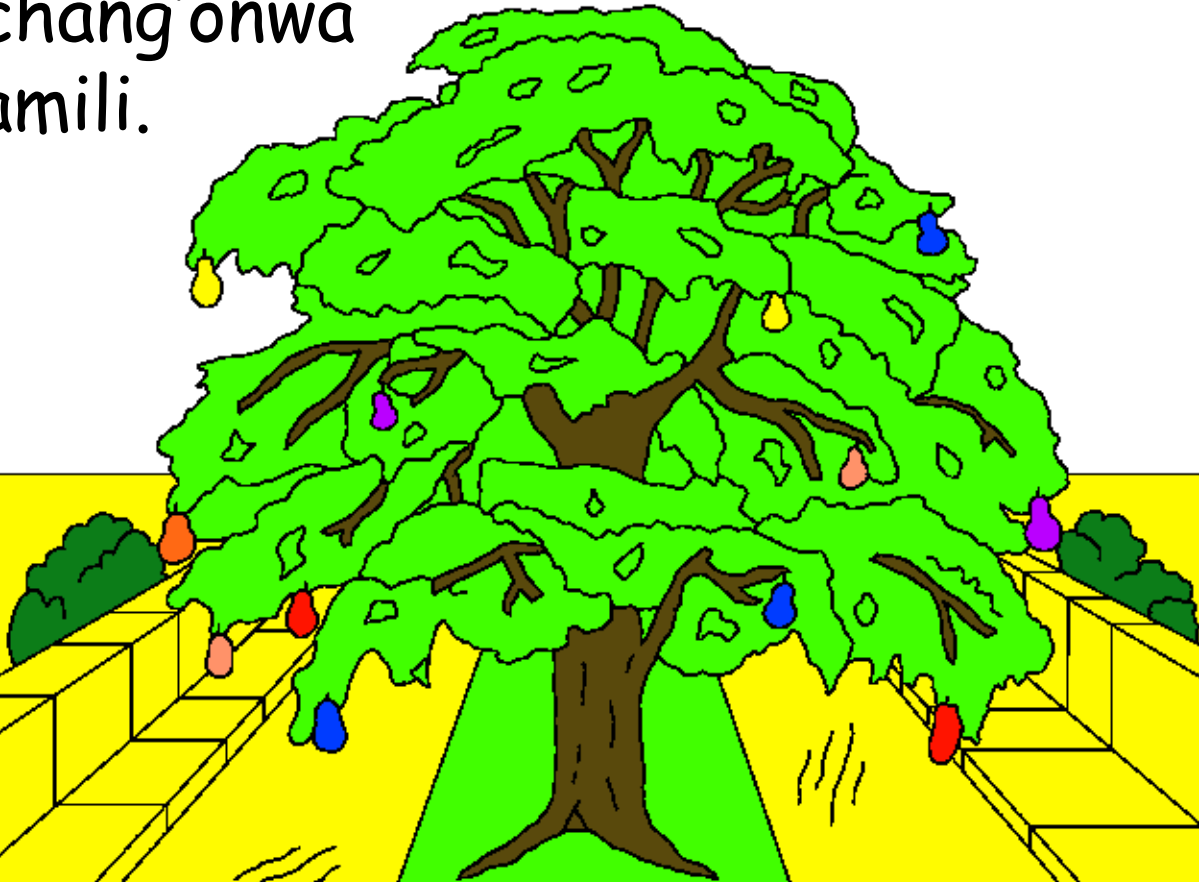
Chipabulo chimalilisi che' Biblia chiibala likulu khuba  
"Yelusalemi Engeni" eli eengali lukali nende lisisi  
lileyi enje. Ne lisisi lino lili lye kamabale  
kamenuukha kamamiliuu nga ekilasi ewanga  
echwenufu chwe.



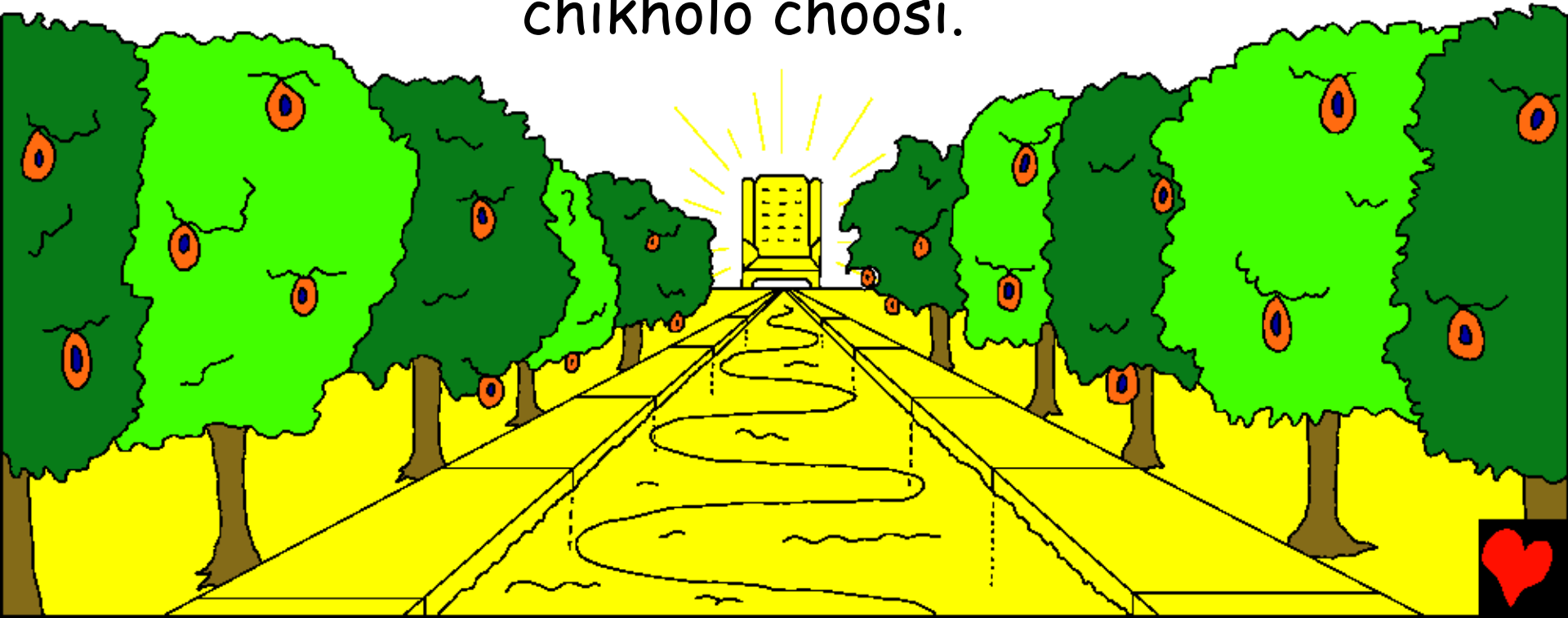
Niko kamala kelubanjango lwe lisisi elyo nga  
limieuukha mieuukha bulayi. Buli bilibwa bye sirimba  
bya ng'onwa mu lulu ndala echwenufu embofu.



Bilibwa byekhuukia ebyo sebabikalangao tawe.  
Khakhuche mukari kubone... EEE likulu limiliu  
khukhilakho. Sirimba sia ng'ona nende kamamili  
kang'one nga sikombe siwanga chwe. Akhaba chingila  
choosi chang'onwa  
ne kamamili.



Lumiliuu, luluchi lwe kamechi ke bulamu kachichukha khukhwama mumwimubeebee bubwami kwa Wele. Khu mbeka chombi che luluchi kumurongoro kwebulamu kwabao, kukwabao muliruti Iya Edeni. Kumurongoro kuno kuli nganga kwama katunda, mubiise chingano khumi na chibili, lukano lulala kumwezi mulala. Ne kamasafu kekumurongoro kwebulamu kali kamalesi chikholo choosi.



Mwikulu bali enya buwanga bwe nyanga namwe  
kumwezi tawe. Bukhumi bwa Wele omwene aliba  
bwabwe siilo sesiliibayo tawe.



Akhaba chisang'i che mwikulu sechifwanana tawe.  
Choosi chimbaaa lundi chili nebusiime. Namunyu ne  
kamakhese byaiila bunyasi alala. Akhaba chisimba  
chindafu chaya bunyasi nga chieei. Omwami aloma  
ali mbao kuumisia ne khusiasa mu butakatifu  
lwange lurabora tawe.



Nekhulola chimbeka chosi khubona khuli bino  
bibindu bilala bikhali mwikulu tawe.



Mbayo kamakhuwa keririma kakaulikhanayo tawe,  
mbayo khukupana namwe chinge, mbayo chikofulo  
khunjiki ta, nekakila mbayo babefwi mwikulu ta,  
mbayo babeyi,

baberi,  
balosi,  
namwe  
babooni  
boosi,  
mbayo  
bubooni  
bwe  
lukano  
lwosi tawe  
mwikulu.

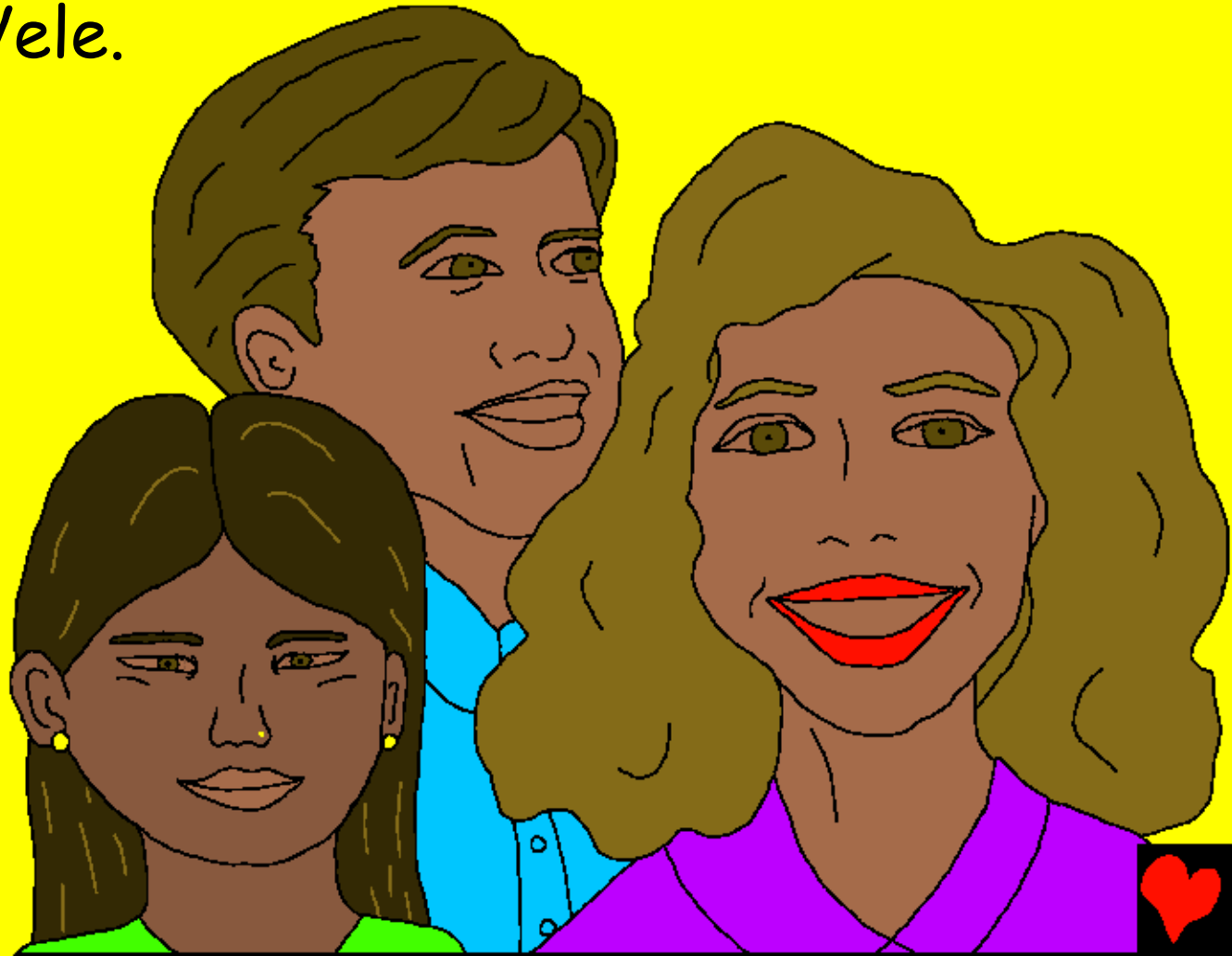




Mwikulu nende Wele  
mbayo kamasika. Bise  
bibindi babaandu ba  
Wele balila sikila  
sinyakhano mubulaamu  
buno. Mwikulu Wele  
akheye kamasika koosi.



Lifwa mbayo mwikulu, lundi, Babandu ba Wele bakhabeo mindali no omwami. Mbayo sibela, mbayo khulila, mbayo buchuni mbayo bulwale, mbayo kamasika buli muundu mwikulu aliomusangafu mindali na mindali ne Wele.

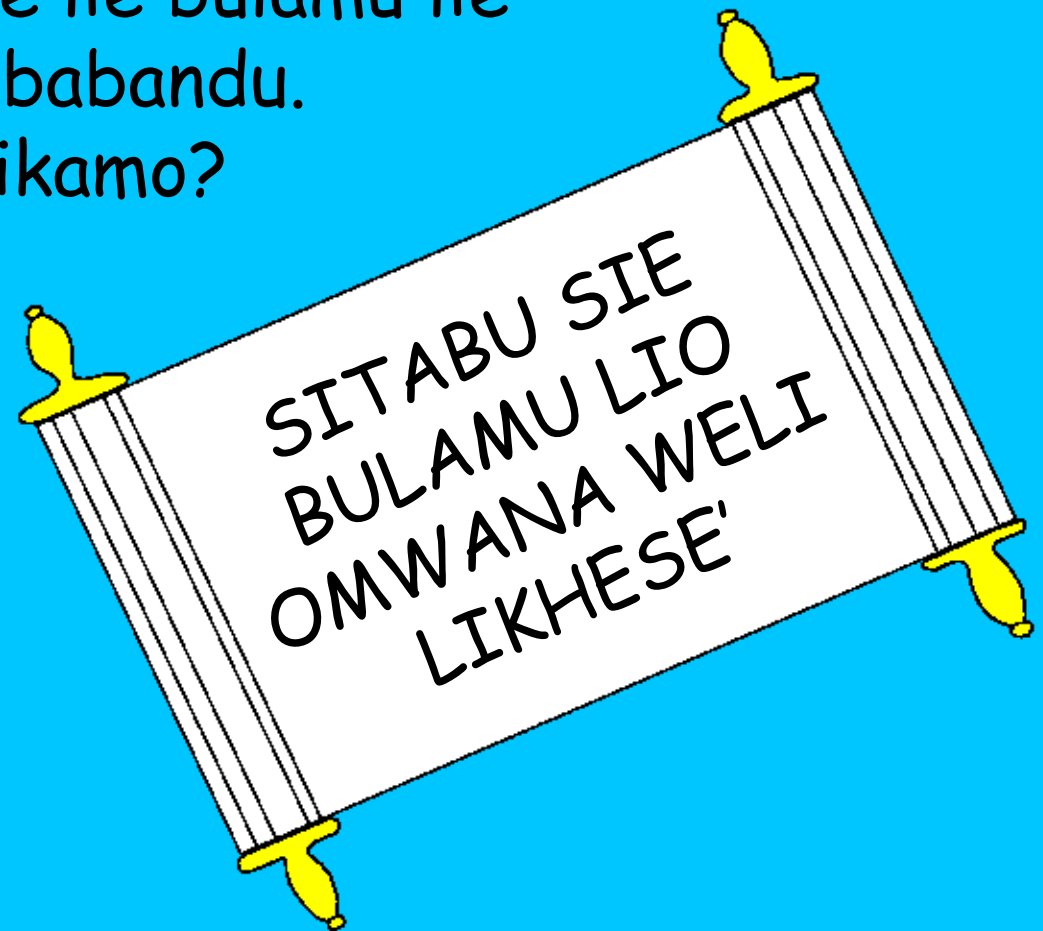


Bulayi bwa kosi mwikulu muli mwebaele be sisoledi  
nende basikhana (nende bakhulile boosi) babasubila  
mu Yesu kiristo khuba omwami ne bamuria nga  
Omwami wabwe. Mwikulu mulimo sitabu abasilanga  
bali mwana we likhese lie bulamu lie  
yichula kamasinaa kebabandu.

Kamasina niko baandikamo?

Babandu bosu baraa  
lilieikina lyabwe  
mu Yesu.

Ne lisina lioo  
liosilimo?



Chilomo chimalilisi che Bibilia khumakhuwa kemwikulu khuli khukhwikhoela khwekhuukia kimoyo nende omwea baloma bali (yicha). Ne yesi owulila loma oli (yicha) ne oyo alinebulesia eche nende oyo owekomba lekha eche abukule kamechi kebulamu busa.



Mwikulu nio engo esimisia wa Wele

Lukano khukhwama mwikhuwa lie Ebibilia

Linyolekha mu

Yohana 14; 2 bakorito 5;  
khubikilwa 4, 21, 22

"Khuchakaa khwechilomo chowo chiaana  
buwangu." Ezabuli 119:130



Khumalilisia



Ebibilia yino ekhubolela khulugano lwe khuwukia  
Iwa Wele owakhumba, lundi owekomba ewe omumanye.

Wele amanyile ali khukhola bindu bimayano nibyo niye alangaari  
bubwoni. Kumukhamba kwe bubwoni lili lifa, ne Wele kusiima poo  
aruma omwana wewe yeng'ene Yesu khukhwaja khufila khumusaba  
mala abenie atambibwe khulwe bubwoni bwowo. Lundi Yesu akobola  
mulamu lundi acha engo mwikulu. Ewewe nosubira mu Yesu mala  
wareba silekhelo sye bubwoni bwowo, niye kana akhole!  
Niye anecha amenye mwiwe aluno ano, ne wewe nawe  
okhamenye nenaye mindali namindali.

Nekaba mbo wafukikile oli bano bung'ali, loma kano khuwelu;  
omusiime Yesu ese esubira ndi ewewe oli Wele mala wakalukhana  
waba umuundu khufa khulwe bubwoni bwange neluno luri ewewe  
omenyile oli omwami lundi. Nono nosiima yija mubulamu bwange mala  
umbele bubwoni bwange, niobe nebulamu buya luno neli ne endalo  
ekindi ekheje mbe nawe mindali na mindali. Jende khune ewewe  
mala menyesikila ewewe ngo omwana wowo. (Amina) yee.

Soma ebibilia mala obenga buli endalo oloma  
lama nende Wele. Yohana 3:16

