

# Demisenninw ka Bibulu

## Jira



Arijina, Ala  
ka so  
numanba



**A sebenna maa min fe: Edward Hughes**

**Jakera min fe: Lazarus  
Alastair Paterson**

**A kerena n'a ye min fe: Sarah S.**

**Kanbayelemara min fe: [christian-translation.com](http://christian-translation.com)**

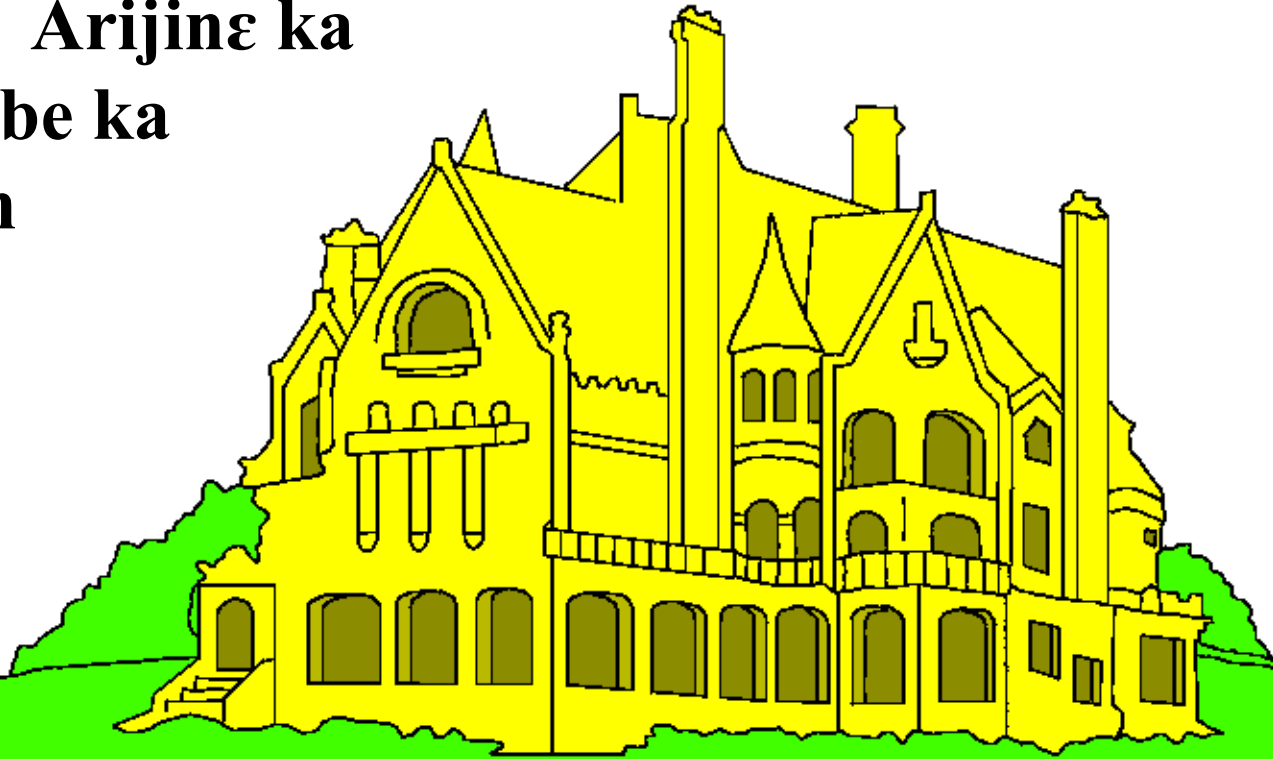
**Bora min fe: Bible for Children  
[www.M1914.org](http://www.M1914.org)**

**©2020 Bible for Children, Inc.**

**Yamariyaseben: I yamariyalen do ka nin baro ladege walima ka seben,  
tuma o tuma n'i t'a jago.**



**Waati min Yesu tun be duniya so sigila A ye arijina ko fɔ a Ka kalandenw ye. A tun b'a wele "N faa ka Du", ani ka fɔ ko du caman be ye. Du ye so bele bele ani cɛɾuman ba de ye. Arijinɛ ka bɔo a cɛkapin kɔsɔbe ka tɛmɛ dugukolo kan so bɛ kan.**



**Yesu ko, “N taara yɔrɔ laben aw ye. Ni ne taara ka yɔrɔ laben aw, n bena segin tugun k’aw sɔrɔ ne yere ka so.”**  
**Yesu taara arijine kɔnɔ yere de, A wulilen kɔfe ka bɔ suw cɛla. A ka kalandenw tun b’A laje tuma min, Yesu taara ka yelen sanfe, kabanɔ y’A la tunu u la.**



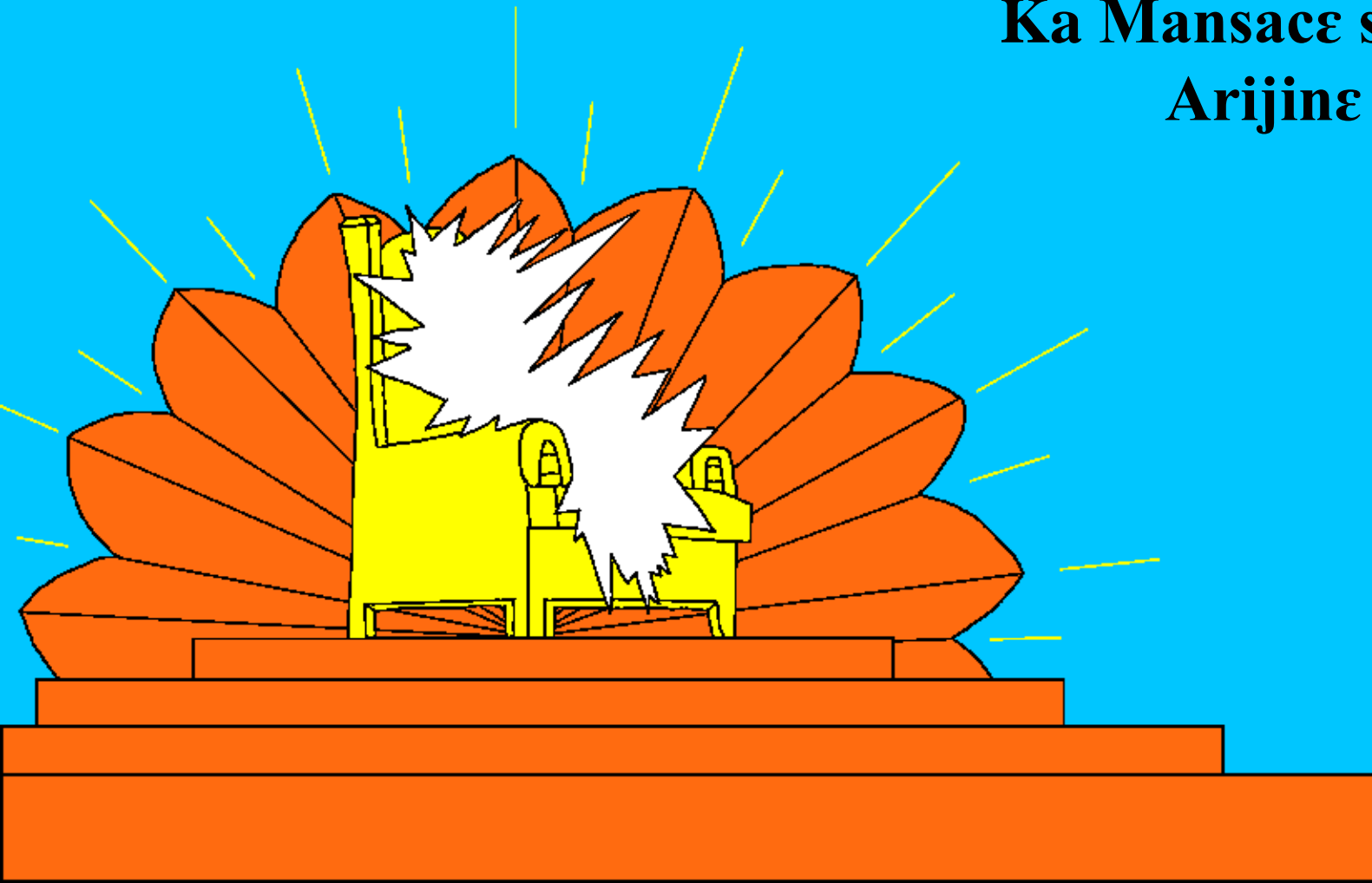
**Ka ta o tuma ma fɔ siisan, Kreciyɛnw hakili jiginna Yesu ka layidula ka bɛ segin ka naa k'u sɔrɔ. Yesu ko k'a be girin ka segin, tuma min maw hakila tun tɛ A ma kɔsɔbɛ. Da Kreciyɛn minw saara ka kon A naali jɛ dun? Bibulu ya fɔ k'u be tile k'a taa Yesu yɔrɔ. Ni nĩ bɔra faarikolo la a be taa Daba Mansa yɔrɔ.**



**KA SɔRɔ NI  
MATIGI YE**



**Lakodonyali, Gafe laban Bibulu kɔnɔ, b'a fɔ an ye ko  
arijinε kapin kojugun. Ale de ye fenw bela pumanba,  
kεcogo min kerεnkerεnnen do kɔsɔbε, Arijina ye Ala ka  
so de ye. Ala be sɔrɔ yɔrɔbε, Da a  
Ka Mansacε sigilan be  
Arijinε de Kɔnɔ.**



**Mελεγεω ni arijineκoηo danfen werew be Ala bato Arijine  
kono. Ala ka maaw min be taa Arijineκoηo u fennen b'o  
de ke. U be Alabatoli donkiliw da. U**

**be donkili minw da do kono kumaw**

**file: E DE KApI SABULA I YE  
ANW LA TUBI KA TA ALA MA  
NI I JELI Boli KABI LA ANI**

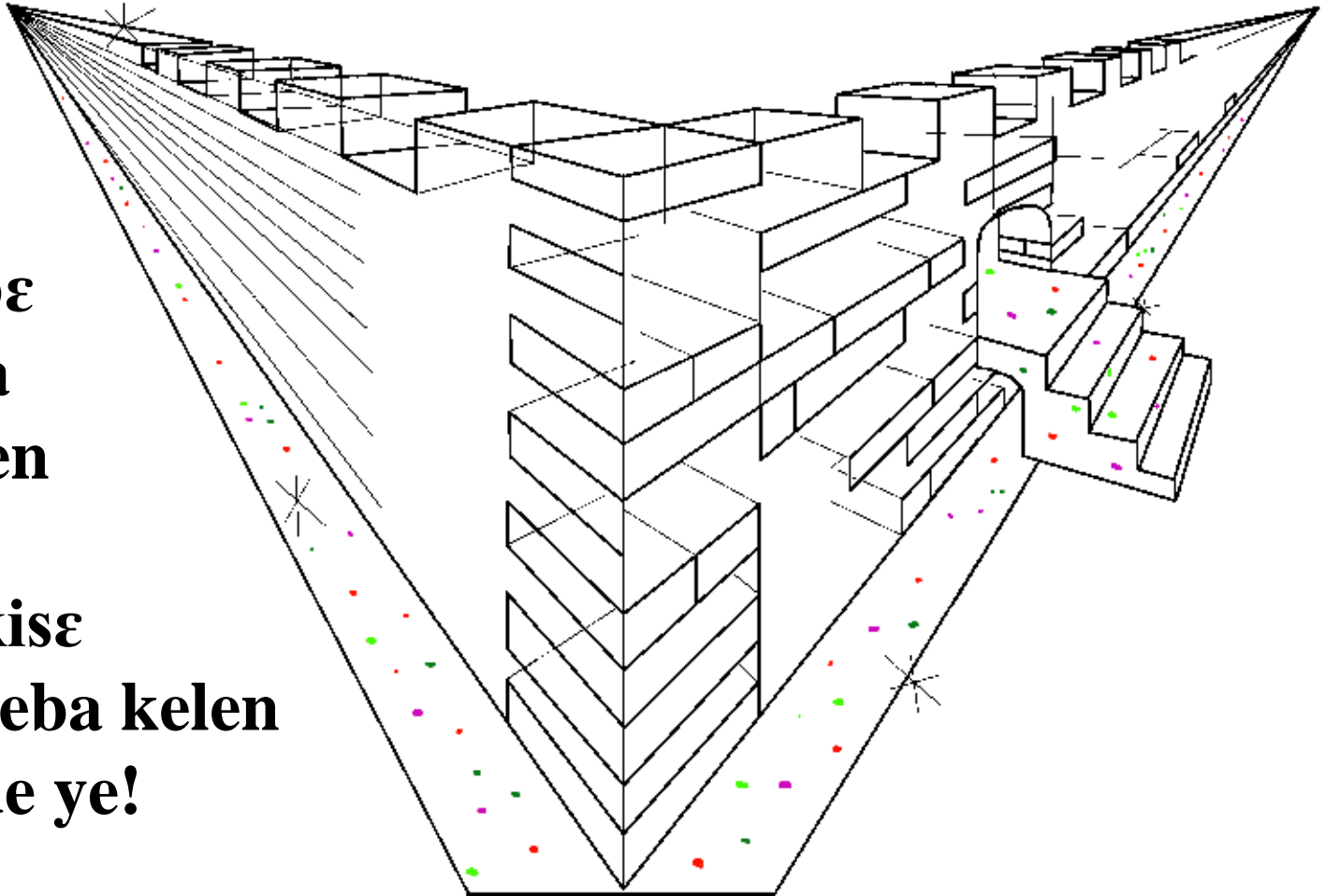
**JAMAN Be LA  
ANI KA ANW  
Ke MANSAW  
NI PRεTRIW  
YE AN KA  
ALA Boli.**

**(Rev. 5:9)**



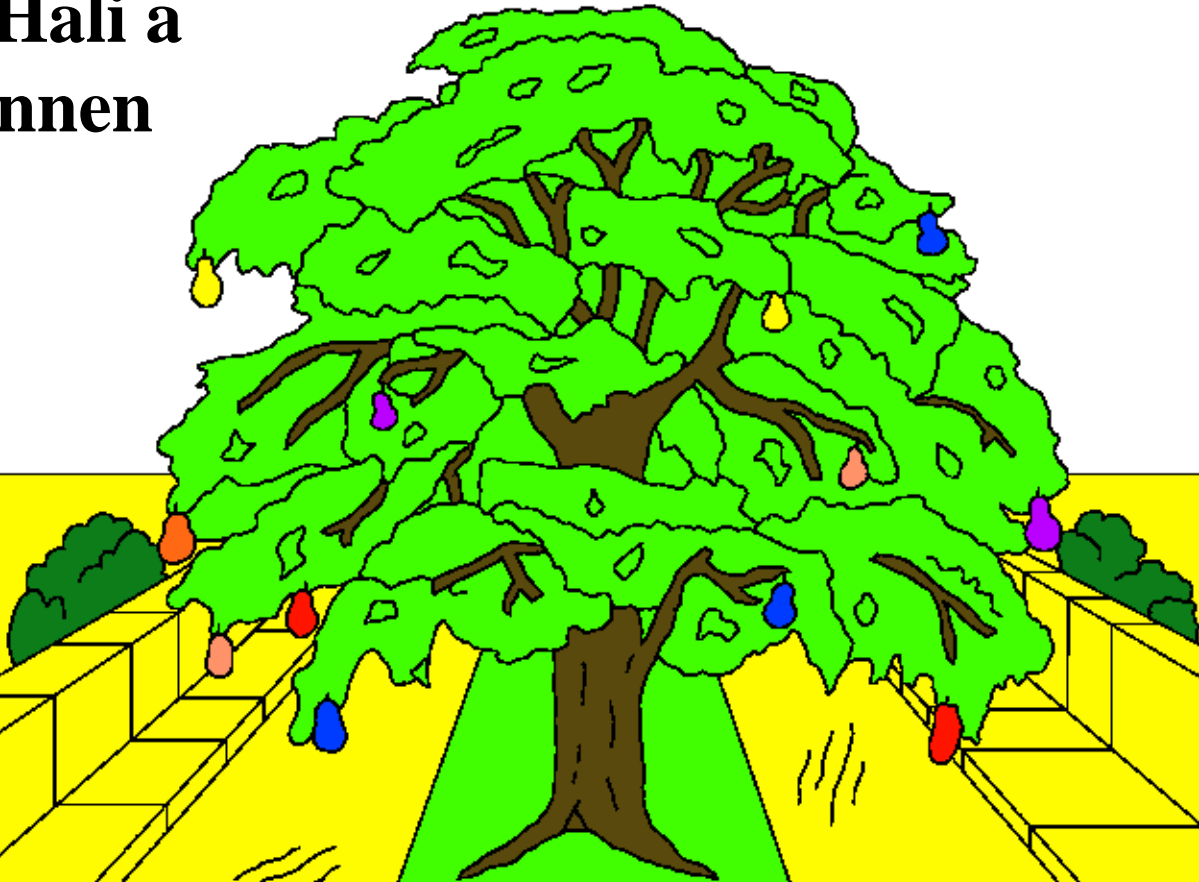
**Bibulu gafefura laban laban be arijine cogo pefo ikomi  
“Zeruzalemu kura”. A ka bo kosobe, ani kenema koko  
jan. Koko jolen do ni Jasper kaba ye, a jelen do ikomi  
kristali. Masirililan ni kuru nafamaw be kogo in  
dugumala datugun, ka yelengun bo ni pe cepumanbaw  
ye.**

**Dugu  
kelen  
kelen be  
dodaba  
dilannen  
do nin  
kononkise  
belebeleba kelen  
pewu de ye!**





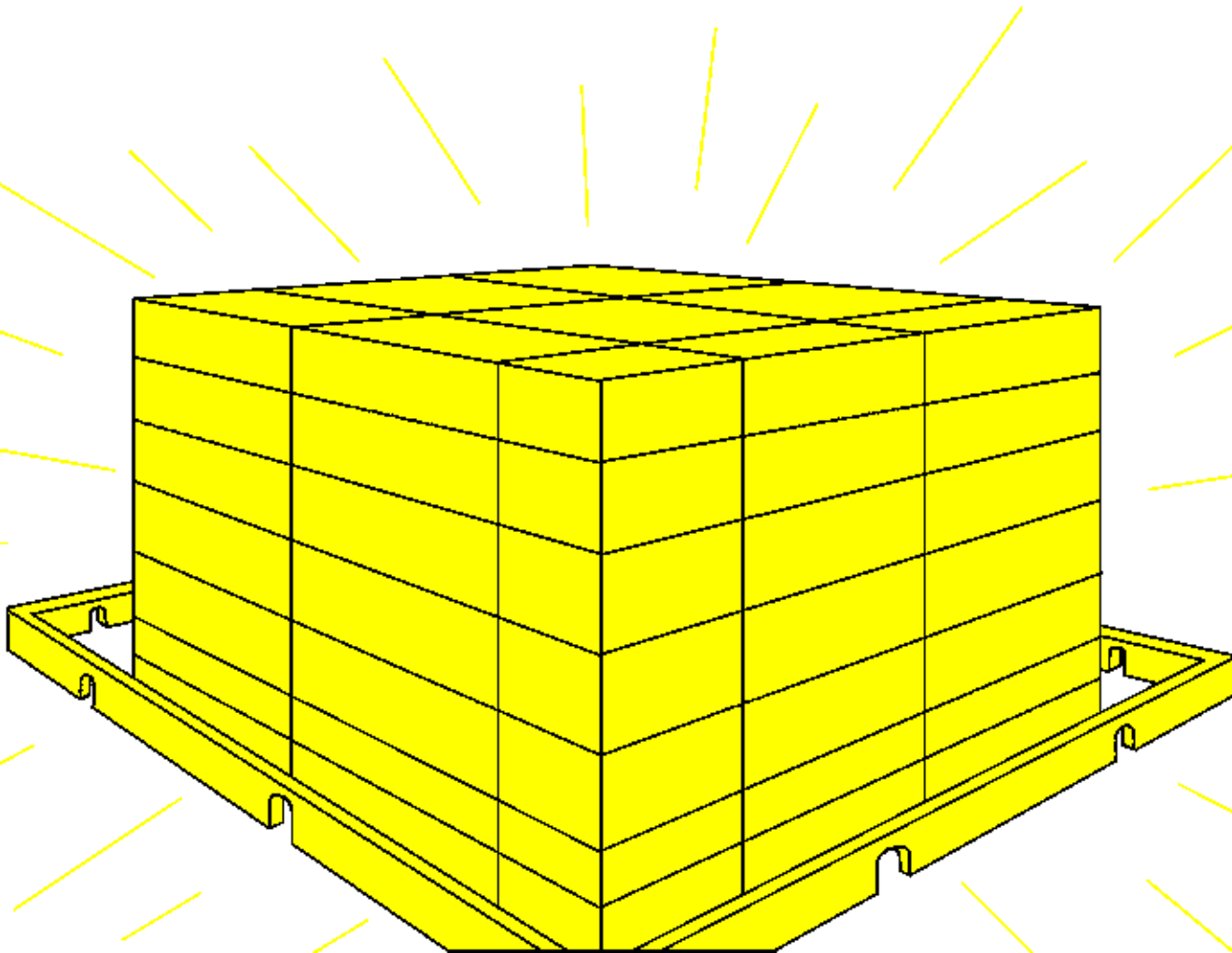
**O Dodaba kɔnɔnkisɛma panamaba ninnu te sɔrɔ  
datugunnen abada. An ka do akɔnɔ ka mununmunun ka  
yɔrɔ lajɛ...WAW! Arijinɛ kɔnɔna ɛɛkapi ka tɛmɛ hali. A  
dugu dilannen do ni sanu lakika de ye, ikomi witri  
jɛman. Hali a  
sira dilannen  
bɛ nin  
sanu ye.**



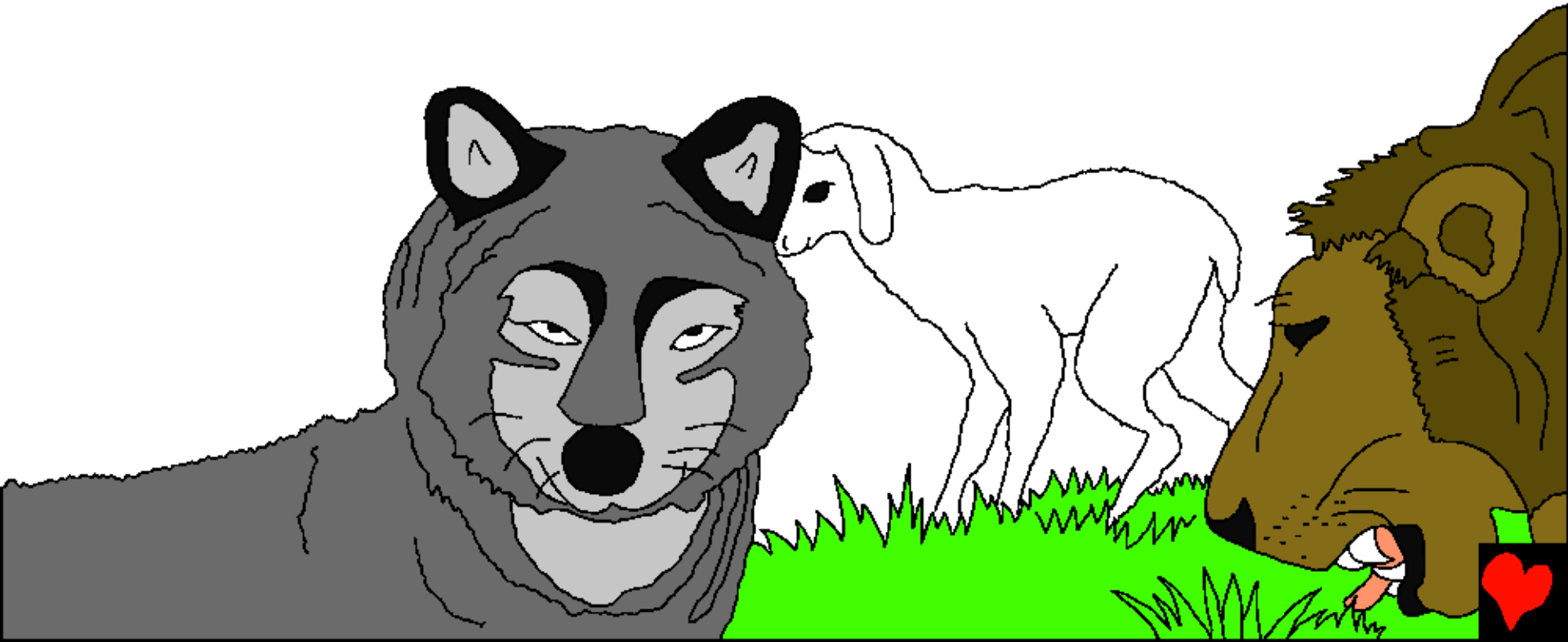
**Ji minta be woyo kɔɔ cɛɾummanba, jɛlen na ka bɔ Ala ka masakɛsigiyɔɔ. Kɔɔ fan don in fɛ nɛmaya jiiri be ye, min tu folofolo sɔɔɔla Edɛni ka Nakɔ kɔɔ. O jiiri in kɛɛɛnɛn do kɔɔɔɛ. A kɛlen be jiiriden fasuguya tannifila di, fasuguya do kal'o kalo. Nɛmaya jiiri in buluw fana ye jamanadenw fura de ye.**



**Arijina mako tɛ tile walima kalo yelen na. Ala ka nɔɔrɔ  
b'a kɔnɔna fa ni yelen cɛpi ye. Yen sufɛla ko te ye nɔ.**



**Hali datanfɛnw te suguya kelen ye Arijina kɔnɔ. U kololen do k’u ladelɪ. Suruguw ni sagadenninw be bin dun ɲɔngonfɛ. Hali waarabaw beka binjalan dun ikomi misi. Mansa Ala b’a fɔ ko, “U manka ka joginnin walima tipɛni kɛ ne ka kulu barikalen inna.”**



**An ye mununmunun ka laje minke, an y'a don ko fen  
dow be Arijina je. Dimi kuma fosi te me. Masi te kele  
walima pangoyake. Sogolan fosi te daw la, ka  
sababuke nso fosi**

**te Arijina kon.**

**Ngalontigelaw,**

**maafalaw,**

**subagaw,**

**walima**

**maa jugu**

**werew te**

**ye. Jurumi**

**suguya fosi**

**te ye.**

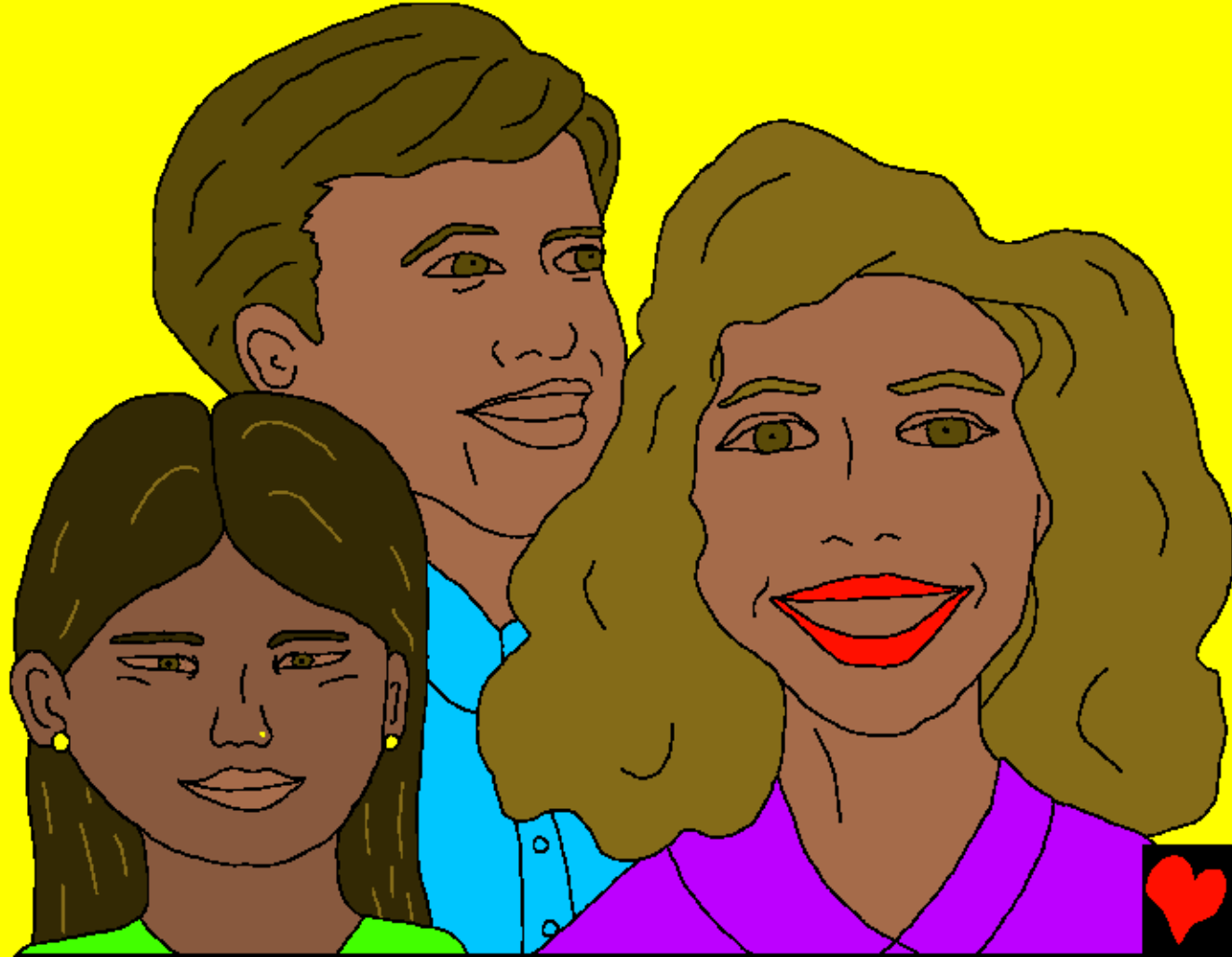


**Arijina kɔnɔ ɲɛjifosi te  
Ala yɔrɔ ye. Tuma nin  
tuma, Ala ka maa bɛ kasi  
ka sababukɛ dusukasi ba  
min bɛ ɲanamaya in kɔnɔ.  
Arijina kɔnɔ, Ala bena  
ɲɛjiw bɛ cɛ ka bɔ ye.**



**Saaya faana te Arijina kɔnɔ. Ala ka maaw ni matigi  
bena ke ɲɔgonfɛ kudayi. Dusukasi te ye tugun, kasi te ke  
tugun, sɛgin te ye tugun. Bana fosi, tagali fosi, sugo fosi.  
Bɛ niisɔndiyalen do**

**Arijina kɔnɔ  
kudayi ni  
Ala ye.**

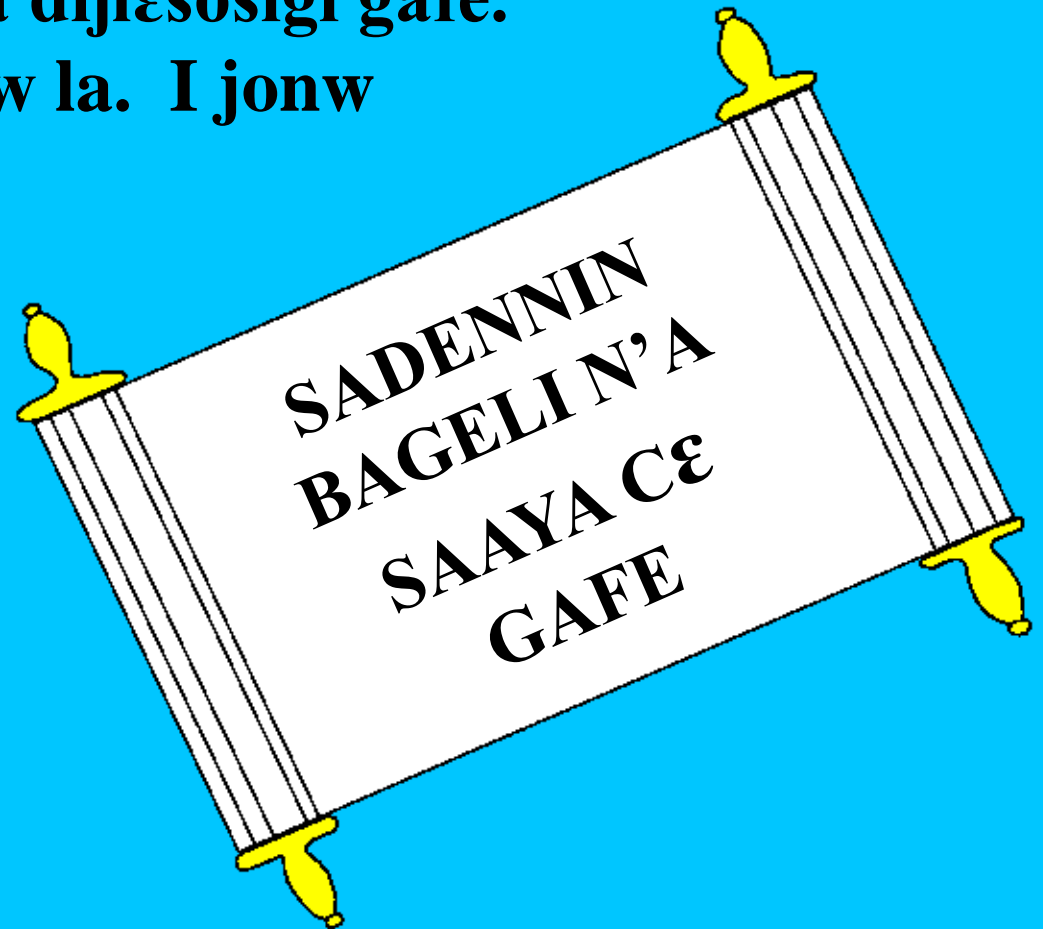


**A be la pumma, Arijina ye ceminenninw ni musomaninw de ta ye (kunbayalenw faana) min daara Yesu Krista ikomi u kisibaga ani k' a A bato ikomi u matigi. Arijina konɔ gafe do be ye min be wele Sagadennin ka dijɛsosigi gafe.**

**A fallen do maaw togow la. I jonw togow sebennen be ye?**

**Maaw minw n'u y'u ka danayada Yesu kan.**

**E togo be ye wa?**





**Biblu ka kuma labanw Arijina kola ye welewelemadali  
ɛɛpin de ye. “Ani mɛlɛgɛ ni kɔɔnɔnmuso ko, ‘Naa!’  
Ani ka to min be lamɛli kɛ o ka fɔ ‘Naa!’ Ani ka to  
minnɔgɔ be minna o ka naa. Ani maa fɛn o fɛn n’a  
yɛrɛ y’a kanu, a to ale ka nɔɔrɔ ji min fu.”**



**Arijina, Ala ka so pumanba**

**Baro min bɔra Ala ka kuma na, Bibulu kɔnɔ,**

**sɔrɔla**

**John 14; 2 Korɛntikaw 5;  
Revelation 4, 21, 22**

**“I ka kuma damine be yelen dii.”**

**Donkili 119:130**



**A banna**



Nin Bibulu nsiirin be an ka Ala pummanba  
de fɔ an ye min y'an dan ani min b'a fɛ an K'Ale don.

Ala b'a don k'an ye ko kolɔn kɛ min n' A b'a wele ko jurumi.  
Jurumi kiti ye saaya de ye, Da Ala b'an fɛ kɔsɔbɛ A ye A  
dencɛkelen pewu ci anw ma, Yesu, ka kasaa kura kan ani ka  
kiribɔ anw jurumiw kɔsɔn. Yesu ka sɔrɔ ka segin ka ni na ka tila  
ka so arijinɛ kɔnɔ! Ni e be daa Yesu la k'i ka jurumiw yafadeli  
a fɛ, A bena o ma! A bena na panamaya I dusukunna siisan,  
o la panamaya kɛ n'Ale ye kudayi.

I e daarala ko nin tinɛ de ye, nin fɔ Ala ye:  
Kanulen Yesu, ne daarila ke ye Ala de ye, min kɛra cɛ dɔ ye ka saa  
ne ka jurumi kɔsɔ, ola siisan E balo tugun. Ne b'I deli ka dɔ ne ka  
panamaya la ani ka yaafa ne ka jurumiw ma, yasa ne na seka  
panamaya kura sɔrɔ siisan, tila ka taa do dɔ ka to ni E ye kudayi.  
N demɛ n ka I bato ani ka balo I ye ikomi I den. Amina

Bibulu kalan ka kuma ni Ala ye dogo do! John 3:16

