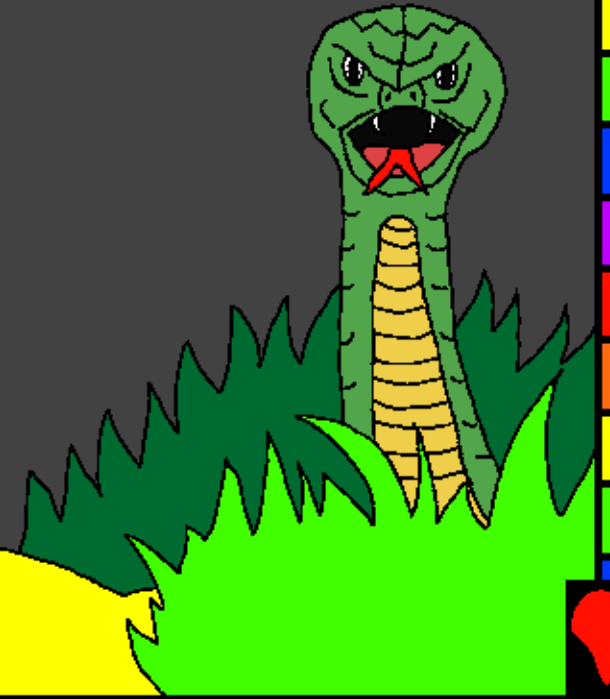


Baibulo ja Wanache
Jikumpela

Kutanda kwa
yisawusyo ya
mundu



Jakulembegwa ni: Edward Hughes

Jakwambulaga ni: Byron Unger; Lazarus
Alastair Paterson

Jajitichidwe ni: M. Maillot; Tammy S.

Jagopolelaga ni: Phiri Williams

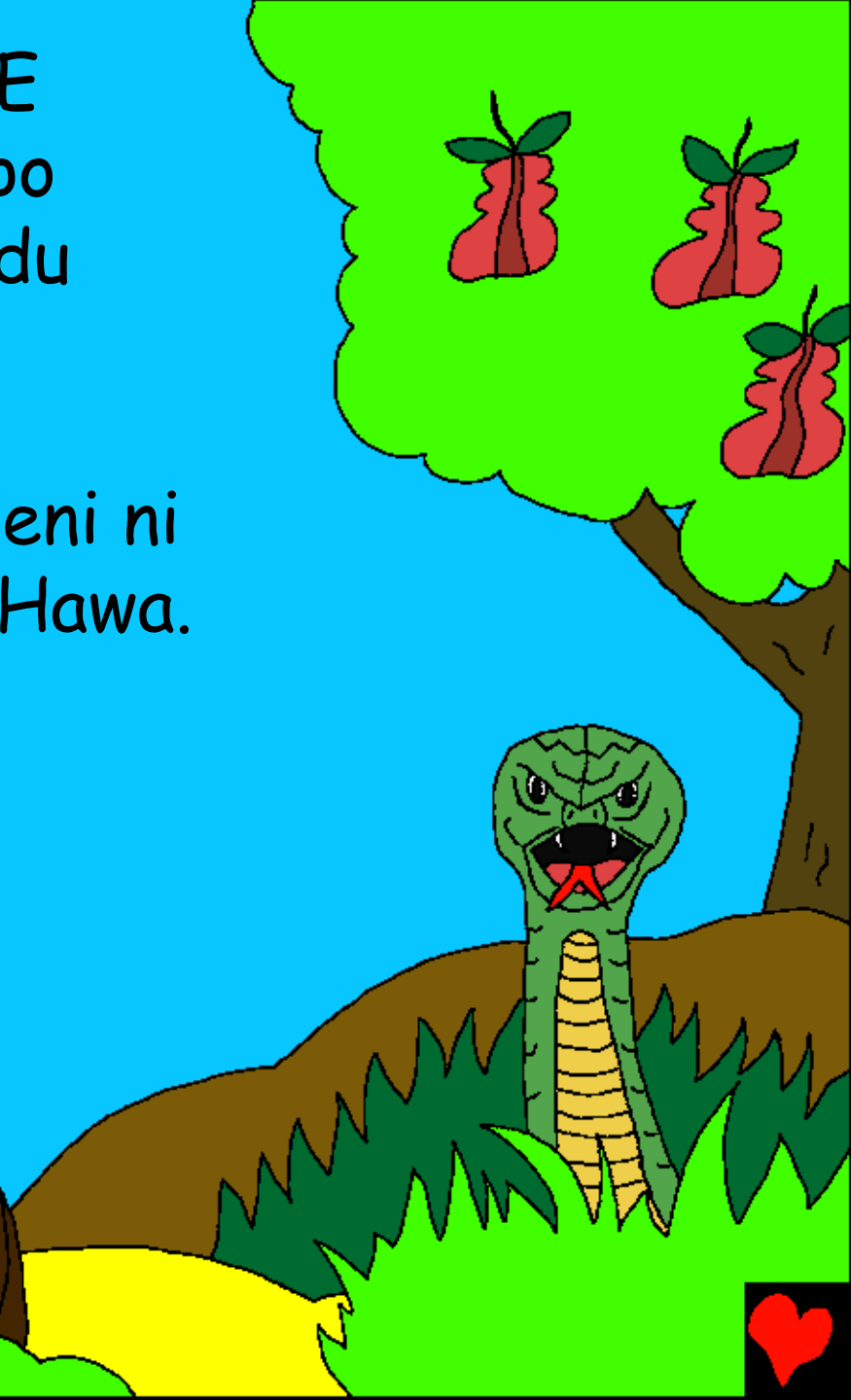
Japanganisigwe ni: Bible for Children
www.M1914.org

©2020 Bible for Children, Inc.

Chikundisyo: Mkwete wukoto wa kulemba kapena
kwambula ndanoji nambo ngasumisya.



MLUNGU WAPANGANYISYE
CHINE CHILICHOSOPE! Apo
Mlungu piwapanganyisye mundu
jwandanda, Adamu, jwalakwe
watamaga mu
mgunda wa Edeni ni
wamkwakwe, Hawa.



Waliji wakusengwa ni
kusimangana kwa Mlungu
pasikati pawo mpaka
lisiku line ...





"Ana Mlungu wamsalile kuti mkalya kutyochela kuyitela yosope?" Lijoka lyamuwusisye Hawa. "Tukomboleka kulya isogosi yosope nambo chimo," wajanjile yoyo. "Naga tukulya kepan kwaya chele chisogosicho, tuchiwa." "Ngasimwa," lijoka lyasisisye.



"Jemanja
timchiwa mpela
Mlungu." Hawa
walakalache
yisogosi
yamchitelachi.
Wajipikanile
lijoka lila ni
walile
chisogosicho.



A Hawa piwatesile
wungampikanila Mlungu
watendekasisye Adamu
kulya nombe nawo
chisogosicho.

Adamu akatite,
"Yiyayi! Une
ngindeka
kumpikanila
Mlungu."





Adamu ni a Hawa piwalemwisye,
wosope wene wamanyilile kuti ali matakope.
Watotile yitonga ni masamba ga mkuju, waliwimbile
achimisyene ni wamjuwile Mlungu mungalango.



Kulimkuisimila ligulo Mlungu wayiche mungundamo. Wamanyilile iwatesile Adamu ni a Hawa. Adamu wanawilaga a Hawa nombe a Hawa walitutilaga lijoka. Mlungu watite, "lijoka lilyesedwe, jwamkongwe tachipikana wululu pandawi jakuti akole mwanache."



"Adamu, pakuwa mtesile
ulemwa, litaka lilwessedwe ni
miwa ni yisomangatinchilaga
mpaka chitukuta kuti mpate
yakulya."



Mlungu wakopwesye Adamu ni
a Hawa mumgunda wakusalala
wula. Ligongo lya
kulemwa kwawo,
walekangene
ni Mlungu
jwakupeleka
wumi.





Mlungu
wapanganyisye wukunje wamalamba ga
moto pakuwakoposya mumgundamo.
Mlungu wapanganyisye yakuwala
ya mapende ganyama ya Adamu
na a Hawa. Ana Mlungu
mapendega
wagajigele
kwa?



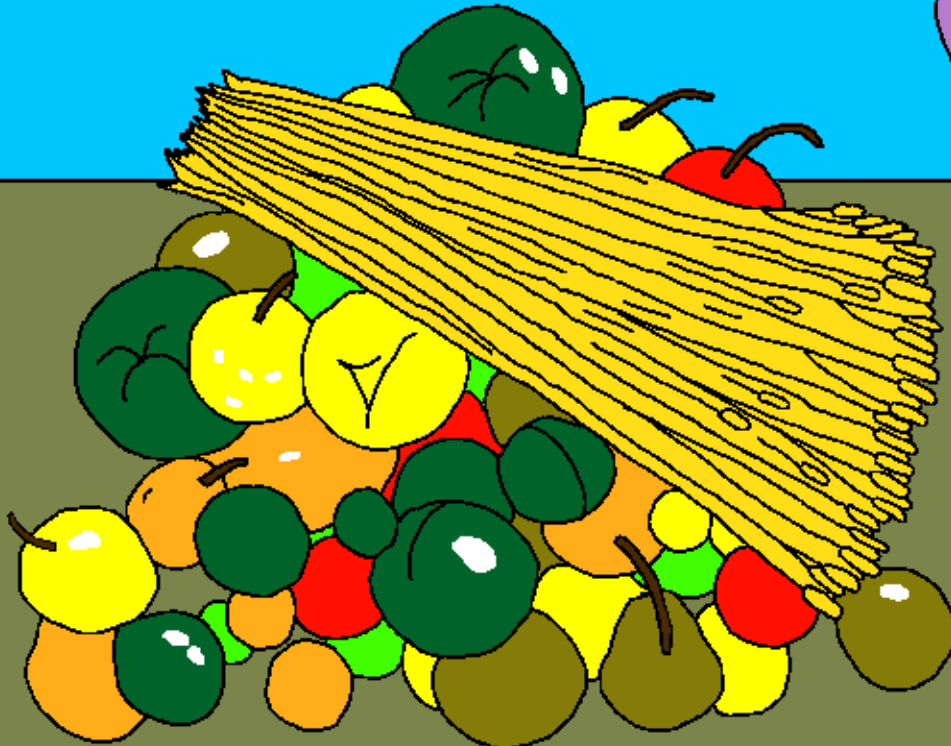
Yoyo, liwasa lyatandite pasikati pa Adamu ni a
Hawa. Mwanache jwawo jwandanda jwa mlume,
Kayini, waliji namalima. Mwanache jwawo jwawili,
jwamlume, Abele, waliji
jwakuchinga ngondolo.



Lisiku line Kayini wajigele mtuka wakwe way a kumigunda kwa Mlungu. Abele wajigele ngondolo syambone mnope mpela mtuka kwa Mlungu. Mlungu wasangalele ni mtuka wa Abele.



Mlungu nganasengwa kose ni mtuka wa Kayini. Kayini watumbile mnope. Nambo Mlungu watite, "Ana mlitesile yindu yambone, ngasimpocheledwa nomwe wakwe?"



Lutumbile Iya Kayini
nganilutyoka kose. Palipapite
ndawi wamputile Abele mpaka
kumbulaga!



Mlungu wawechete kwa Kayini. "Mpwenu alikwapi, Abele?" "Ngingumanyilila," Kayini wa lambwisye. "Ana une ndi mlonda jwa mpwanga?" Mlungu wa mpele Kaiyini chilango pakumtyochesya wukomboli wa unamchilima nikuwa jwakwambaga kwenda jenda.



Kayini watosile pameso pa a
MBUJE. Walombele mwanache
jwamkongwe jwa Adamu ni a
Hawa. Wakwete liwasa.



Mwangapita ndawi, yisukulu ni
yisukulu ya Kayini yatupene mpaka
gumbasya musu wuwawutandisye.



Pajele ndawiji liwasa Iya Adamu ni a
Hawa lyakusile mwachitema. Masiku
gelega watamaga wumi welewu
kupunda lelo.



Ndawi jele mwanache jwawo Seti piwapali, a Hawa watite, "Mlungu ambele Seti kwichisya pa Abele."



Seti waliji wakogopa Mlungu ni
watemi wumi yaka machila msano
kwisa mcheche kwisa likumi nigawili
ni wakwete wanache wachajinji.



Pachilambo, wandu waliji wakulemwa
mwakuti lukosyo ni lukosyo wagambaga
kupelengana kulemwa. Pambesi
pakwe, Mlungu waganisye
kujonanga mtundu
wa mundu ni ...



... yinyama ni ijuni. Mlungu wadandawile kuti wapanganyisye mundu. Nambo mundu jumo wasangalesye Mlungu ...



Mundu jweleju waliji Nowa.
Jwalukosye Iwa Seti, Nowa
waliji jwakulupichika soni
jwangali chipasipasi.
Wajesile ni mlungu.



Jwalakwe soni wajiganisye wanache wakwe
watatu kumpikanila Mlungu. Sambano Mlungu
walinganisye yakumkamulisya
Nowa masengo
gapadeladelape.



Kutanda kwa yisawusyo ya mundu

Ndano jakutyochela M'malowe ga Mlungu,
Bayibulo,

jikusimanikwa mu

Ndandililo 3-6

"Chipata cha malowe gawochikusapeleka
lilanguka." Sabuli 119:130



Pambesi



Ngani sya mbayibulo si sikutusalila ya Mlungu jwetu jwakusimonjesya juwatupanganyisyewe soni jwakusaka kuti mmwe mummanyeye.

Mlungu akumanyilila kuti tutesile yakusakala yakusatendaga sambi. Chilango chasambi ni chiwa, nambo Mlungu akusa mnonyelaga kwakuti watumisye mwanache gwakwe jumpepe, Yesu, kukuwa pa msalaba nikupochela chilango ligongo lyasambi syenu. Ni Yesu wajimwiche kuwawe niwapite kumangwawo kwini. Naga mkukulupilila mwa Yesu nikumwenda jwalakwejo kuti amkululuchile sambi syenu, tachitenda yalakweyo. Tayiche kutama nomwe sambano nimwesoni timchiwa mwajwalakwejo mpaka kalakala.

Naga mkukulupililaga kuti achi
chili chakuwona, wechetani ayi kwa Mlungu:
Wakunonyelwa Yesu, ngukulupilila kuti kwele ali Mlungu ni wawele mundu kuti awile sambi syetu, soni sambano ali chijumi. Chonde ayiche muwumi wangu nikungululuchila sambi syangu kuti myoyo mpaka ngole soni wumi wasambano, mkuti lisiku line singawe niwalakwe kundawi syosope. Angamuchisye kuti nakulupilileje wawo nikuwa ni wawo mpela mwana gwawo. Ami.

Walanjeje Bayibulo nikuwecheta ni Mlungu lisiku nilisiku! Yohane 3:16

