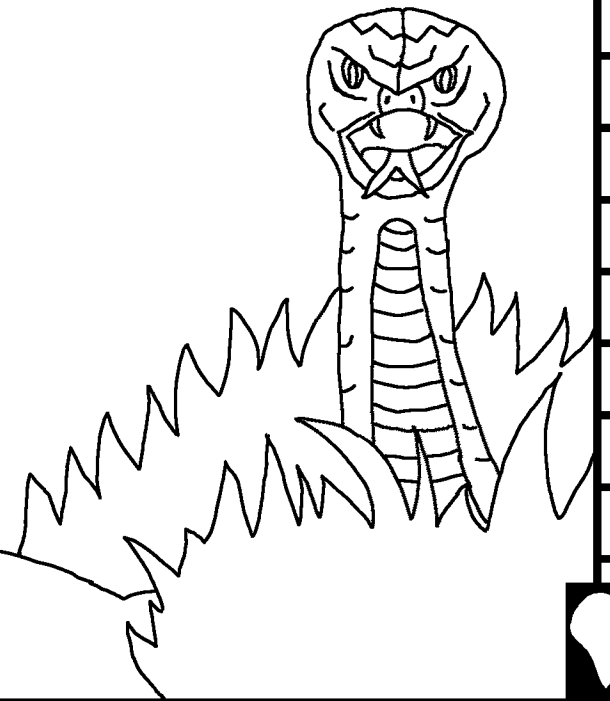


Hashihthü shing laihing
Hunyeih

Hangkulei
Mongmang
Chongpangpü



Nyangbü: Edward Hughes
Lajei lingbü: Byron Unger; Lazarus; Alastair P.
Sheteiphenei lingbü: M. Maillot; Tammy S.
Lepbü: Master Clement Bujem
Ngaibü: Bible for Children
www.M1914.org


BFC
PO Box 3
Winnipeg, MB R3C 2G1
Canada

©2021 Bible for Children, Inc.
Nüangi neyuphei keyü hapa lai lingei nevaijü ngümei ngaihen aok.



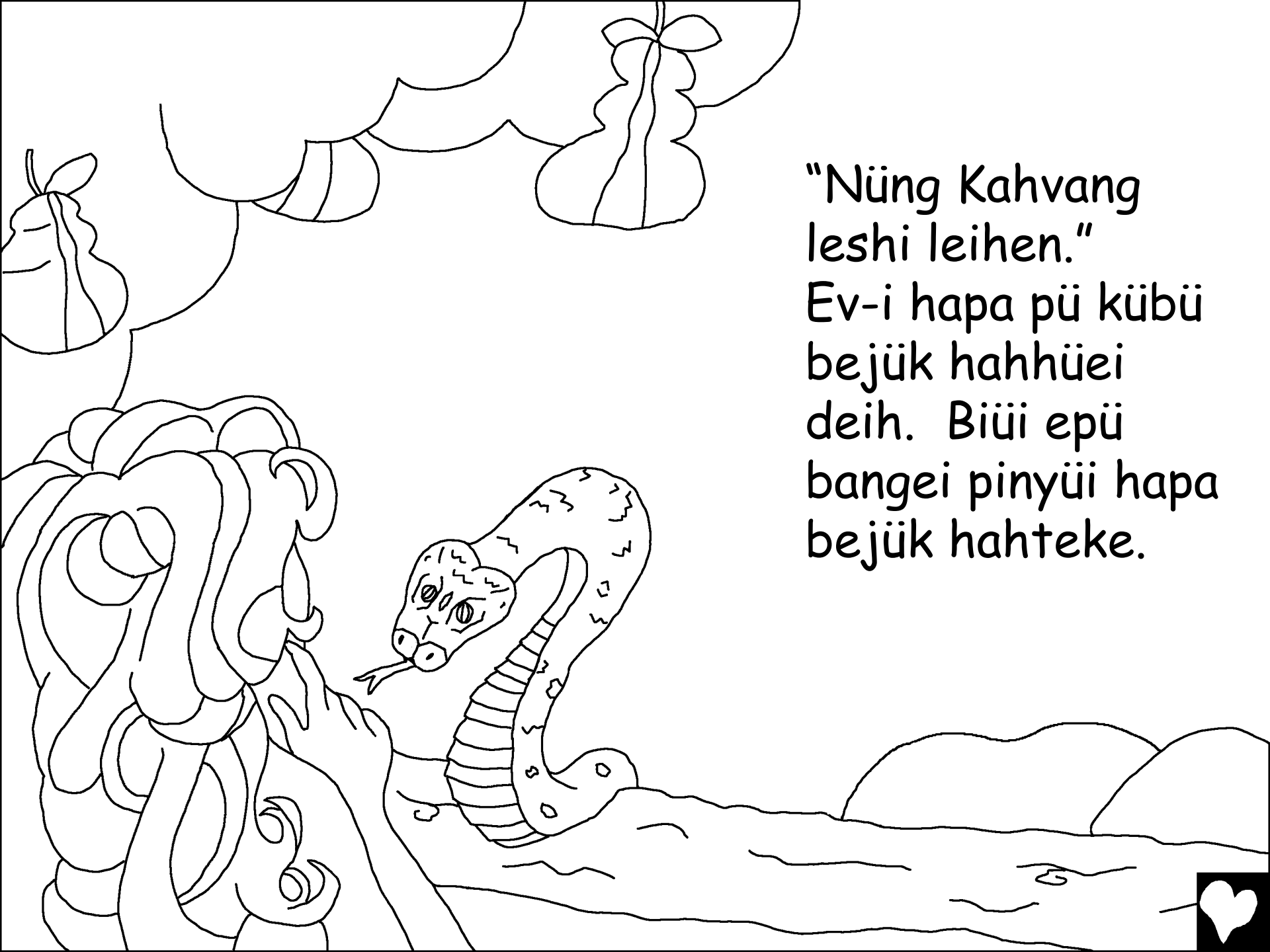
KAHVANGI LEMPHÜLI
LINGTEKE! Mechem Kahvangi
shongpü shennyak Adam lingpa,
büpa chenyüha Ev mü Eden pemongei
mongongshi nyu. Kahvang
jiji mü nyupü kü mongongei
Kahvangei ven danei
nyih hük ...





Biü peiyei Ev
kü, "Pü peü kübü
meheyao nehahhen
Kahvangi anji kü
ephopü je?" shei pheteke. "Pü hük mü
lenei pü peü kübü hah-aokhen ephopeih.
Hami hapa pü kübü hahjü
nevaijü laki hongjü dihen
shei ephopeih" shei e.
"Nüing nedipih" shei
biüi jangei eteke.





“Nüing Kahvang
leshi leihen.”
Ev-i hapa pü kübü
bejük hahhüei
deih. Biüi epü
bangei pinyüi hapa
bejük hahteke.



Ev-i Kahvangei shah nebangi
hahphei kü pinyüi Adamao
hapa pü bejük hahhen
hanteke. Adami, "Anyoh!
Ngei Kahvangei shah
nebangi nenyupih"
shei ehen
vaipeih.



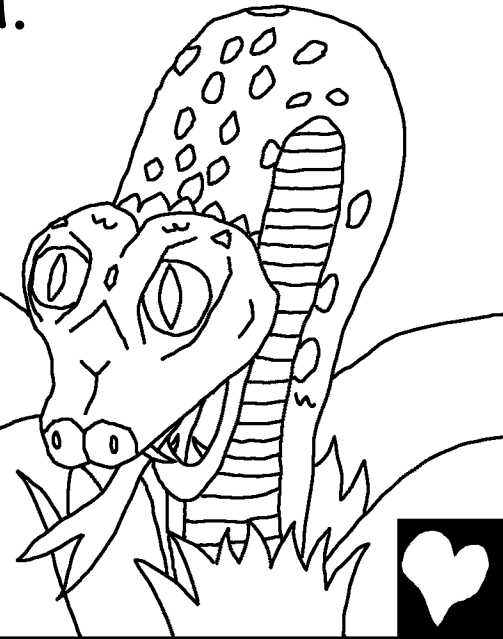


Mechem Adam hi Ev nyi mang
thahpa, jijipheni bümkong nyüke shei
nying. Phenlak bhagei büm kü küptü
Kahvang kü joei phenha mongei uoshi nyu.



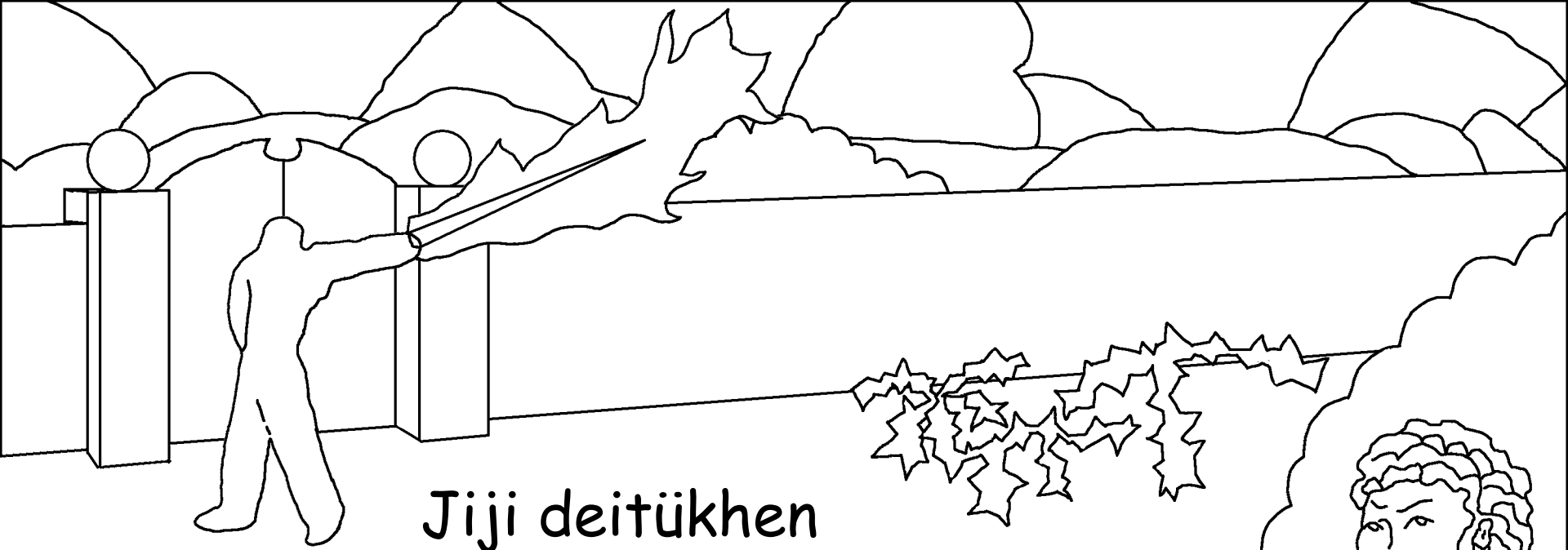
Wohongpü om hepak kü Kahvang pemongei pei. Adam hi Ev nyi-i mehe dük ha büpai nyingdaitü nyu. Adami Ev nyonghü. Ev-i biü nyonghü. Kahvangi, "Biü kü thaüvaü hettuh. Nyühai näü angshing kü hanghihen" shei eteke. "Adam, nüangi mang thahpü nangkü kahdokao hühhihang vamhüei thaüvaütüknyeih. Nüangi hahying danghen

shingvaishi
lem-ow yenei
dükjü mon
hahhen danghen."



Kahvangi Adam hatü Ev
nyi thamapü pemong leipü
changtük. Jiji mang thahpü
nangkü yangnyu
shuohpü
Kahvang
toueipü
yandai.

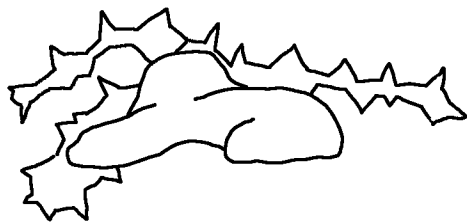




Jiji deitükhen
shingvaishi

Kahvangi nyeleppü yanlu hük ling.
Kahvangi jiji kü phaishuw yah-ei
bhagthuh thingteke.

Kahvangi
meleipü
phaishuw
yahpa?



Hepak jüüpü kü Kahvangi Adam hi Ev nyi shemmong
hük leiteke. Jijilei hashongpa Kainü kahling am nyu.
Jijilei näü-eepa Abelü mi yombü nyuteke. Nyih hük

Kaini Kahvang kü thintho shuohhen
hahying maani koei pei. Abeli

Kahvang kü büpalei

thintho Kahvang

kü peü mü

meipü mi koei pei.

Kahvangi Abeli

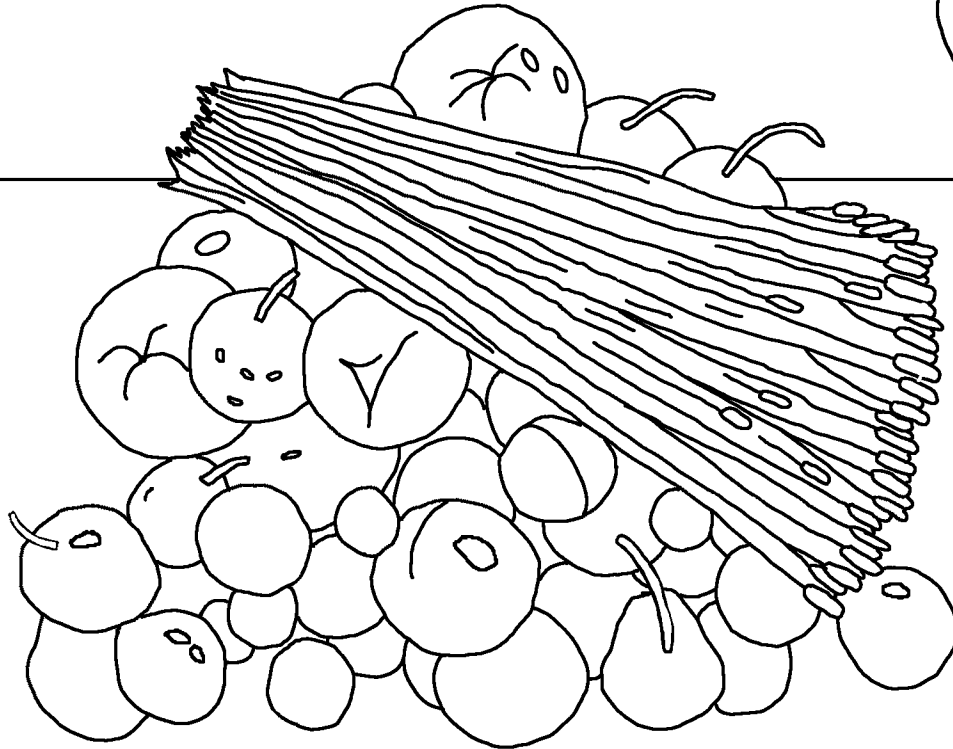
shuohpü thintho

kü

mongong.



Kahvangi Kaini shuohpü
thintho kü mongneong. Kain
longi mongshih. Shejao Kahvangi,
"Nüangi jüüpü düklangmeyü nüngei
thintho-ao neyahhen je?" shei
eteke.



Kain mongshihpü nedohdai.
Hepak maani angphei kü
kahlei Kaini Abel kü üpteke
hatü büpa jütük.



Kahvangi Kain kü, "Anaü Abel melei nyüpa?" shei phe. "Ngei nenyng" shei Kaini shahshem eteke. "Ngeiyü ngelei näüpeü yombü je?" Kahvangi büpa kü kah linghen neshuoh-i shing nenüngi nyaiteihen laphen shuoh-ei hanghihüteke.



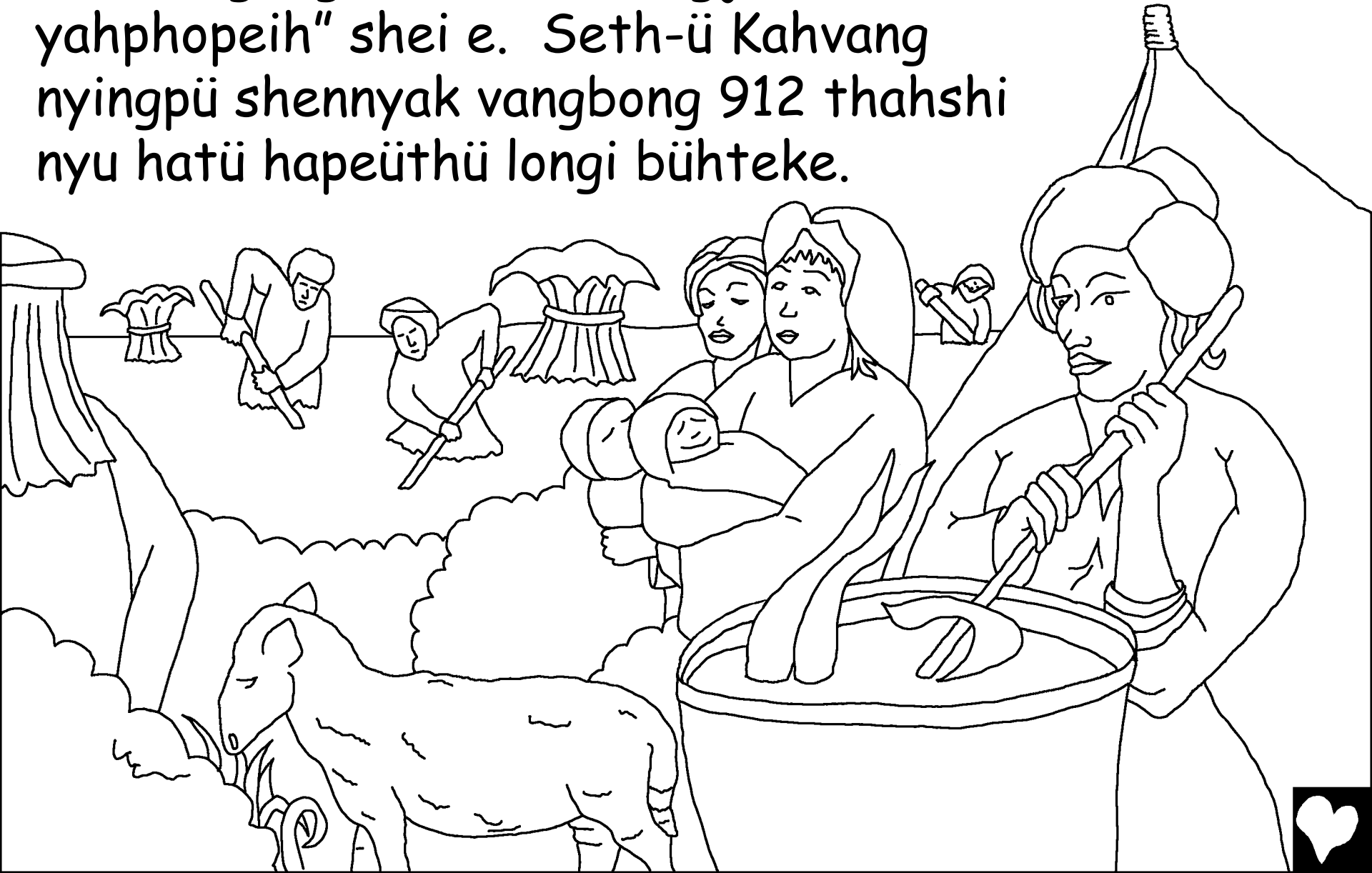
Kain Kahvang toueipü lü dai. Büpai Adam
hi Ev nyilei yükha mü shem yemteke.
Jiji nyi-i shemmong lingei nyu. Lomi
Kainei hüpeü hatü hüshomthüi büpai
lingpü chingnyü mateke.



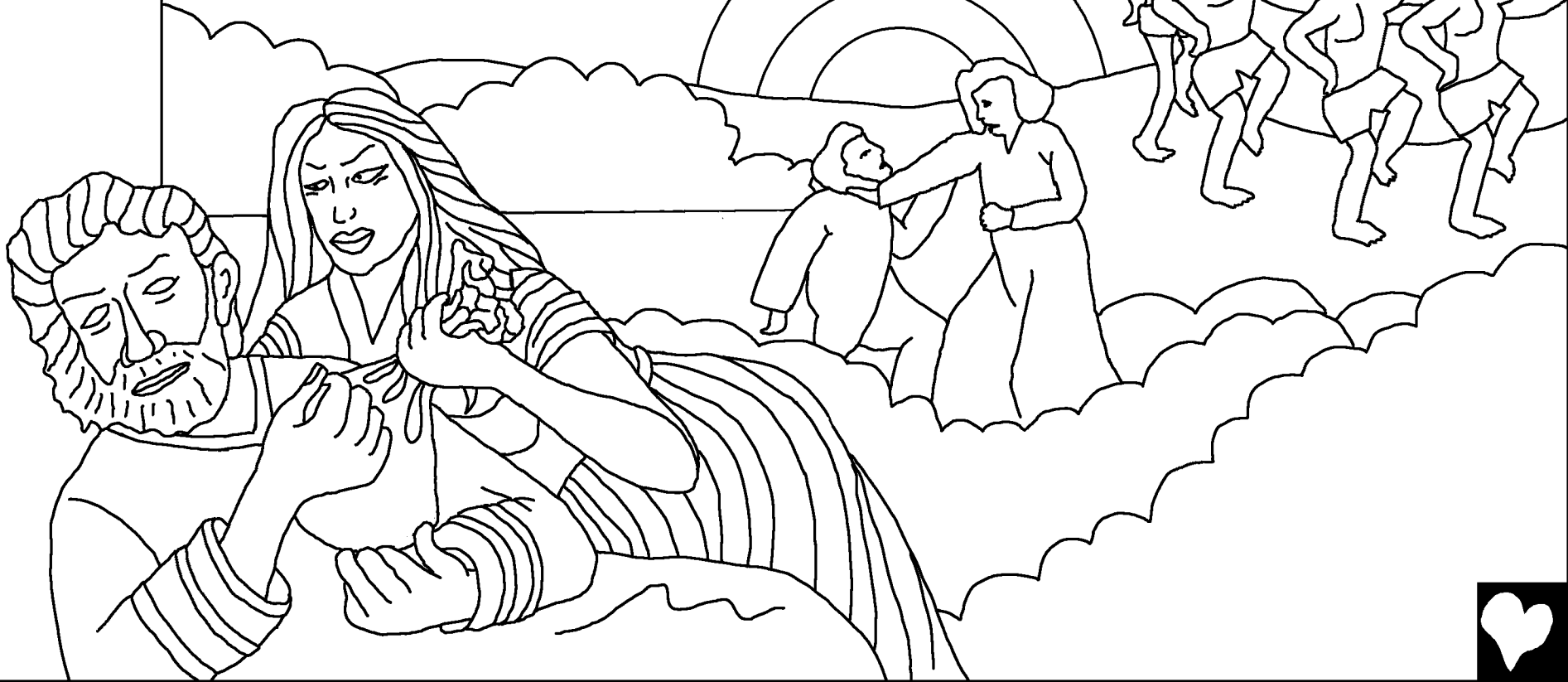
Hahepak kü Adam hi Ev nyilei
hapeüthü lomi dateke. Hathü nyih
keyü shennyakthü shaangpü meyü
den luangi nyuteke.



Mechem pinyüi cheha Seth bühpa, Ev-i,
"Kahvangi ngei kü Abel nangjei Seth
yahphopeih" shei e. Seth-ü Kahvang
nyingpü shennyak vangbong 912 thahshi
nyu hatü hapeüthü longi bühteke.



Denshem hük kübü hük shei
daishing kü hangkuthü nyeinya
nyeinya nemeipüba leiteke.
Shomshi Kahvangi hangkuthü
mahtükhen shingvaishi
temteke.



... Yemhimak hatü outhü ling ...
Kahvangi shennyak lingpü nangkü
mongmangei deih. Shennyak
hük homei Kahvang
mongmeihüteke.



Hapa shennyakü Noah
nyuteke. Noahlei hapeü
Seth-ü eela neshiü
daülangi nyuteke.
Büpa Kahvang
mü kam.



Büpai hapeüthü jom jem
kü Kahvangei ven banghen
nyuhteke. Shaang Kahvangi
Noah-ü hayaoha noteihen
shingvaishi küpjan
temteke.



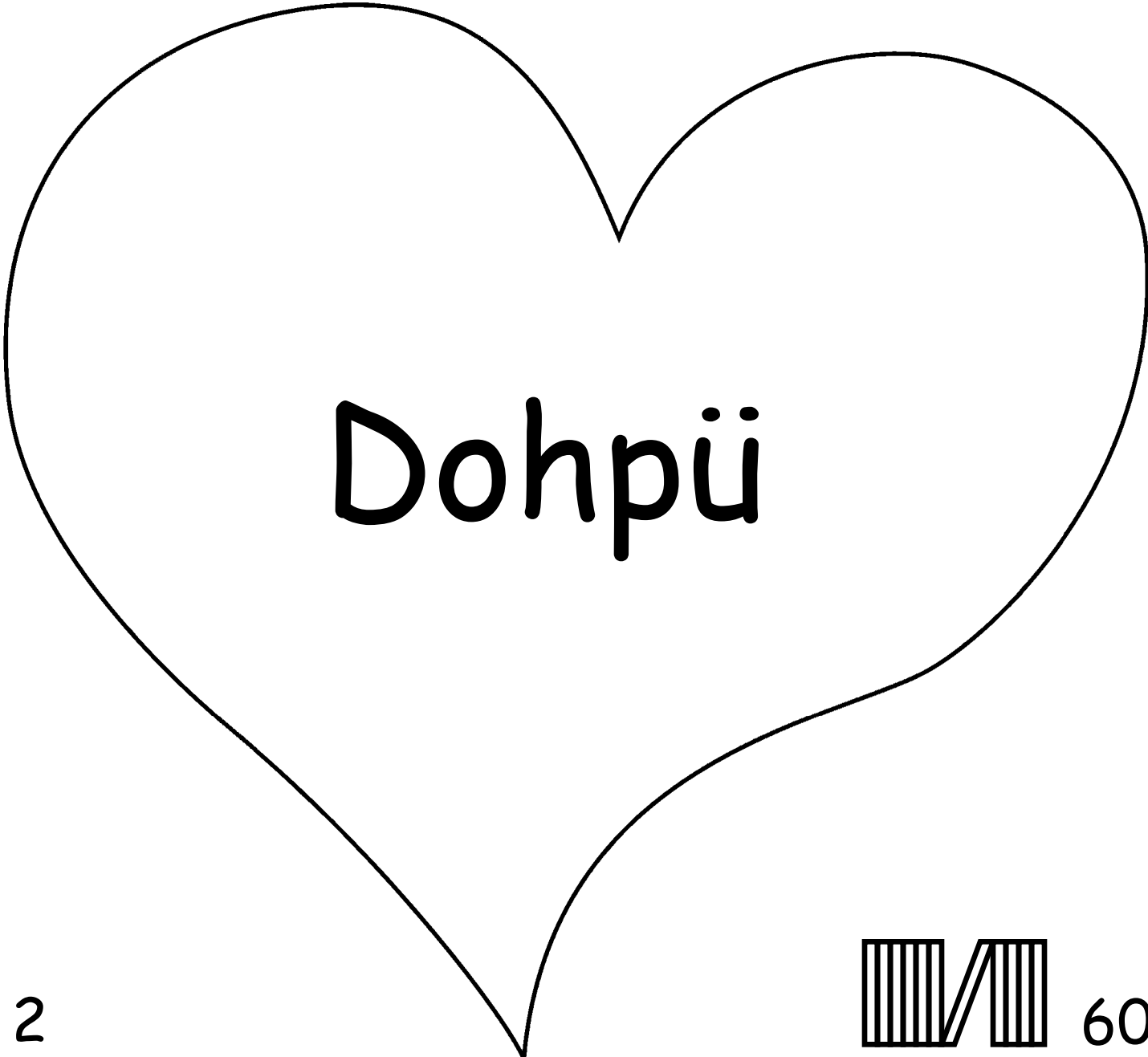
Hangkulei Mongmang Chongpangpü
Kahvangei Shah Laihing leipü büshah

Dangnyeih

Kahbhao 3-6

“Nüingei Shah shühahpai vangngai shuohnyeih.”
Menvih Kesho 119:130





Dohpü



2



60



Hapa Laihing büshah homei jenei thamapü Kahvang üpai jen ling hatü nüngi büpa nyinghen nanyüpa hapa jung halei enyüke.

Jeni dao nemeipü dükteke shei Kahvangi nyingei nyüke hatü büpai hapa kü mang shei nyüknyüke. Mang shing hanghiyü dipü nyüke, shejao Kahvangi nüng kü longi bampü nangkü büpai laophülei Ha Jisu nüngei mang shing hanghiyei shophang kü dihen shomteke. Jisu ditü yangei leiyei vangsho lei aongdai! Nüngi Jisu kü hinglemei nüngi büpa kü mang lahjema büpai mang tükphahen. Büpa peiyei nüngei mongei nyuhen hatü nüng düngei büpa mü nyuhen.

Nüngi hapayü shahhing hih shei hinglemjema, hayü Kahvang kü eyeishuoh: Bampü Jisu, nüngü Kahvang shei ngei hinglemnyeih, hatü ngelei mang shing dihen nüng shennyak leiteke hatü nüng shaang yemmü nyüke. Ngelei yangnyu kü nüng peikei hatü ngelei mang tükshih, shejüang ngei shaang yangnyu ja leihen, hatü nyih hük ngei den kü nüng mü nyuhen shingvaishi ngei daihen.

Nüngei ha leshi nüngei ven bangei nüng shing nyuhen sheühshihma. Amen.

Laihing ietuh hatü nyihjeih Kahvang mü shah eteituh. Johan 3:16

